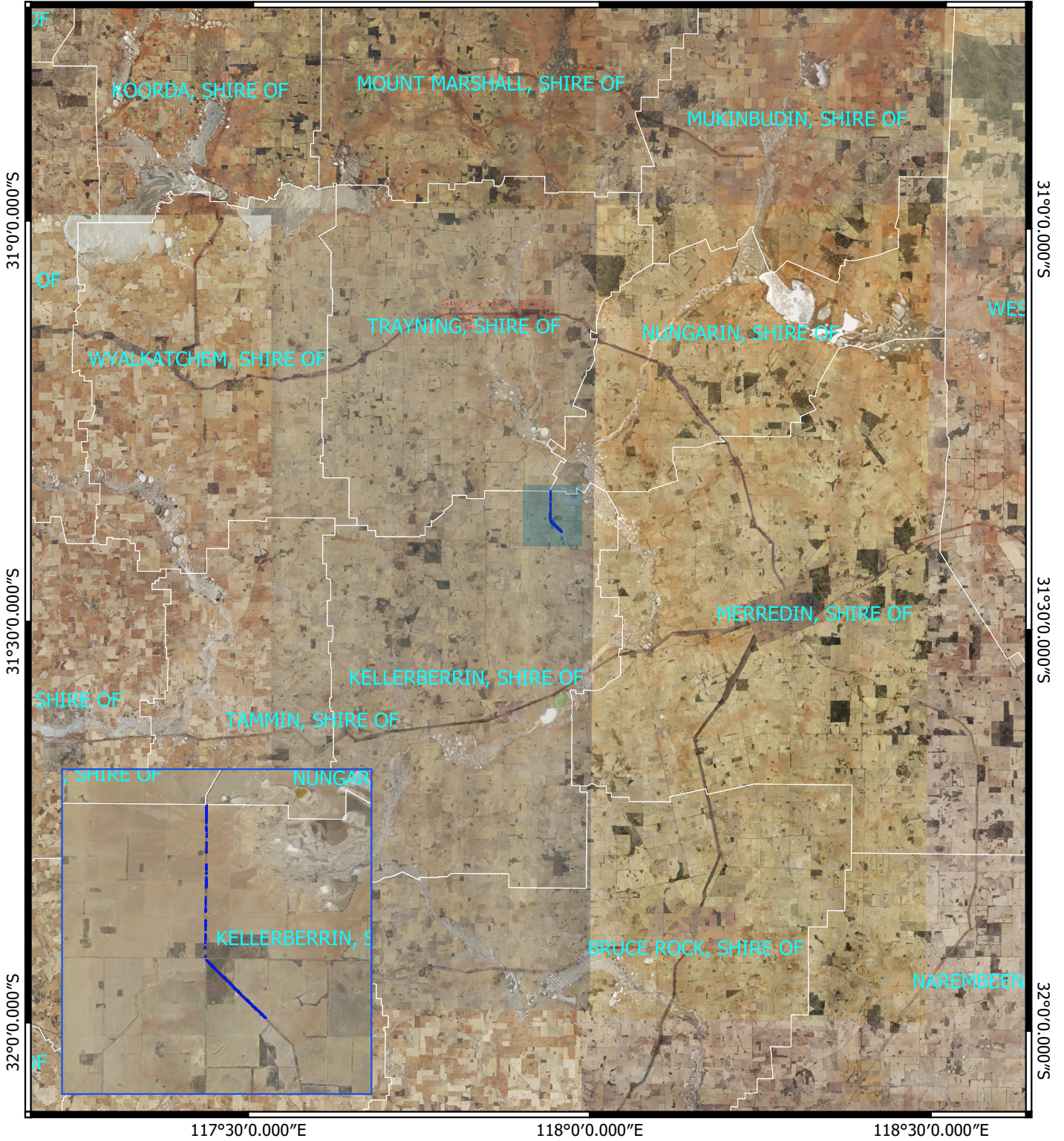


# CPS 8590/1 - Context Map


117°30'0.000"E

118°0'0.000"E

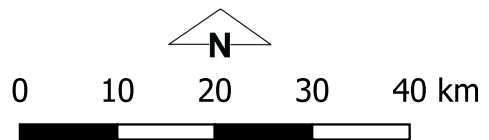
118°30'0.000"E



## Legend

-  CPS Areas Applied to Clear Local Government Authorities

## Image



Officer delegated under section 20 of the Environmental Protection Act 1986



GOVERNMENT OF WESTERN AUSTRALIA