

# CPS 8590/1 - Overview Map

117°54'0.000"E

117°55'30.000"E

117°57'0.000"E

117°58'30.000"E

31°19'30.000"S

31°21'0.000"S

31°22'30.000"S

31°24'0.000"S

31°19'30.000"S

31°21'0.000"S

31°22'30.000"S

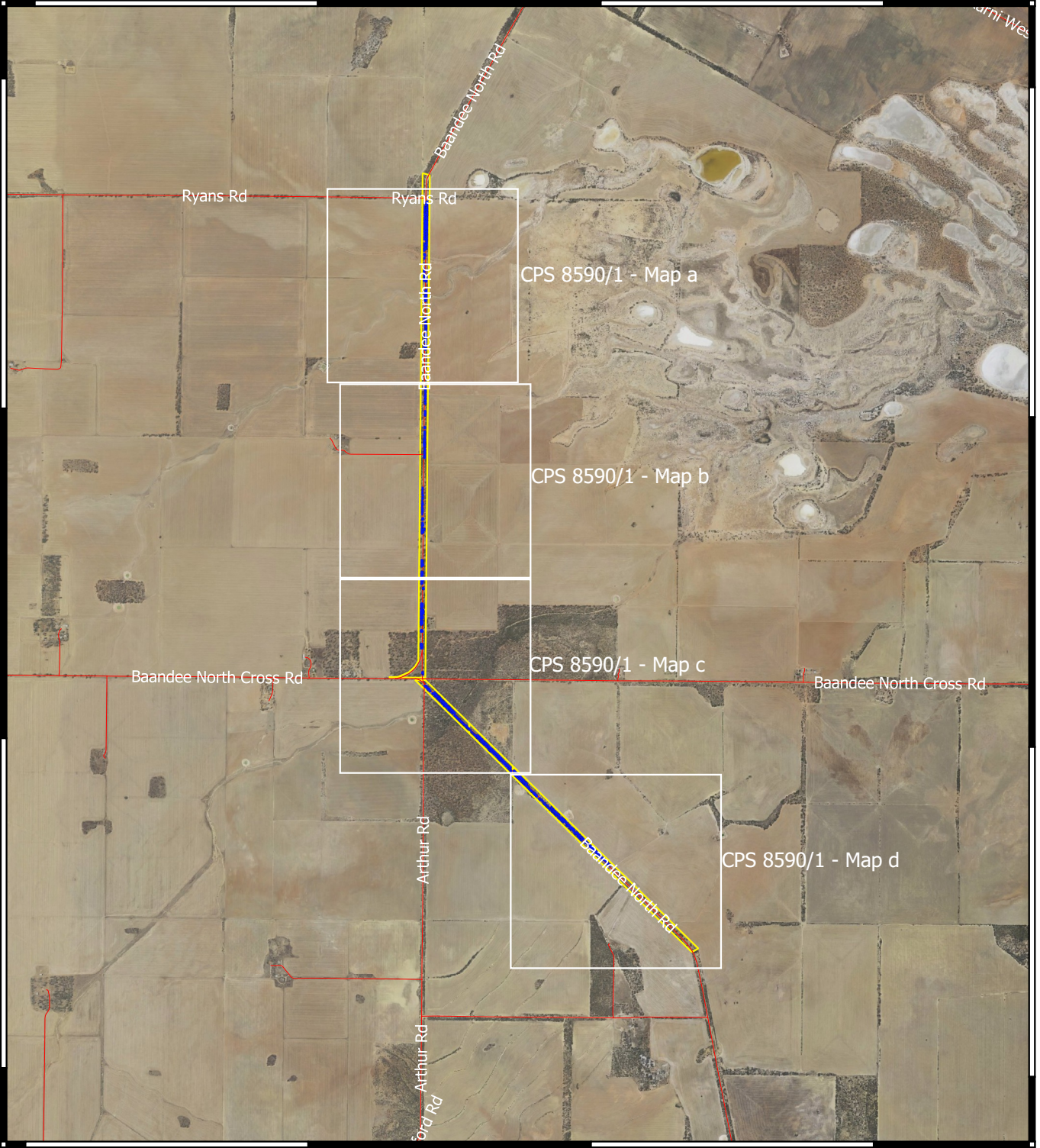
31°24'0.000"S

117°54'0.000"E

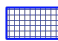


117°55'30.000"E

117°57'0.000"E

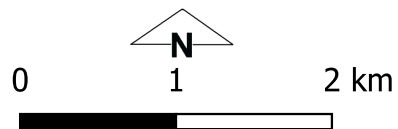
117°58'30.000"E



## Legend

-  CPS Areas Applied to Clear
-  Road Centrelines
-  Land Tenure LGATE - 226

## Image



Officer delegated under section 20 of the Environmental Protection Act 1986



GOVERNMENT OF WESTERN AUSTRALIA