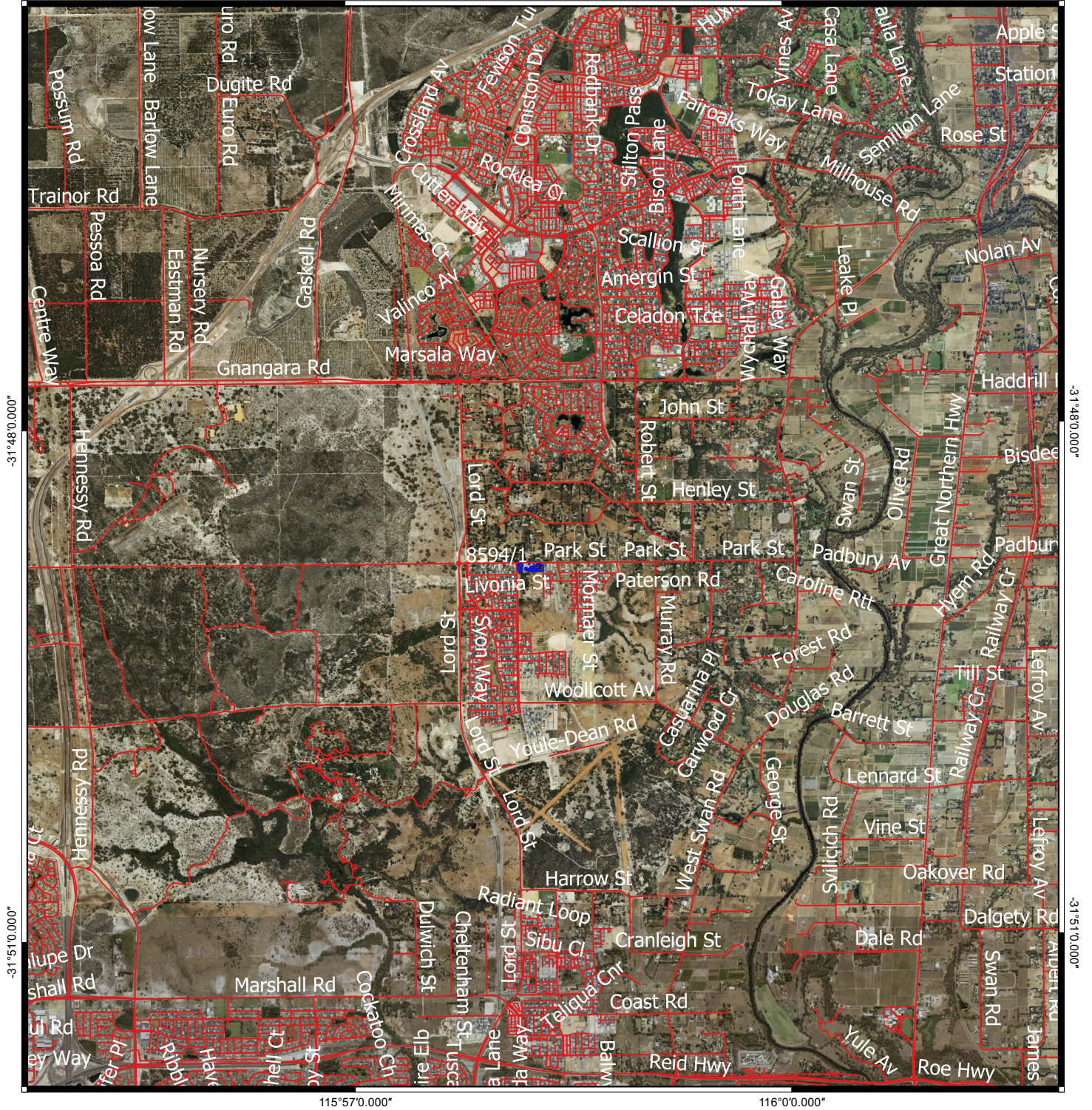


# CPS 8594/1 - Context Map

115°57'0.000"




116°0'0.000"

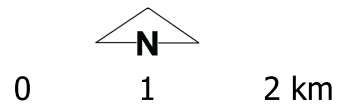


115°57'0.000"

116°0'0.000"

## Legend

-  CPS areas applied to clear
-  Local Government Authorities
-  Roads
- Image



MGA94  
Geocentric Datum of Australia 1994

Officer with delegated authority under Section 20  
of the Environmental Protection Act 1986



GOVERNMENT OF  
WESTERN AUSTRALIA  
WA Crown Copyright 2018