

- T2320 – Mechanical Works
To create a fire access track from North to South, following natural vegetation lines and existing tracks where possible, mulching/slashing/grading. Minimum standard of access road is to enable use by (heavy) response vehicle with tracks to be in accordance with Shire Fire Break Notice as a minimum. WGNJLN013 / RA 10787 / T2320 MAF 2018/19 Rnd 1 (0.48 ha)
 - PHOTO 21
- ~~T2324 – Mechanical Works~~
~~To sure up existing fire access road, by mulching/grading in preparation for a prescribed burn. WGNJLN013 / RA 10787 / T2324 MAF 2018/19 Rnd 1 (0.49 ha)~~
NOTE: Recent site visit has determined work no longer required
- T2325 – Mechanical Works
To construct fire break from north to southern boundary along eastern edge of UCL block in preparation for a prescribed burn. Break standard to be in accordance with Shire Firebreak Notice. WGNJLN013 / RA 10787 / T2325 MAF 2018/19 Rnd 1 (0.79 ha)
 - PHOTO 13 & 14
- T2327 – Mechanical Works
To create a firebreak on the south / south western side of the UCL parcel and from West to East (from approx. 100 m from south western corner) – following natural vegetation line and existing tracks were applicable, by mulching / grading and/or slashing . Break to be in accordance with the Shire Fire Break Notice as a minimum. WGNMDG077 / RA 10787 / T2327 MAF 2018/19 Rnd 1 (0.38 ha)
 - PHOTO 1 - 12
- T2318 – Prescribed Burn
 - PHOTO 1 - 12
- T2326 – Prescribed Burn
 - PHOTO 13 - 21

Photo 6

Photo 7

General point from where photos were taken

Photo 5

Photo 4

Photo 1

Photo 2

Photo 3

Photo 21

Photo 13
- 20

Photo 8 & 9

Photo 10, 11 & 12

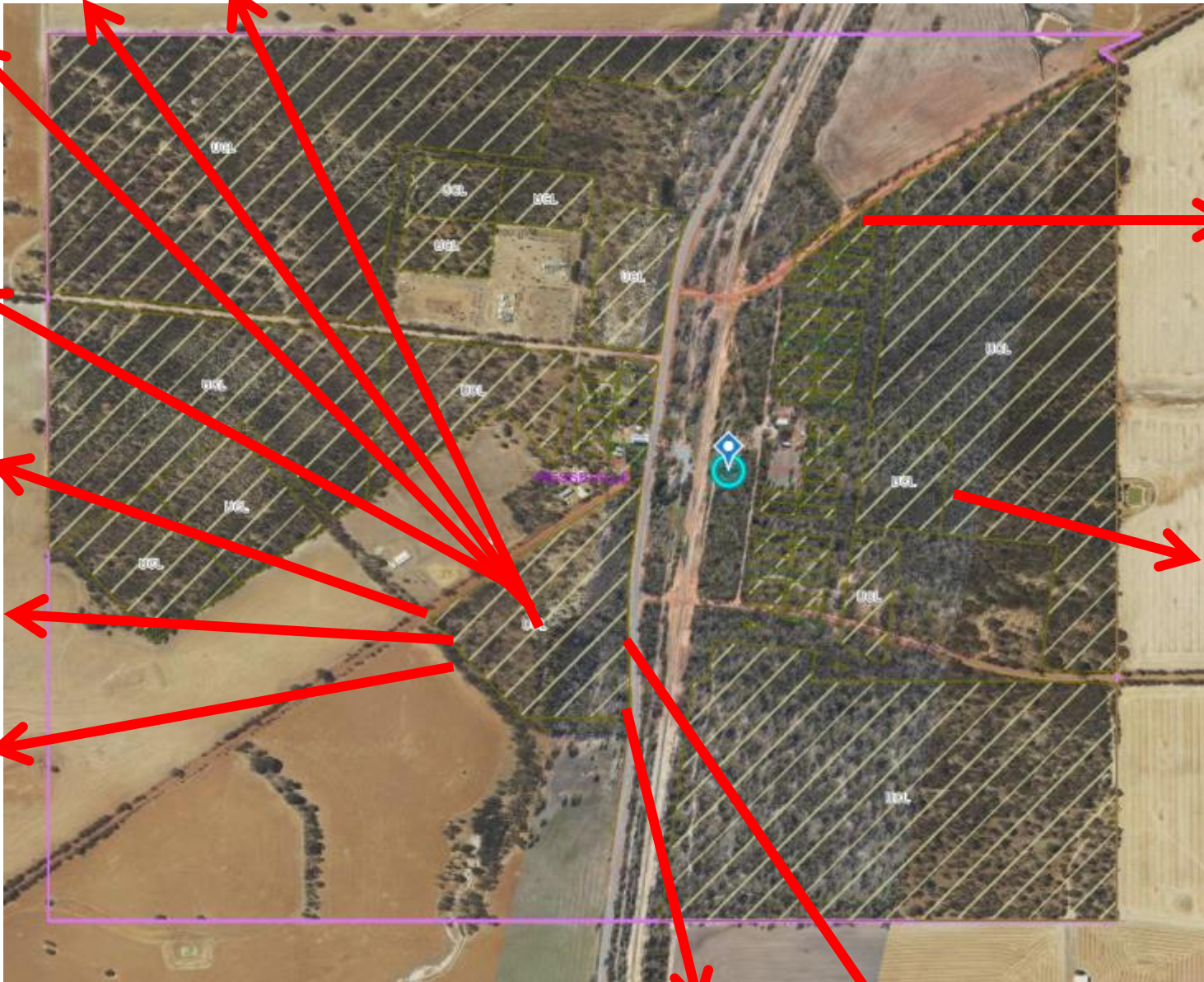






PHOTO 7



PHOTO 9



PHOTO 8



PHOTO 12



PHOTO 10



PHOTO 11



PHOTO 13

Powered by AppleCam

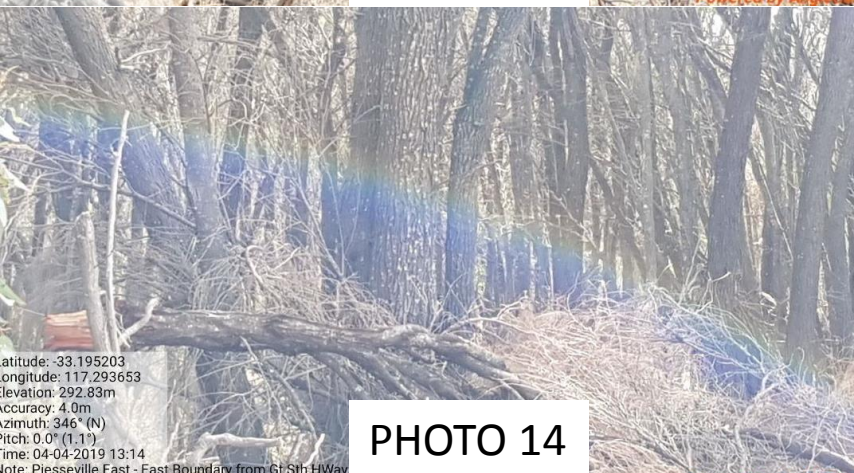


PHOTO 14

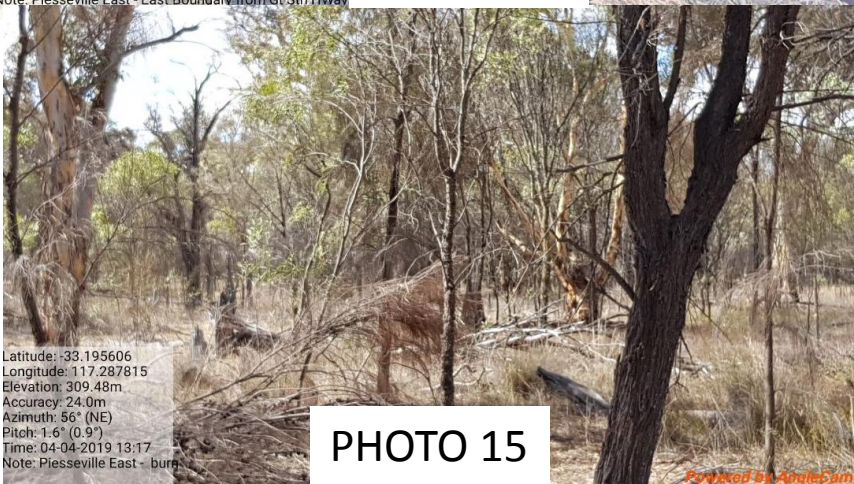


PHOTO 15

Powered by AppleCam



PHOTO 16

Powered by AppleCam



PHOTO 18

Powered by AppleCam



PHOTO 19

Powered by AppleCam



Treatment 2318 – Prescribed Burn area



Treatment 2326 – Prescribed Burn area

