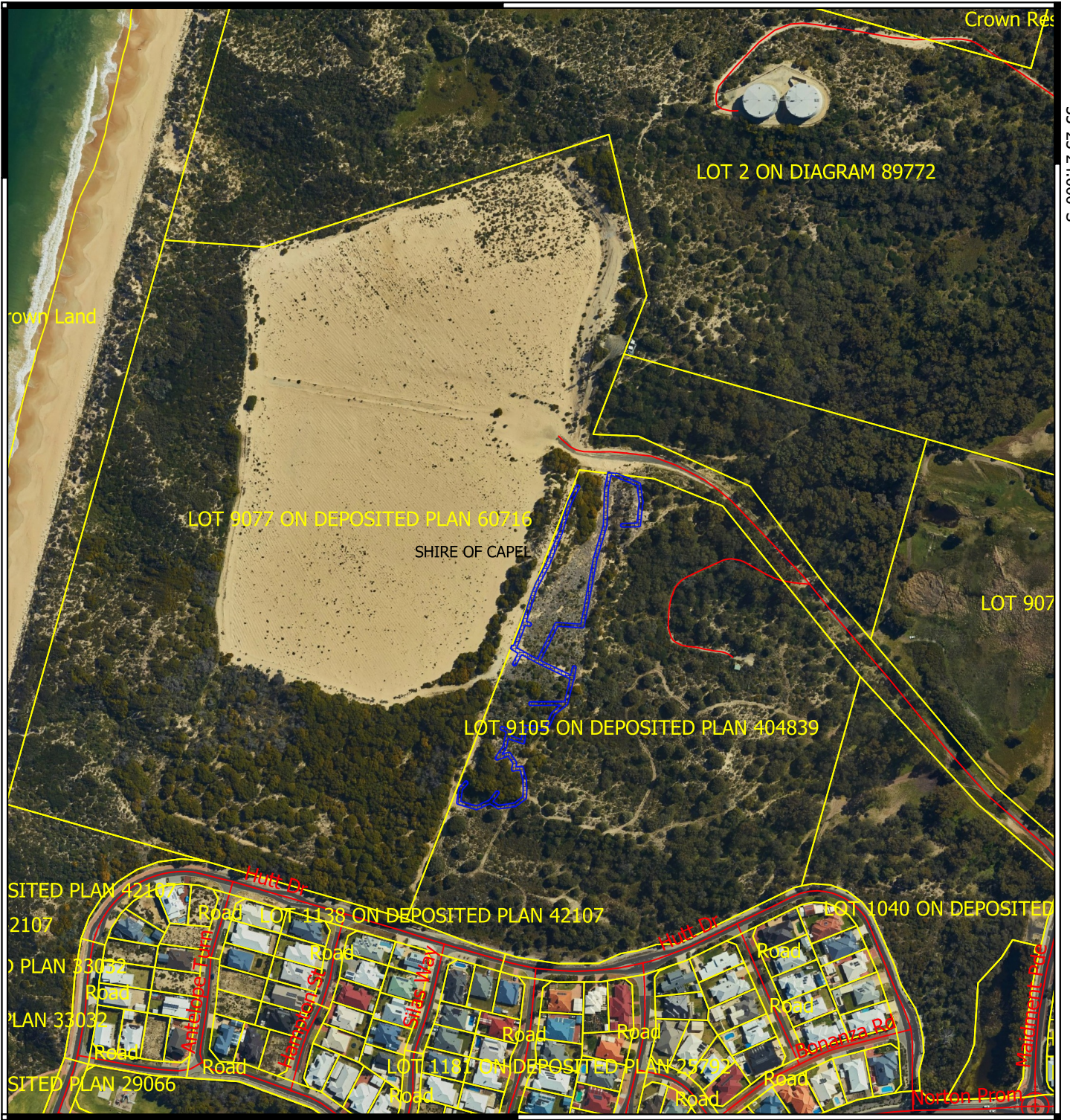


CPS 8609/1 - Map

115°36'36.000"E

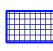



33°23'24.000"S

33°23'24.000"S



115°36'36.000"E

Legend

-  CPS areas applied to clear
-  Cadastre - LGATE 218
-  Local Government Authority
-  Road centrelines

MGA 94
Geocentric Datum of Australia 1994

0 50 100 150 200 250 m



GOVERNMENT OF
WESTERN AUSTRALIA