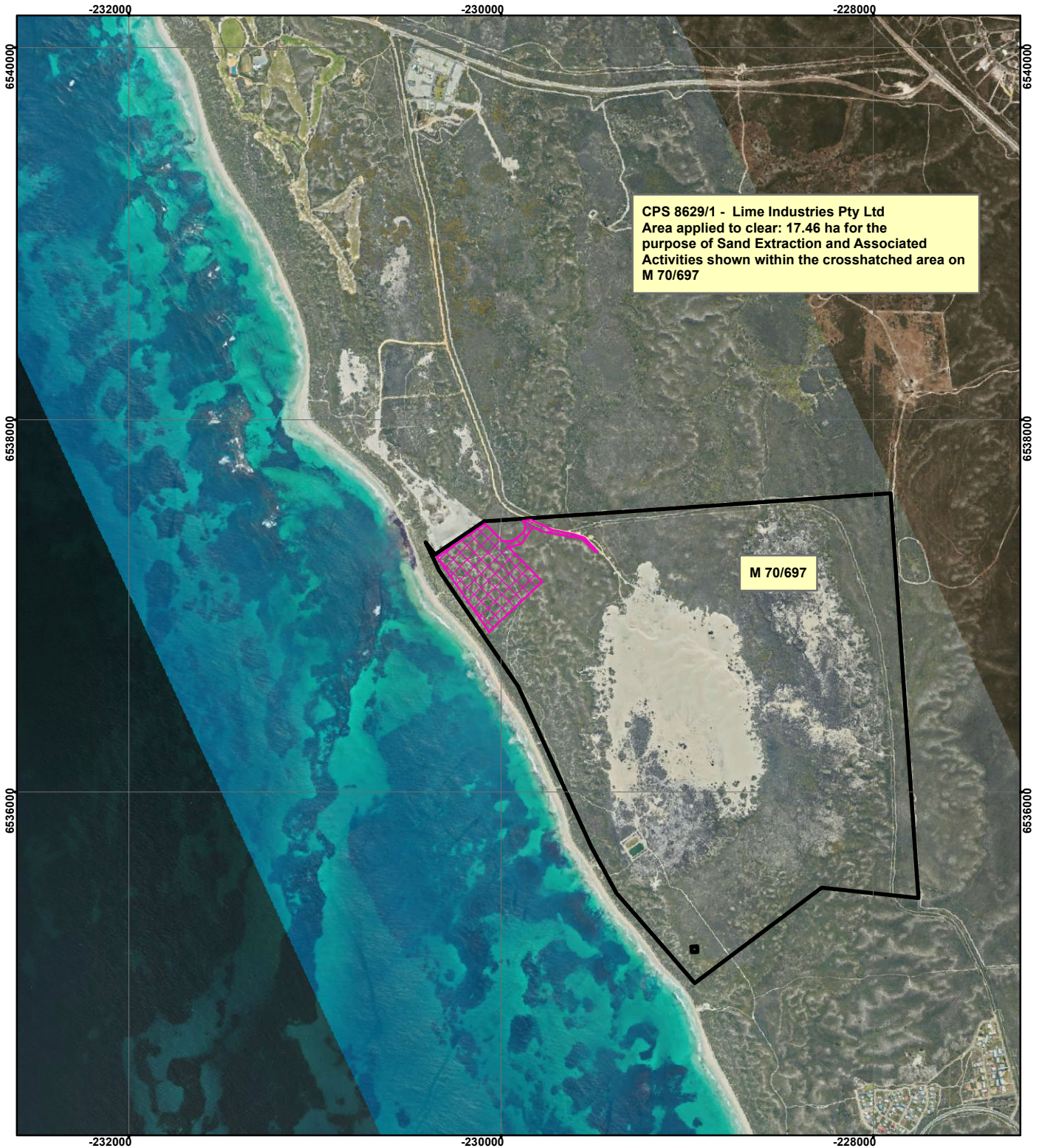




# CPS 8629/1 - Lime Industries Pty Ltd

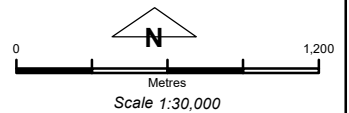


CPS 8629/1 - Lime Industries Pty Ltd  
 Area applied to clear: 17.46 ha for the  
 purpose of Sand Extraction and Associated  
 Activities shown within the crosshatched area on  
 M 70/697

M 70/697

## Legend

-  Clearing Instruments
-  Mining Tenements



Geocentric Datum Australia 1994

*Note: the data in this map have not been projected. This may result in geometric distortion or measurement inaccuracies.*

..... Date .....

Officer with delegated authority under Section 20 of the Environmental Protection Act 1986

Information derived from this map should be confirmed with the data custodian acknowledged by the agency acronym in the legend.

