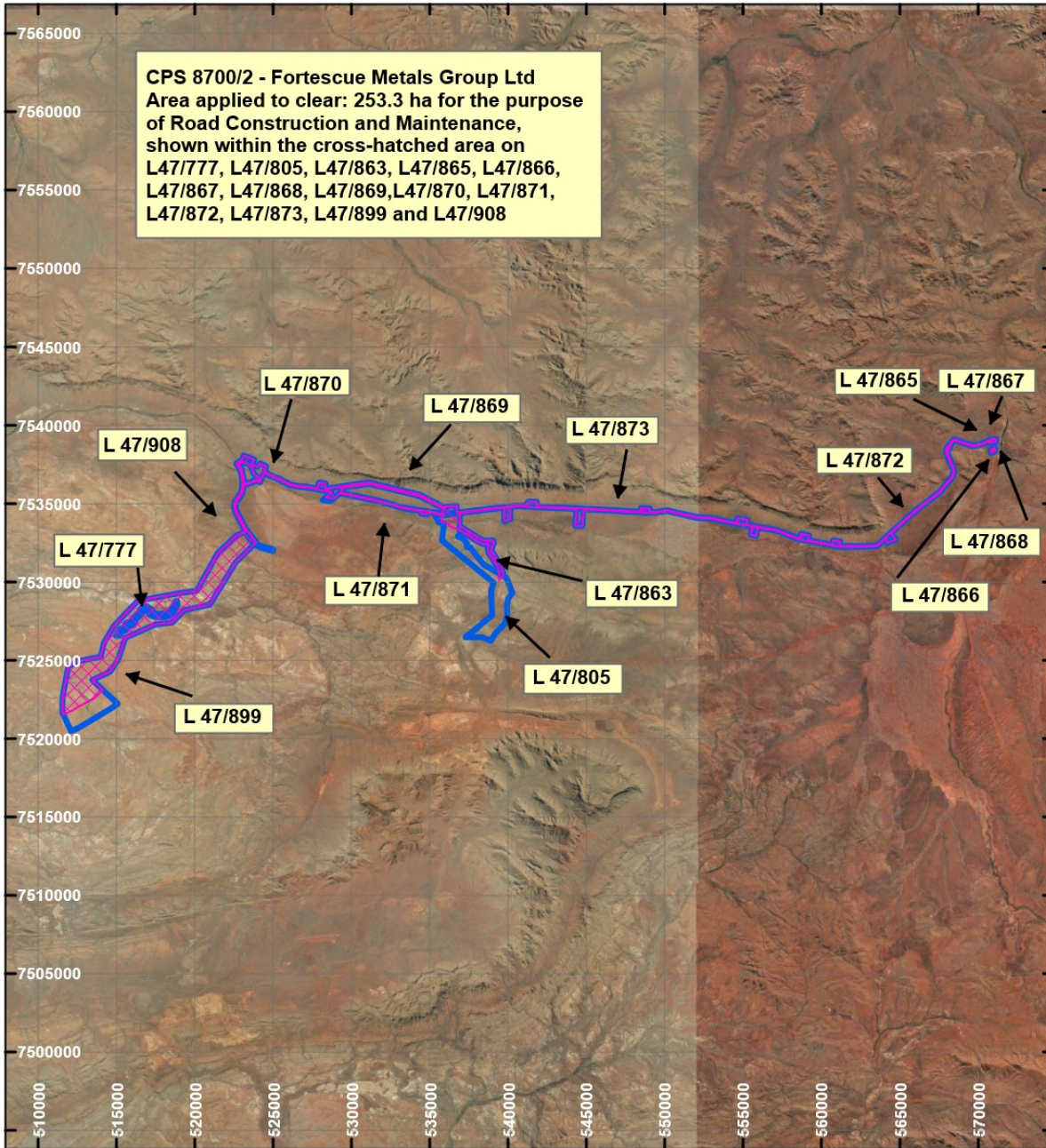


# CPS 8700/2 - Fortescue Metals Group Ltd

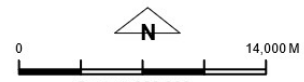


**CPS 8700/2 - Fortescue Metals Group Ltd**  
 Area applied to clear: 253.3 ha for the purpose  
 of Road Construction and Maintenance,  
 shown within the cross-hatched area on  
 L47/777, L47/805, L47/863, L47/865, L47/866,  
 L47/867, L47/868, L47/869, L47/870, L47/871,  
 L47/872, L47/873, L47/899 and L47/908

**LEGEND**

-  Clearing Instruments
-  Mining Tenements

Orthophotography sourced from Landgate



Geocentric Datum Australia 1994  
 Note: the data in this map have not been  
 projected. This may result in geometric  
 distortion or measurement inaccuracies.

..... Date .....

Officer with delegated authority under Section 20 of  
 the Environmental Protection Act 1988

Information derived from this map should be  
 confirmed with the data custodian acknowledged  
 by the agency acronym in the legend.



WA Crown Copyright 2002

