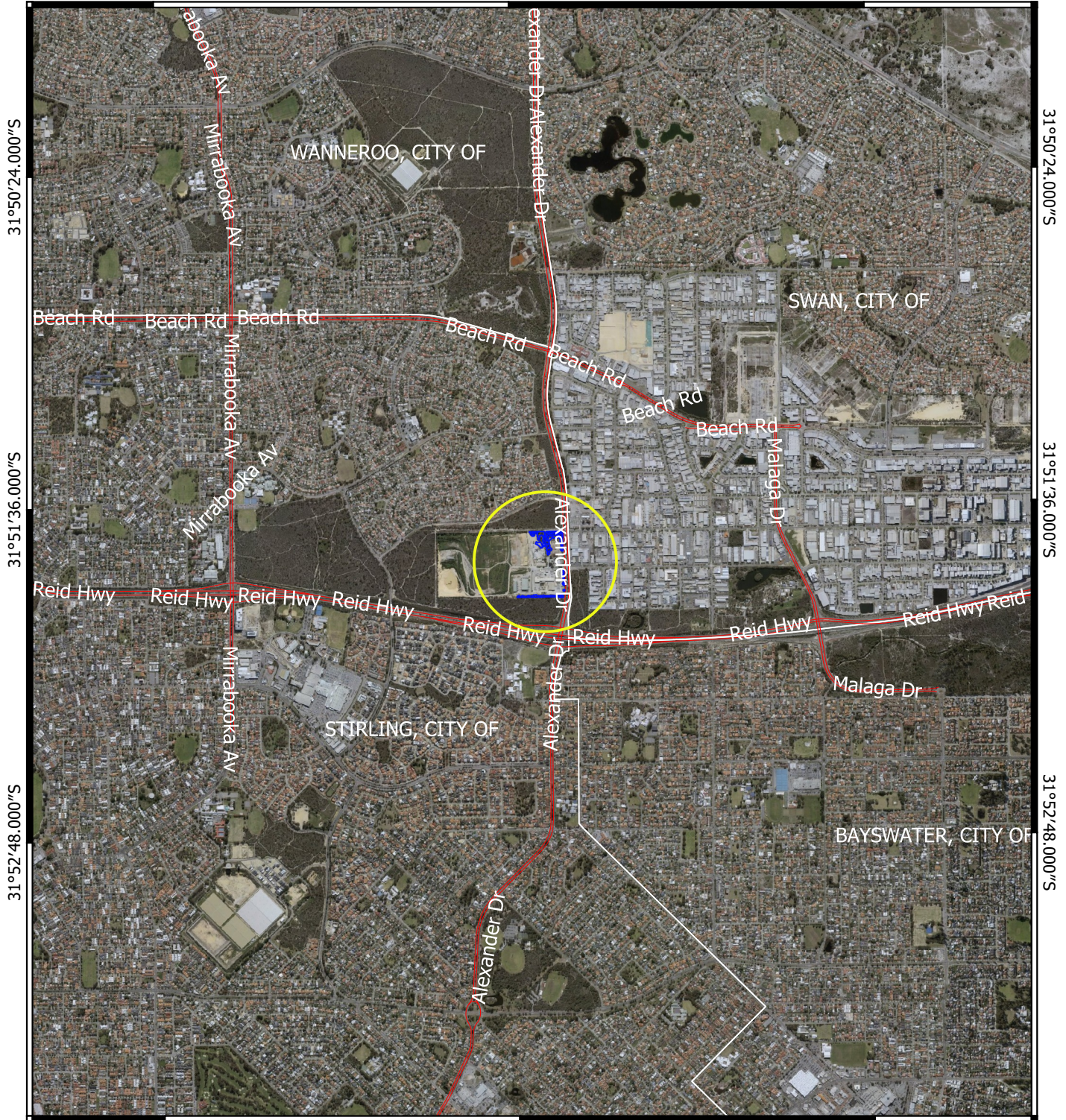


CPS 8723/1 Context Map

115°51'0.000"E

115°52'30.000"E

115°54'0.000"E


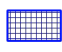




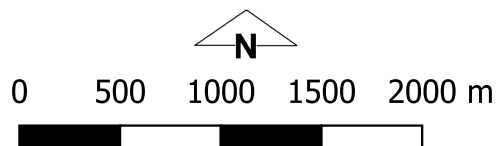
115°51'0.000"E

115°52'30.000"E

115°54'0.000"E

Legend

-  Cadastre - LGATE 218
-  CPS areas applied to clear
-  Local Government Authorities
-  Road Centrelines



Officer delegated under section 20 of the
Environmental Protection Act 1986



GOVERNMENT OF
WESTERN AUSTRALIA