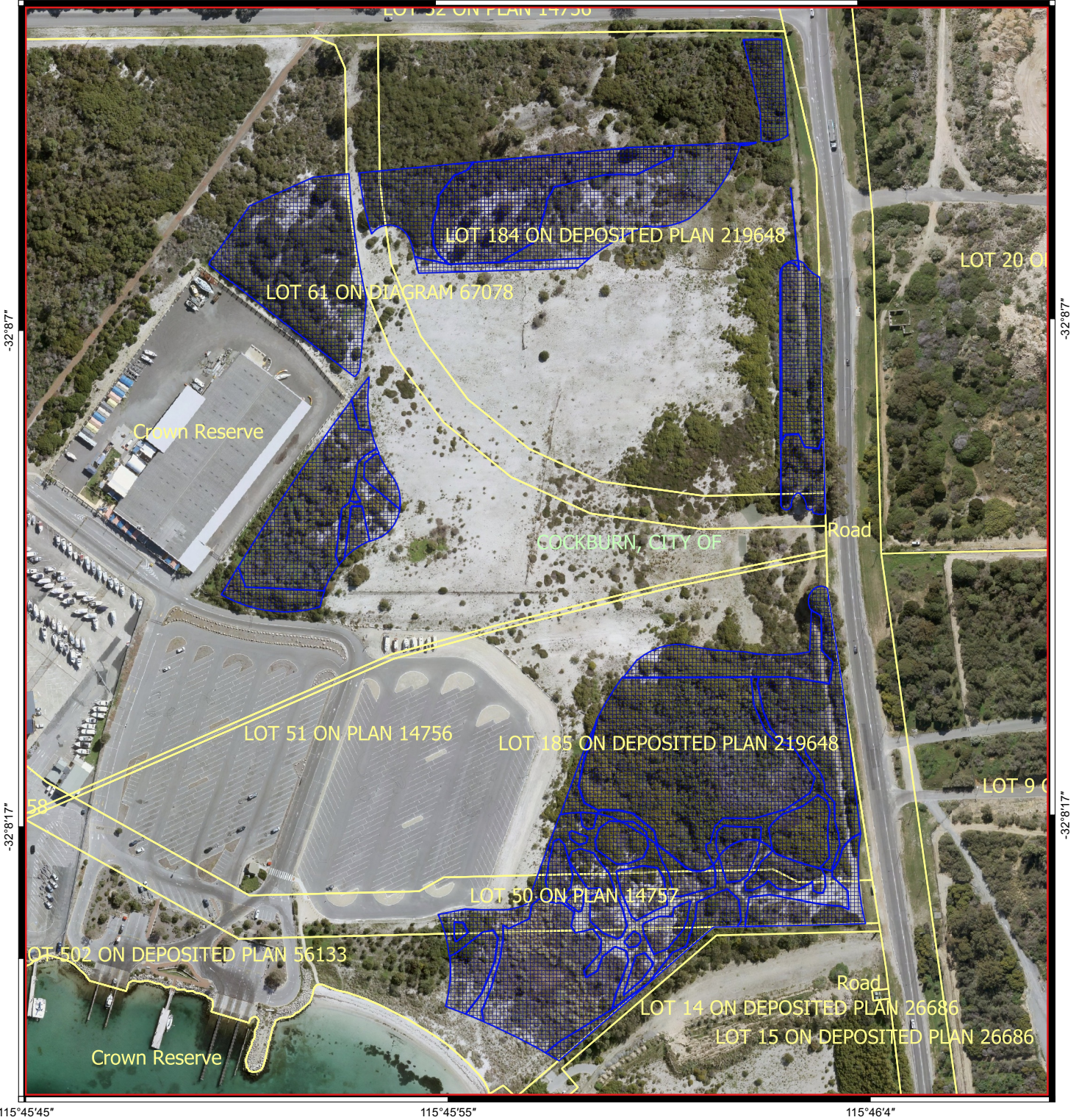


# CPS 8737/1 - Map

115°45'55"

115°46'4"



-32°8'7"

-32°8'7"

-32°8'17"

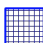


-32°8'17"

115°45'45"

115°45'55"

115°46'4"

## Legend

-  CPS areas applied to clear
-  Local Government Authorities
-  Cadastre - LGATE 218



0 50 100 150 200 m



MGA 94  
Geocentric Datum of Australia 1994



GOVERNMENT OF  
WESTERN AUSTRALIA