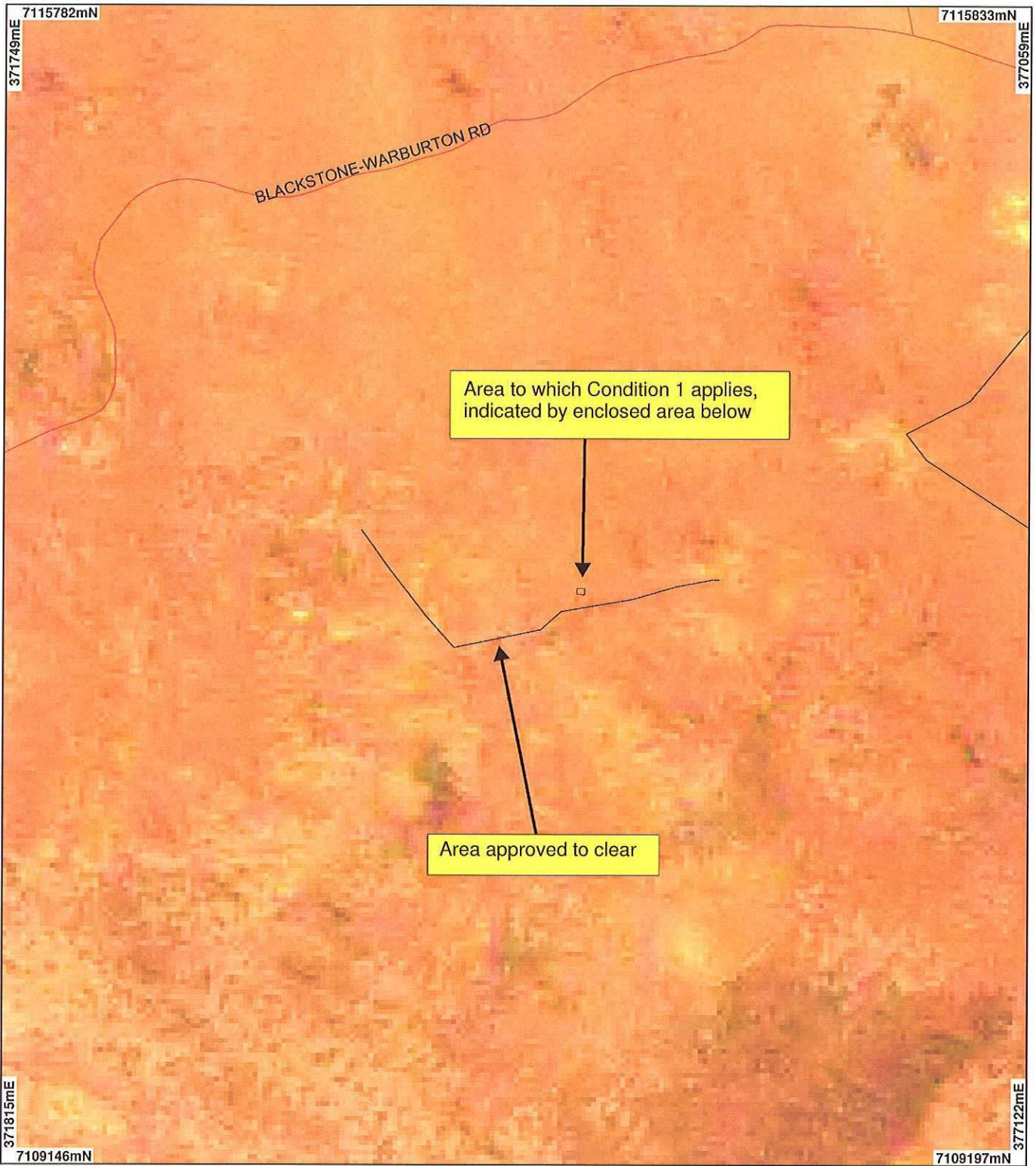


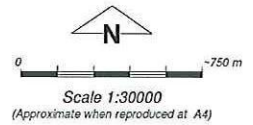
PLAN 874/2b



LEGEND

-  Road Centrelines - DLI 1/5/04 Clearing Instruments
-  Areas Subject to Conditions
-  Areas Approved to Clear

Western Australia ETM 25m
543 - AGO 2004



Note: the data in this map have not been projected. This may result in geometric distortion or measurement inaccuracies.

GRANAM COBBY

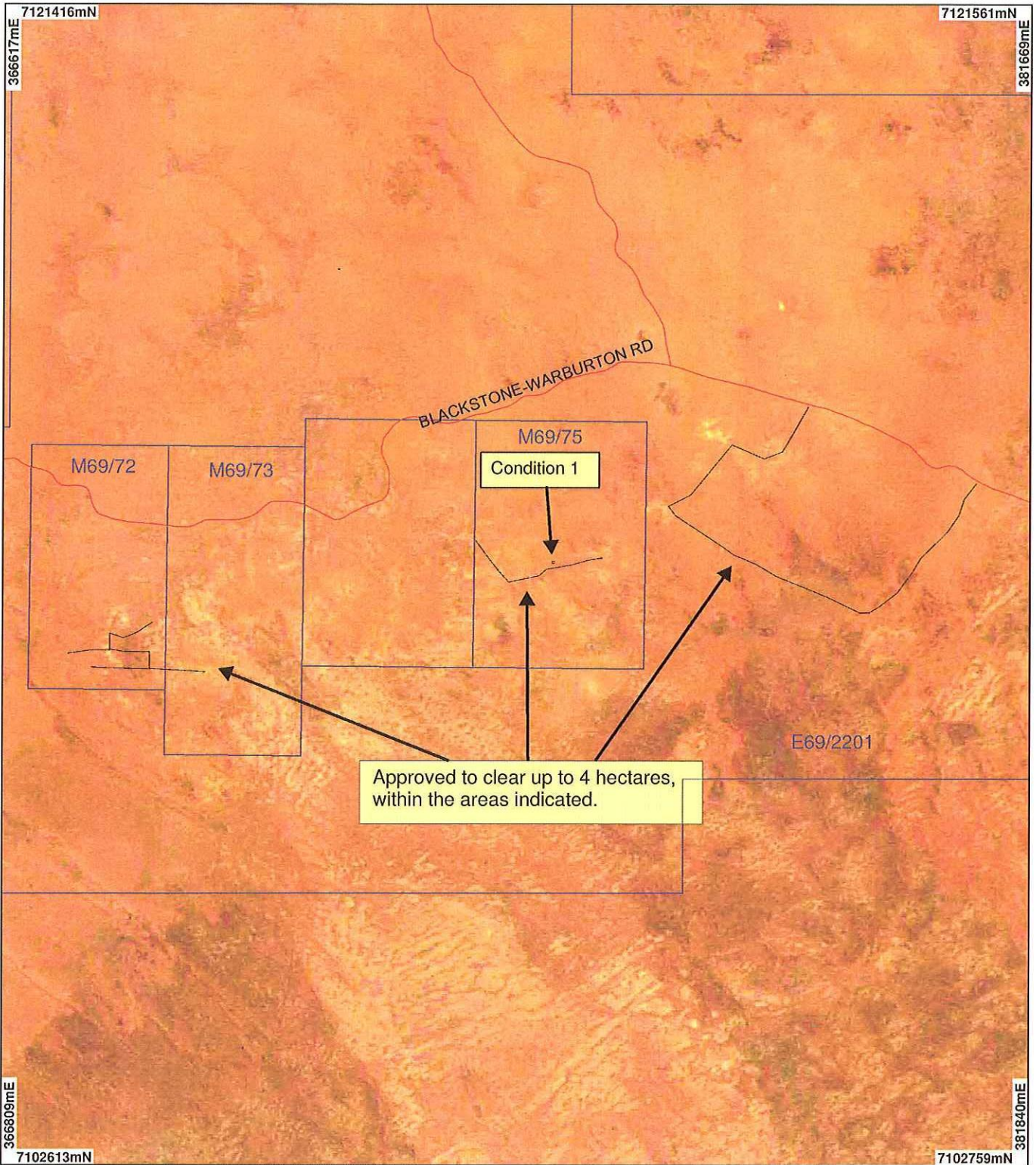
Date 20/9/07

Officer with delegated authority under Section 20 of the Environmental Protection Act 1986

Information derived from this map should be confirmed with the data custodian acknowledged by the agency acronym in the legend.

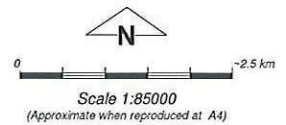


PLAN 874/2a



LEGEND

- Mining Tenements - DOIR
 - Road Centrelines - DLI 1/5/04
 - Towns - DLI 8/04
 - Clearing Instruments
 - Areas Subject to Conditions (cont)
 - Areas Approved to Clear
- Western Australia ETM 25m
543 - AGO 2004



Note: the data in this map have not been projected. This may result in geometric distortion or measurement inaccuracies.

Date 20/9/07

GRAHAM COBBY
Officer with delegated authority under Section 20 of the Environmental Protection Act 1986

Information derived from this map should be confirmed with the data custodian acknowledged by the agency acronym in the legend.

