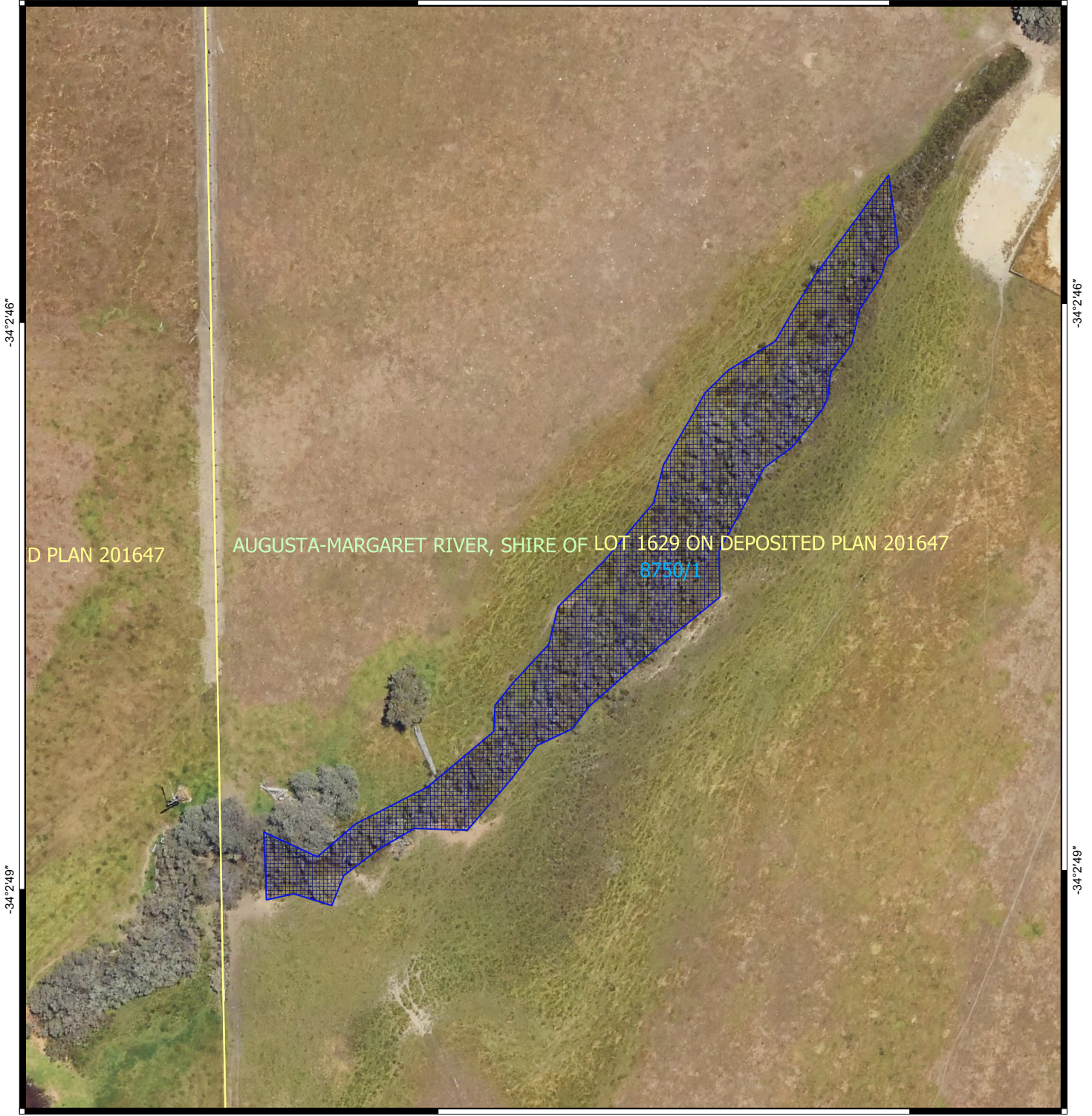


CPS 8750/1 - Map

115°7'15"




115°7'18"



115°7'15"

115°7'18"

Legend

-  CPS areas applied to clear
-  Local Government Authorities
-  Cadastre - LGATE 218



0 10 20 30 40 m



MGA 94
Geocentric Datum of Australia 1994



GOVERNMENT OF
WESTERN AUSTRALIA