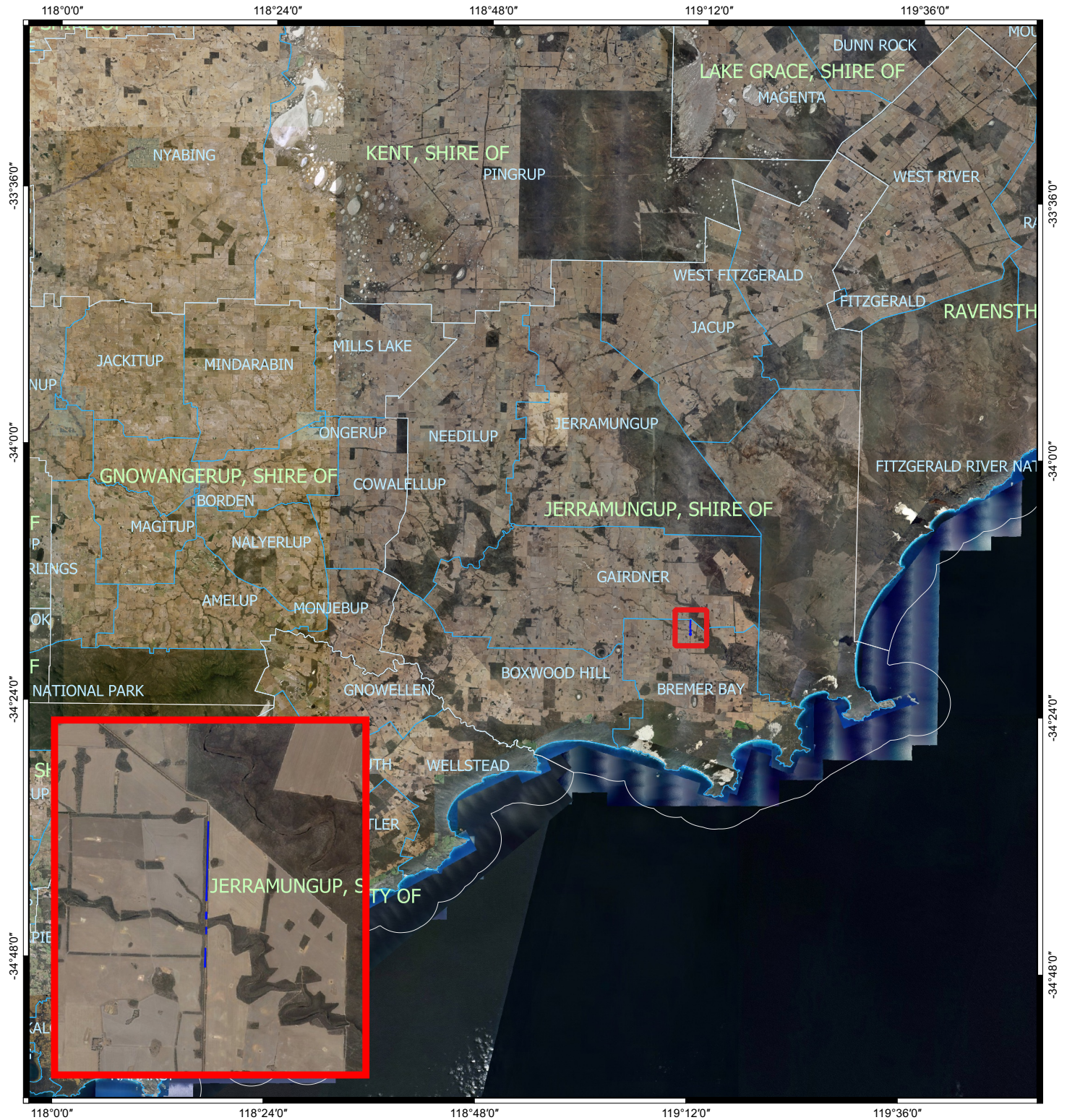
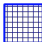



CPS 8751/1 - Context Map



Legend

-  CPS areas applied to clear
-  Local Government Authorities

0 10 20 30 40 km



MGA 94
Geocentric Datum of Australia 1994



Officer delegated under section 20 of the
Environmental Protection Act 1986



GOVERNMENT OF
WESTERN AUSTRALIA