

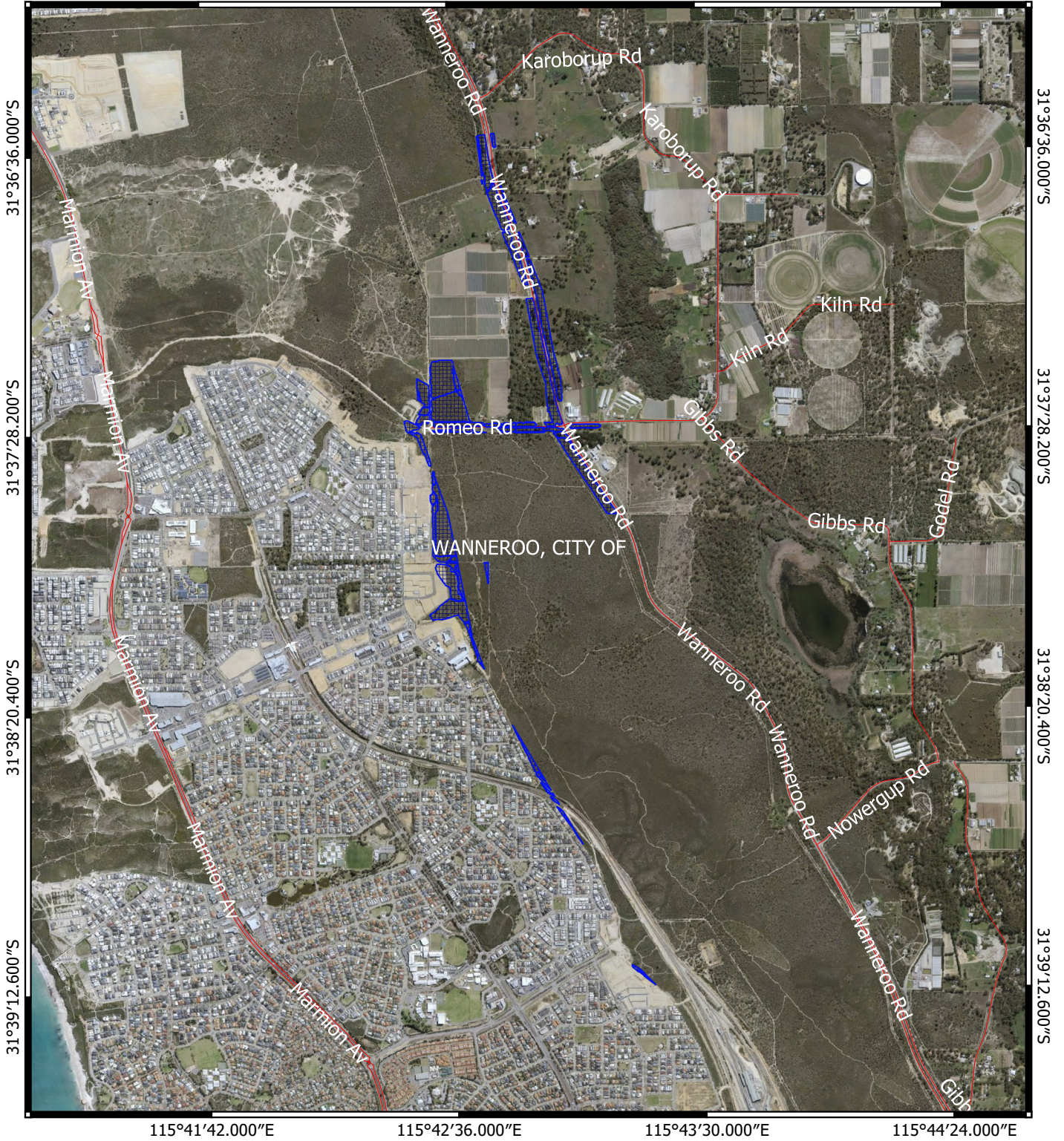
CPS 8753/1 Map

115°41'42.000"E

115°42'36.000"E


115°43'30.000"E

115°44'24.000"E



Legend

Cadastre - LGATE 218

 CPS areas applied to clear

Local Government Authorities

 Road Centrelines



0 500 1000 1500 2000 m



Officer delegated under section 20 of the
Environmental Protection Act 1986



GOVERNMENT OF
WESTERN AUSTRALIA