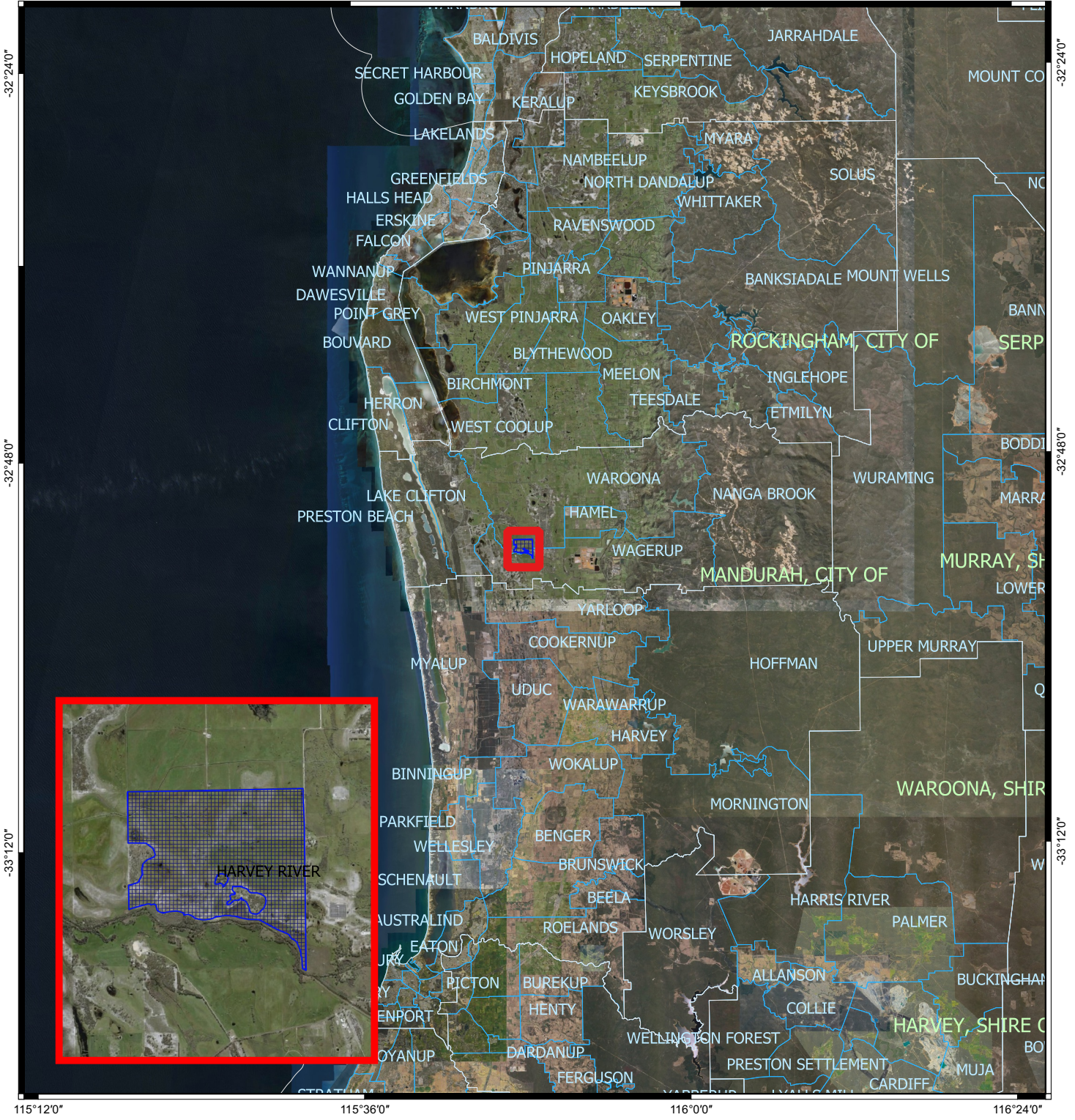



CPS 8758/1 - Context Map

115°36'0" 116°0'0" 116°24'0"



115°12'0" 115°36'0" 116°0'0" 116°24'0"

Legend

-  CPS areas applied to clear
-  Local Government Authorities
-  Localities - Landgate

0 10 20 30 40 km



MGA 94
Geocentric Datum of Australia 1994



Officer delegated under section 20 of the
Environmental Protection Act 1986



GOVERNMENT OF
WESTERN AUSTRALIA