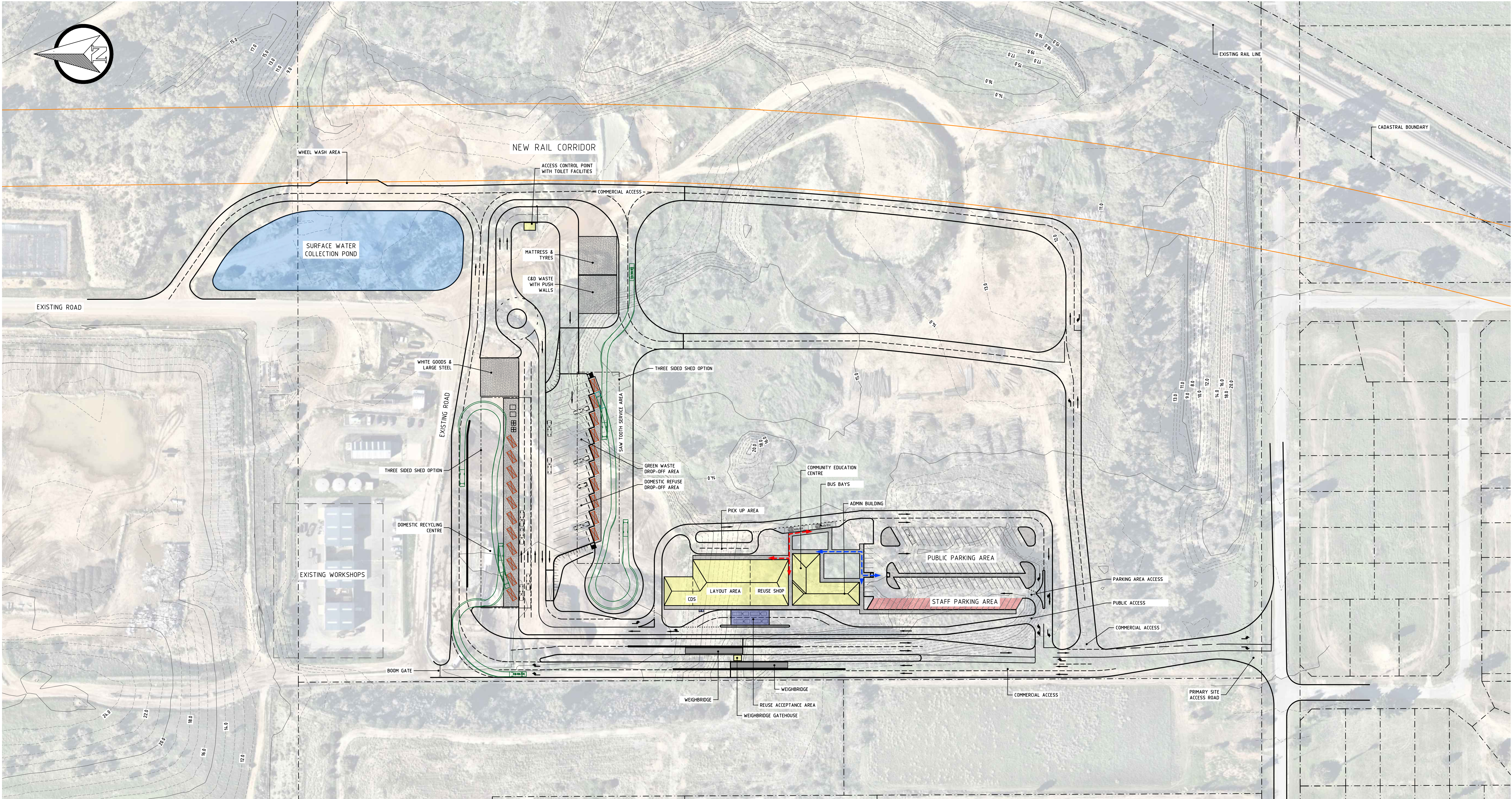


Printed by Armand Bester on 05.12.2019 14:06 PM

FILENAME: \\SERVER\TALIS\SECTIONS\WASTE\PROJECTS\T2007\T2002 - COCKBURN RECOVERY PARK\DRAWINGS\PROD\DRG\T2002 - SET.DWG



- LEGEND
- PEDESTRIAN MOVEMENT TO/FROM PARKING AREA
 - PEDESTRIAN MOVEMENT TO/FROM DROP-OFF AREA

PRELIMINARY ONLY
NOT FOR CONSTRUCTION



VERTICAL DATUM: AUSTRALIAN HEIGHT DATUM
HORIZONTAL DATUM: MGA 94 ZONE 50



talis
delivering solutions

www.talisconsultants.com.au

ASSET
ENGINEERING
ENVIRONMENT
NOISE
SPATIAL
WASTE

604 Newcastle Street,
Leederville WA 6007
PO Box 454, Leederville WA 6903



NOTES								
1. This drawing is the property of Talis Consultants Pty Ltd. It is a confidential document and must not be copied, used, or its contents divulged without prior written consent.								
	B	05.11.2019	AB	MS	ADMIN, ACCESS ROADS REVISED			
	A	07.08.2019	JAH	MS	PRELIMINARY ISSUE			
3. Parts of this drawing is intended to be IN COLOUR, Black & White Printing may cause errors or omissions. If this text is not GREEN, please contact Talis Consultants	No.	Date	JAH	CW	Amendment / Issue			App.

Project:

COCKBURN RESOURCE RECOVERY PARK

Title:

GENERAL ARRANGEMENT

Drawn by:	JAH	Job No:	TW18080
Checked by:	AB	File No:	TW18080-C-102
Approved by:		Drg. No:	
Scale:	1:1,000 @ A1	C-102	B
Date:			