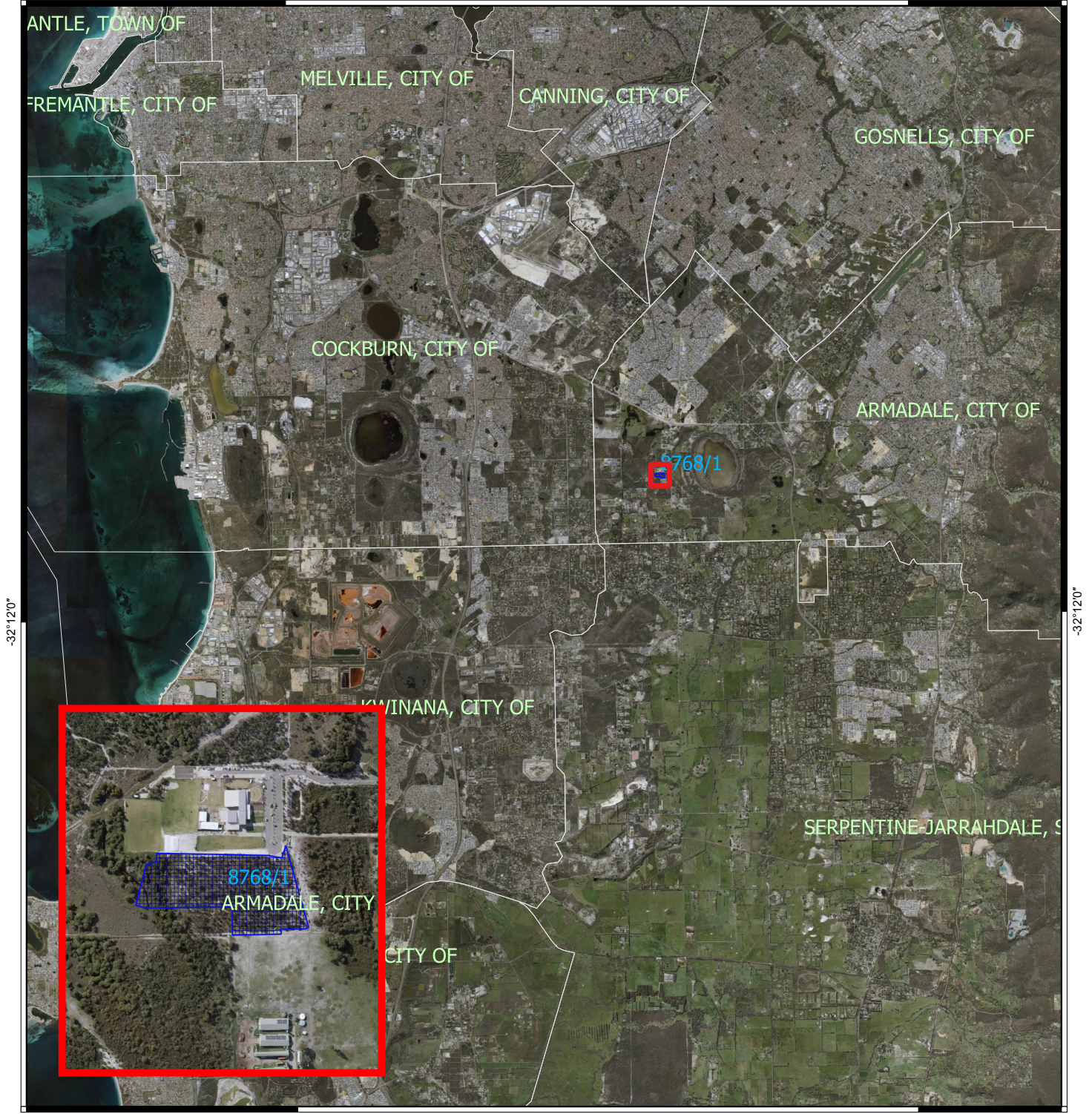


CPS 8768/1 - Context Map

115°48'0"

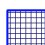

116°0'0"



115°48'0"

116°0'0"

Legend

-  CPS areas applied to clear
-  Local Government Authorities

0 2.5 5 7.5 10 km



MGA 94
Geocentric Datum of Australia 1994



Officer delegated under section 20 of the
Environmental Protection Act 1986



GOVERNMENT OF
WESTERN AUSTRALIA