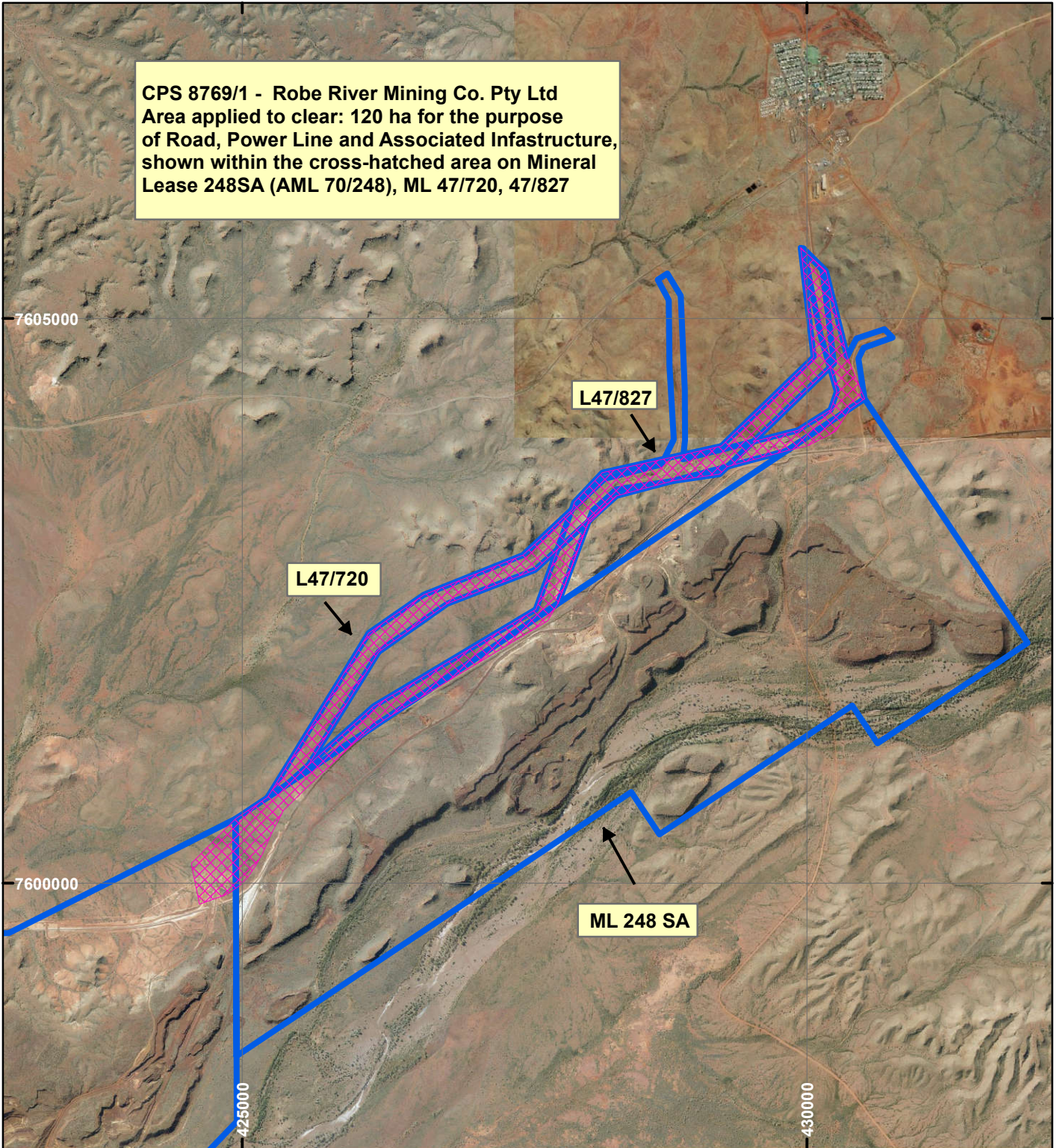


CPS CPS 8769/1 - Robe River Mining Co. Pty Ltd

CPS 8769/1 - Robe River Mining Co. Pty Ltd
 Area applied to clear: 120 ha for the purpose
 of Road, Power Line and Associated Infrastructure,
 shown within the cross-hatched area on Mineral
 Lease 248SA (AML 70/248), ML 47/720, 47/827

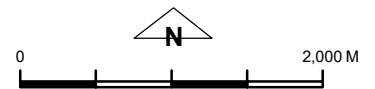


LEGEND

 Clearing Instruments

 Mining Tenements

Orthophotography sourced from Landgate



Scale 1:50,000

(Approximate when reproduced at A4)

Geocentric Datum Australia 1994

Note: the data in this map have not been projected. This may result in geometric distortion or measurement inaccuracies.

..... Date

Officer with delegated authority under Section 20 of the Environmental Protection Act 1986

Information derived from this map should be confirmed with the data custodian acknowledged by the agency acronym in the legend.



WA Crown Copyright 2002