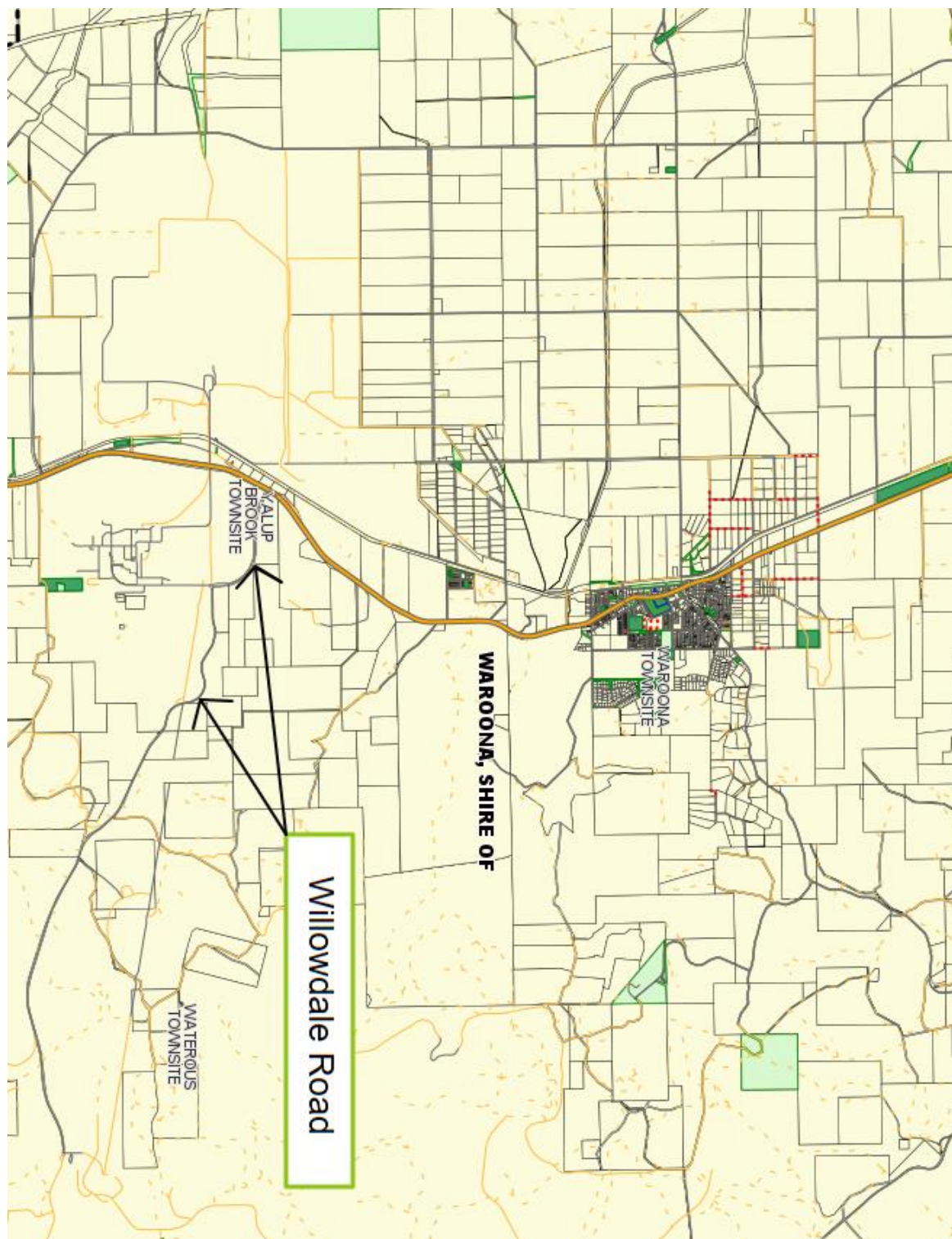


# Index

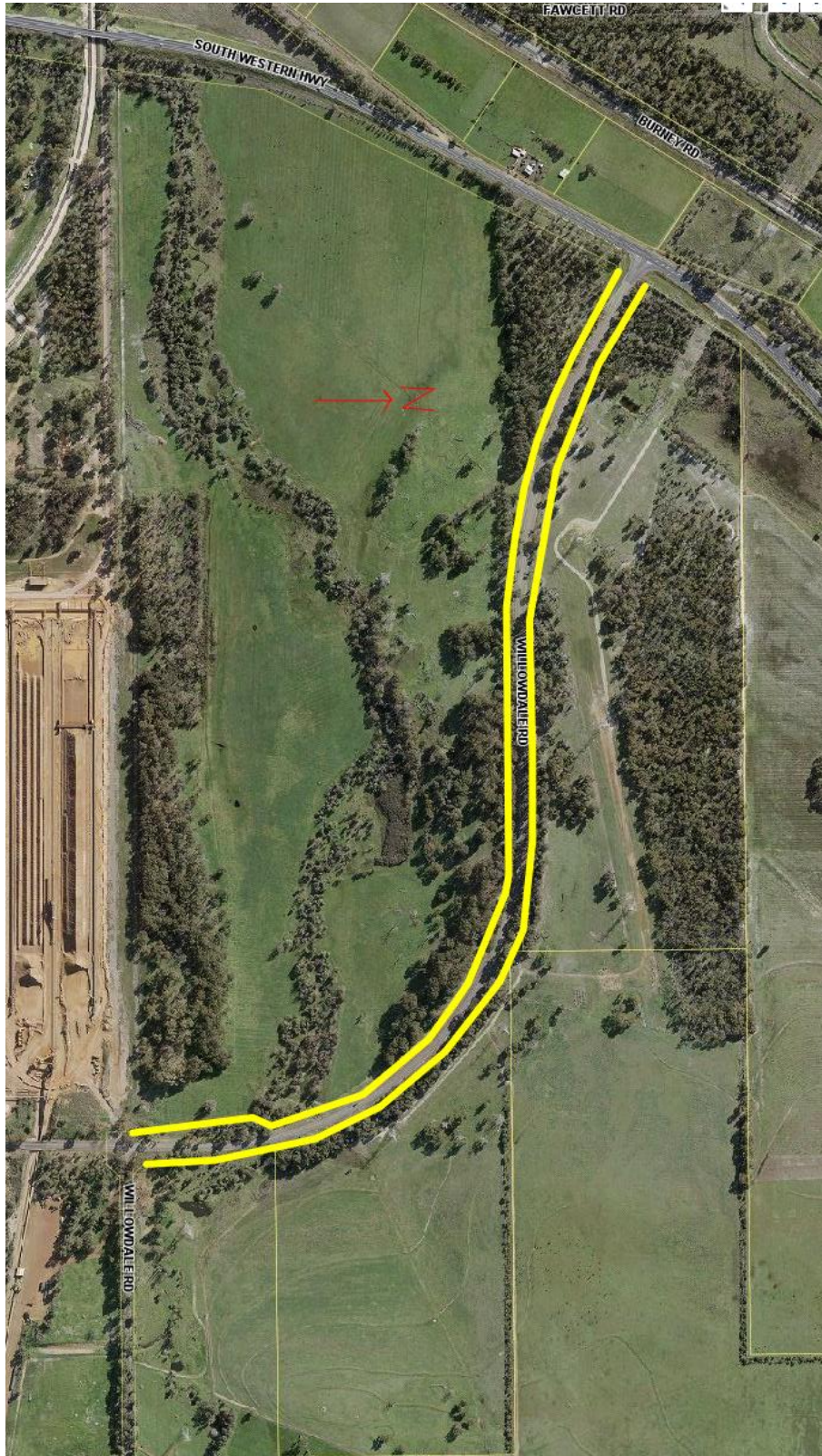
Location Plan.....	11
Aerial Map.....	12-14
Photo.....	15-23
Incident Report.....	24
Willowdale Access Road Assessment 2019.....	25-26

# Location Plan

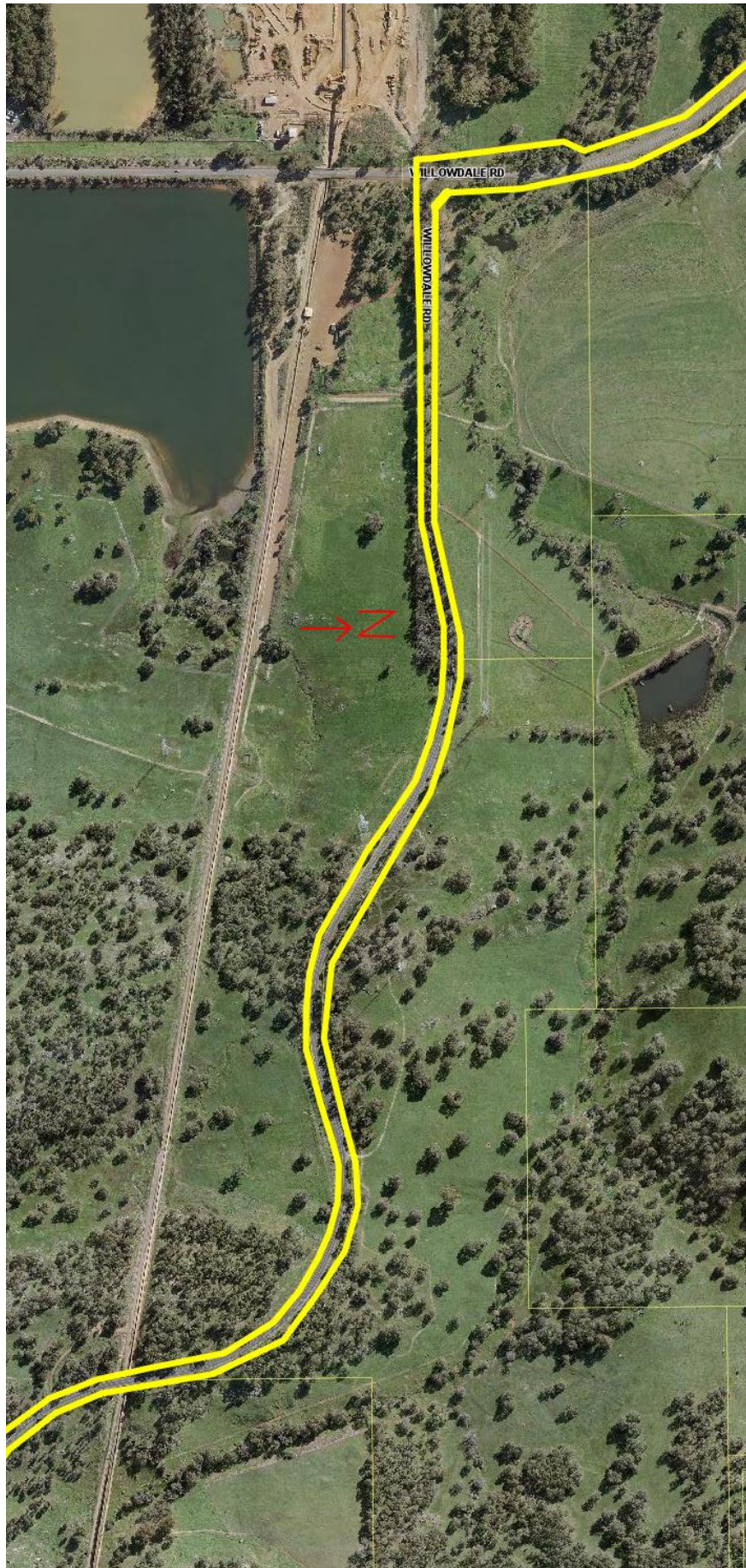




# Aerial Map













# Photo

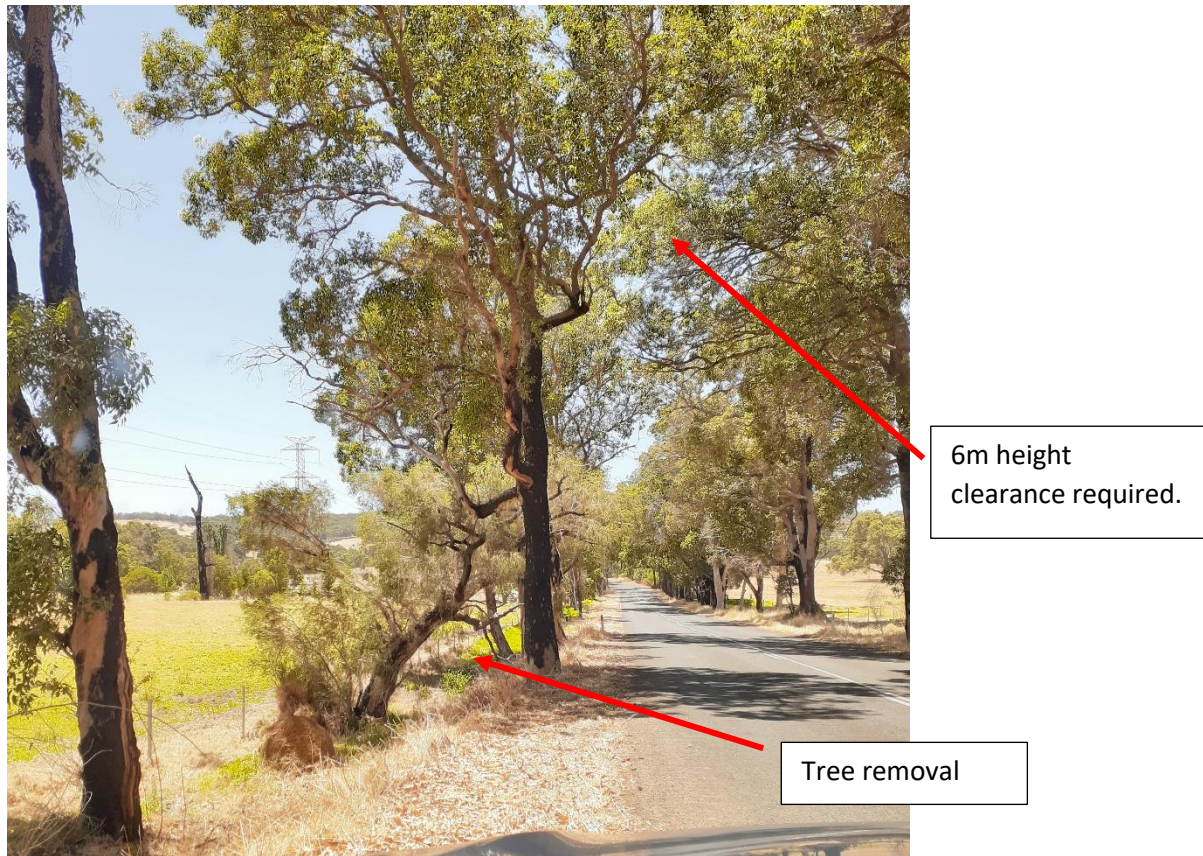


**Additional Photos – 13.01.2019**



Overview of road verge from SW Highway to the 2km mark. Majority of the pruning is on the northern side of the road.





2km Verge view. The Trees are encroaching on the road with some trees like the one circled needing removal and others just needing pruning to allow for the 6m height clearance.





Closer image of the burnt trees which have become brittle and are causing limbs to drop onto the road which is causing a hazard to road users.





Large tree which is dead to be removed. This section only required the one removal.





Dead tree on the norther section of the road which is overhanging the road. This section required a few tree removals of a similar type. These trees were burnt in the 2016 fires.



This is an example of what is happening with some of the dead trees. The dead limbs are falling on the road verge and road which is causing a hazard to road users.





This section of the road has a large section of regrowth which will be mulched from the road verge by the posi track machine. The plan will be for us to create a 3m road verge from the edge of the seal.



On the opposite section of the road there are several trees which are overhanging the road and causing a hazard to motorist. These vary between 3-5m from the edge of the seal. The trees are dead and are dropping limbs all the time.



# Incident Report

Private vehicle hits tree on Willowdale Road	
STATUS	Safety investigation complete
WHEN	Thursday 4 <sup>th</sup> July 2019 @ 06:09
WHERE	Willowdale Road
WHAT	<ul style="list-style-type: none"><li>• Employee travelling home from NS – 06:04</li><li>• 2 x employees came across tree, stopped with hazard lights</li><li>• Employee approaching did not see the tree until approx. 6-10m and took evasive action but contact was made</li><li>• Airbags deployed upon impact</li><li>• Driver was able to exit the car without assistance, colleagues attended to driver</li><li>• ERO attended the scene</li><li>• Driver was sore from deployment of airbags however sustained no other injuries</li></ul>
CORRECTIVE ACTIONS	Shire contacted and permission granted for Alcoa to arrange the removal of suspect trees – (WA Hort)
LEARNINGS	<ul style="list-style-type: none"><li>• Report any suspect trees</li><li>• Always eliminate (if possible) and report and hazards</li></ul>
	

Email attached with further information.

# Willowdale Access Road Assessment 2019

## Dead tree area 7-8km down from Willowdale mine site

WA Horticultural Services undertook an assessment of some Willowdale access road trees in July 2019. This was done after concern from fallen tree that had landed on a car from fire damage from 2016. The site shows this was one of the areas of the fire where it was at hottest causing a lower survival rate to *Corymbia calophylla* (Redgum / marri) in the area.

### **Reasons for Tree removal/prune/clean up:**

1. Dead trees - high risk of failure (already falling)
2. Poor stem form and quality
3. Poor location e.g. Embankments /utilities
4. Vehicle clearance
5. Fire reduction, including rubbish build up areas.
6. Possible rot with the build up with leaf matter.
7. Open the are for regrowth with less impact of falling dead wood.

Suggested Dead trees to be removed are photographed below.

### Lower Access Road

This area has approximately 15 dead trees that needs to be removed for road safety, the trees are either leaning or too close to the road. There are no signs of life in the existing trees, and if left the risk of decay causing future car accidents.

There is a substantial regrowth of new seedlings and the removal of these trees will help promote better shape.





As you can see the Willowdale road is narrow and used frequently to locals and mining (ALCOA). The risk of these trees could be catastrophic if one was to fall or drop a branch.



**Please note** WA Horticultural Services has looked at these areas with the best intentions to locate as many of the safety priorities as possible. However, we do not have the ability to look inside the tree or predict tree health, insect activity, weather/winds conditions of the future. Therefore, can take no responsibility for events that might happen.

Regards

Julie Rowles

Manager Director

Dip.Cert.Arb Horticulture

WA Horticultural Services