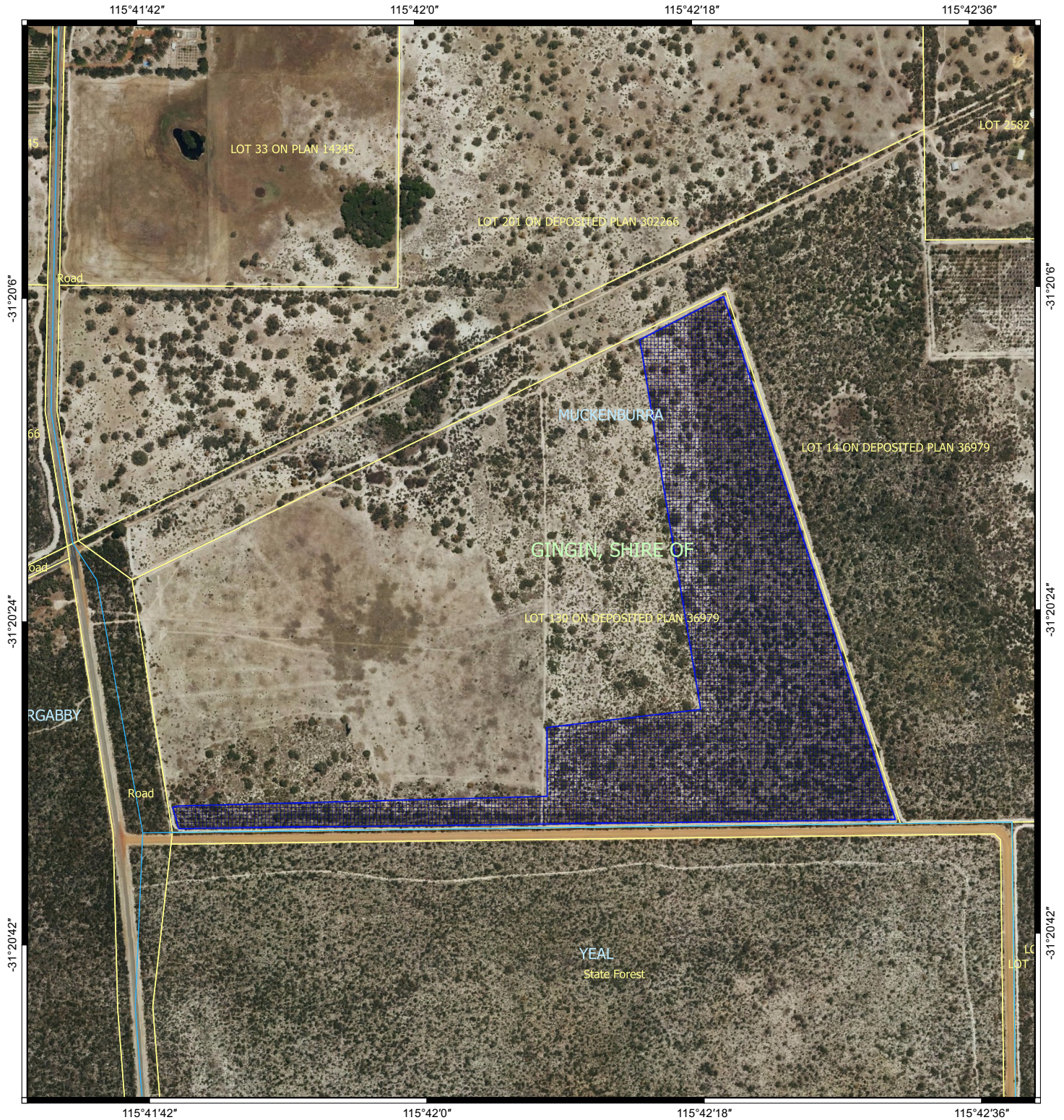


# CPS 8774/1 - Map



## Legend

-  CPS areas applied to clear
-  Local Government Authorities
-  Cadastre - LGATE 218
-  Localities - Landgate



0 100 200 300 400 m



MGA 94  
Geocentric Datum of Australia 1994

Officer delegated under section 20 of the  
Environmental Protection Act 1986



GOVERNMENT OF  
WESTERN AUSTRALIA