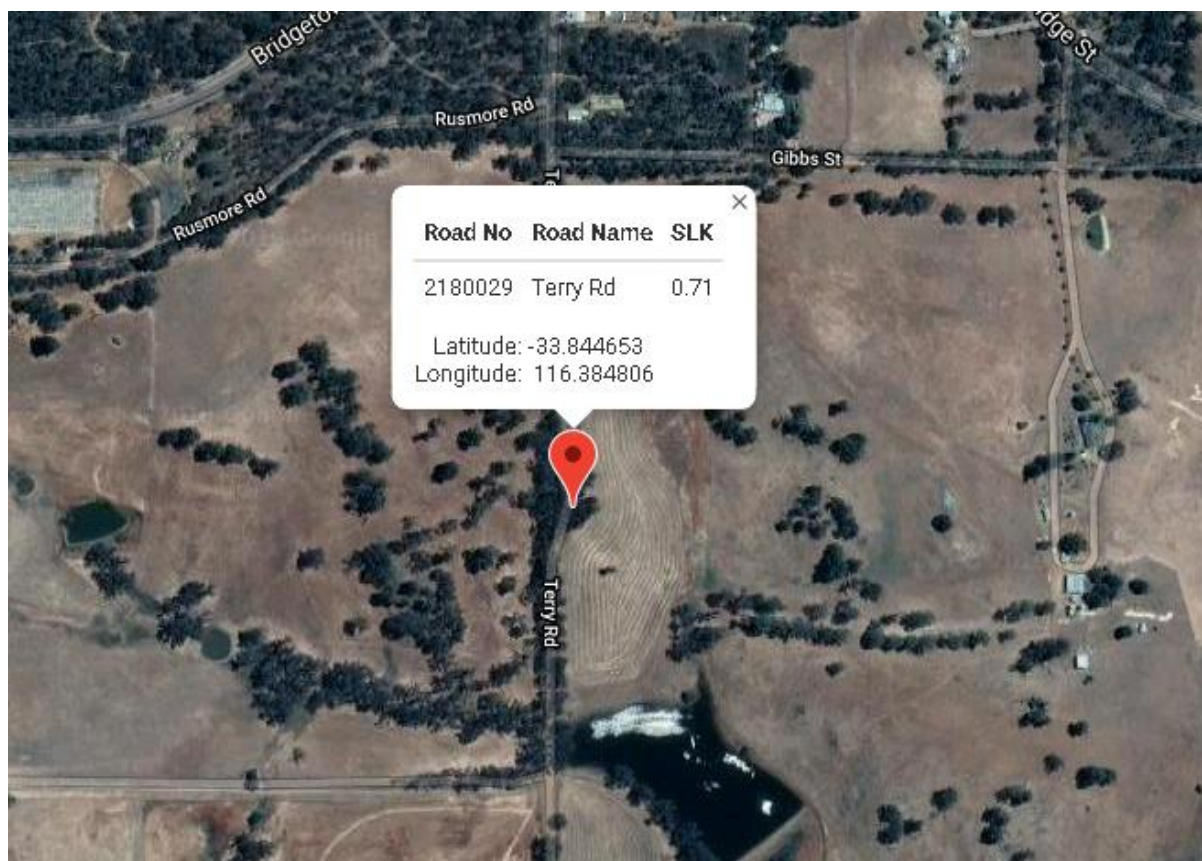


Terry Road, Boyup Brook Blind Bend - Location. Total distance of the line of site proposed clearing is 120 meters SLK 071 to SLK 0.83





Tree No 1. Right on the edge of the steep bank that needs to be removed including some of the bank to widen the corner.



Tree No 1,2,3. Right on the edge of the steep bank that needs to be removed including removing some of the bank to widen and lift the corner.



Tree No 3 & 4. Right on the edge of the steep bank that needs to be removed including some of the bank to widen the corner.



Tree No 5 & 6. Right on the edge of the steep bank that needs to be removed including some of the bank to widen the corner.



Tree No 7. Right on the edge of the steep bank that needs to be removed including some of the bank to widen the corner.



Tree No 8. Right on the edge of the steep bank that needs to be removed including some of the bank to widen the corner.