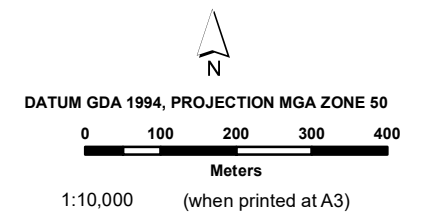
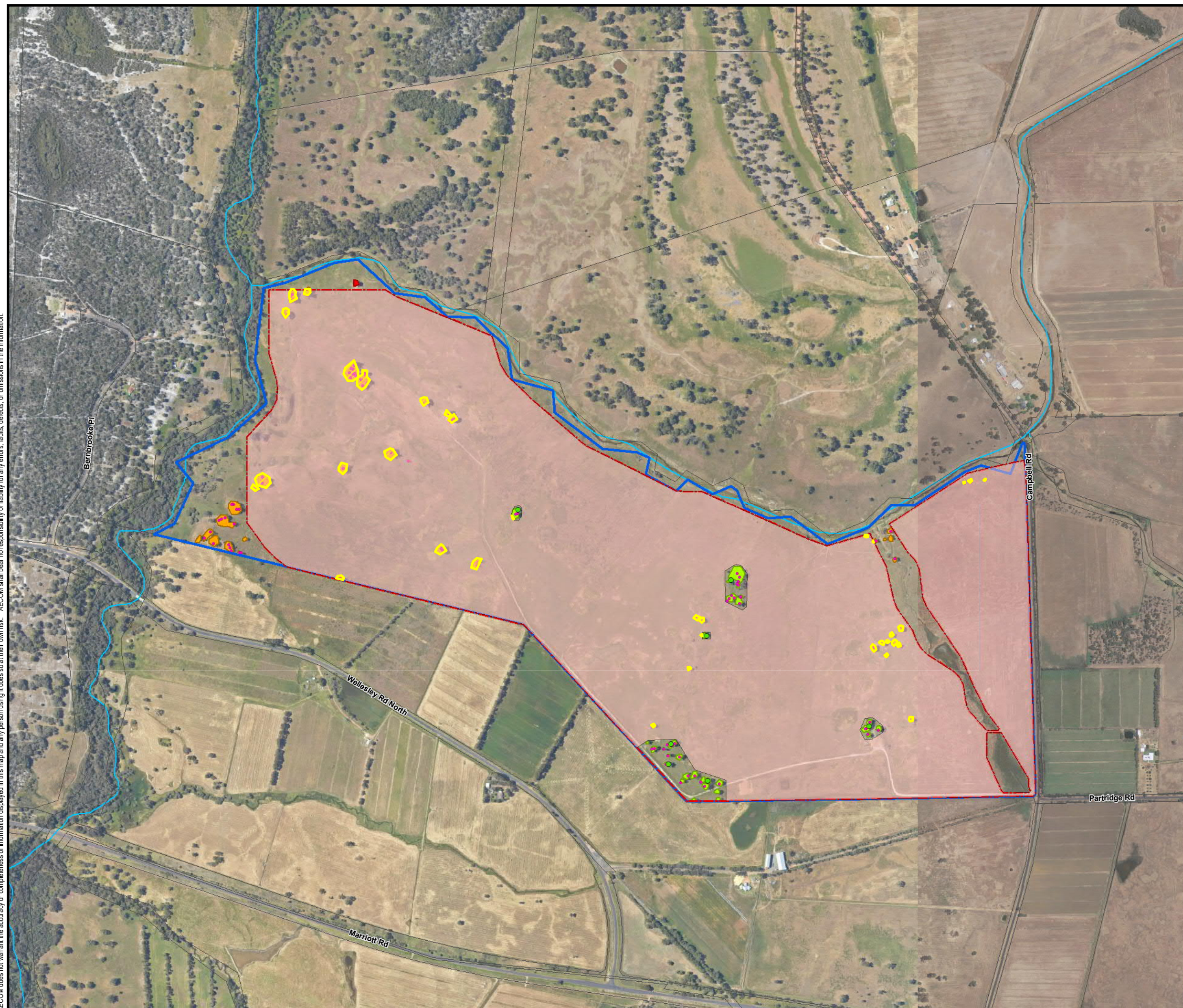


AECOM does not warrant the accuracy or completeness of information displayed in this map and any person using it does so at their own risk. AECOM shall bear no responsibility or liability for any errors, faults, defects, or omissions in the information.



- LEGEND**
- Lot Boundary
(Lot 0 on Diagram 685 – Land ID 039815)
 - Development Envelope
 - Development Footprint
 - Clearing Permit Area (0.96 Ha)
 - Cadastral Boundary
 - Black Cockatoo Breeding Trees
 - Potential Black Cockatoo Breeding Trees
- Carnaby Habitats**
- High Quality
 - Quality
 - Low Quality



Data sources: Sources: Esri, HERE, Garmin, USGS, Intermap, INCREMENT P, NRCan, Esri Japan, METI, Esri China (Hong Kong), Esri Korea, Esri (Thailand), NGCC, © OpenStreetMap contributors, and the GIS User Community Department of Planning, Lands and Heritage (Local Planning Scheme No.7 - 31/08/2018)

Base Data: (c) Based on information provided by and with the permission of the Western Australian Land Information Authority trading as Landgate (2010).

Indicative Project Development Layout

**SE CAMPBELL DEVELOPMENT
 PTY LTD**
*BENGER SOLAR FARM
 NATIVE VEGETATION CLEARING
 PERMIT APPLICATION*

Figure
7