

# CPS 8835/1 - Map (a)

115°34'12.000"E

115°34'48.000"E

29°18'0.000"S

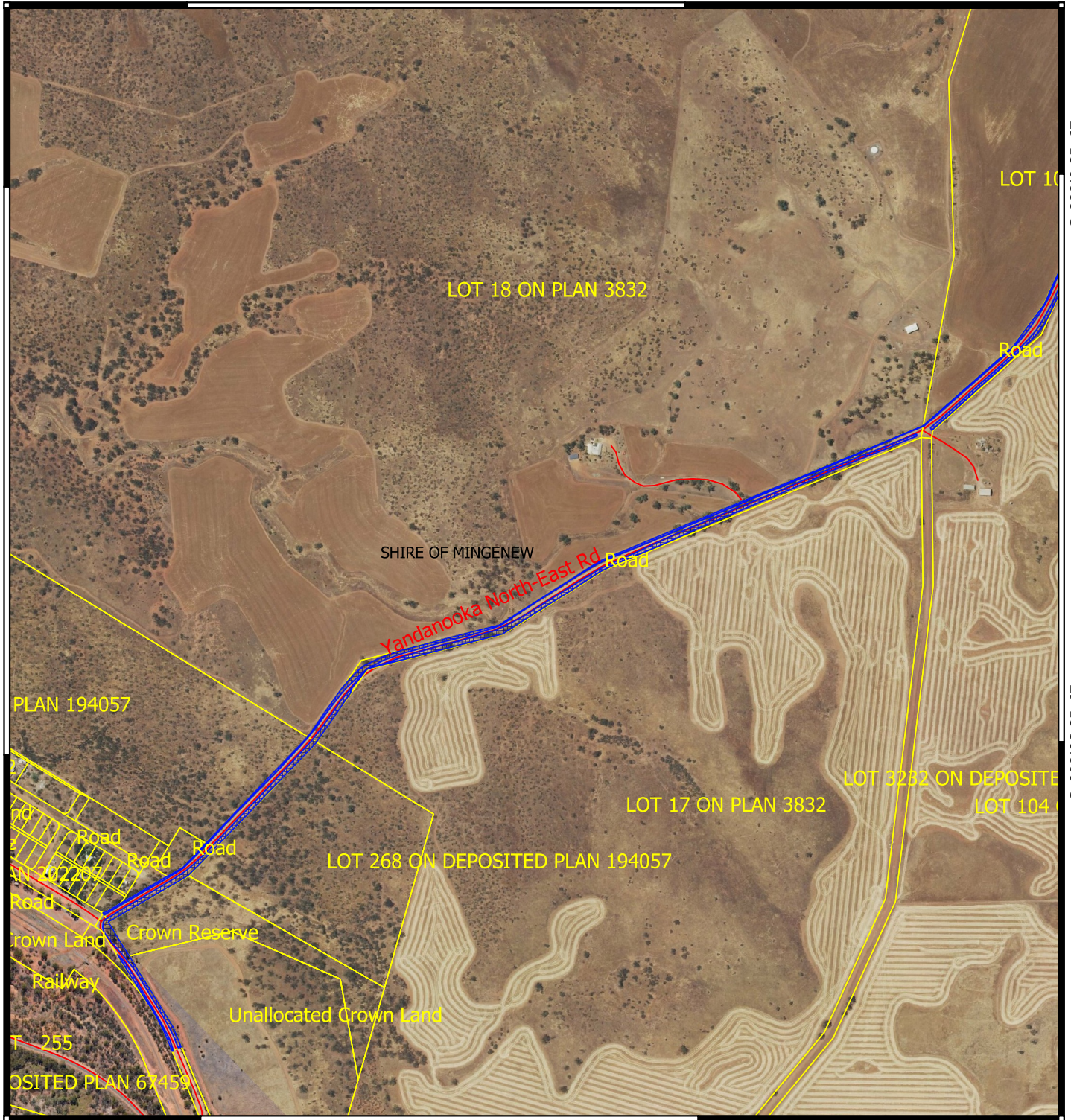
29°18'0.000"S

29°18'36.000"S





29°18'36.000"S

115°34'12.000"E

115°34'48.000"E



## Legend

-  CPS areas applied to clear
-  Cadastre - LGATE 218
-  Local Government Authorities
-  Road centrelines

MGA 94  
Geocentric Datum of Australia 1994

0 100 200 300 400 500 m



GOVERNMENT OF  
WESTERN AUSTRALIA