

CPS 8835/1 - Map (b)

115°35'24.000"E

115°36'0.000"E

29°17'24.000"S

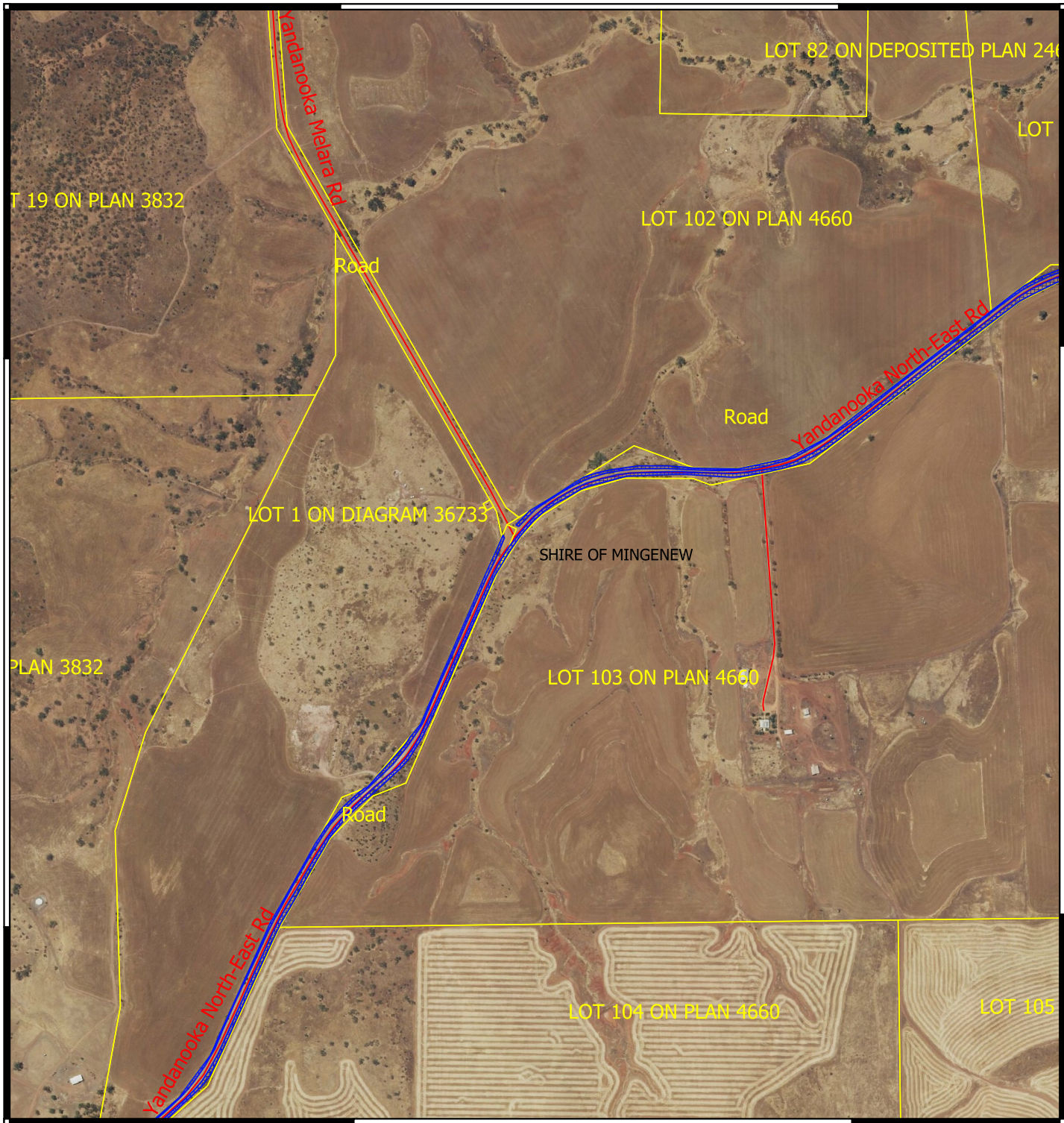
29°17'24.000"S

29°18'0.000"S





29°18'0.000"S

115°35'24.000"E

115°36'0.000"E



Legend

-  CPS areas applied to clear
-  Cadastre - LGATE 218
-  Local Government Authorities
-  Road centrelines

MGA 94
Geocentric Datum of Australia 1994

0 100 200 300 400 500 m



GOVERNMENT OF
WESTERN AUSTRALIA