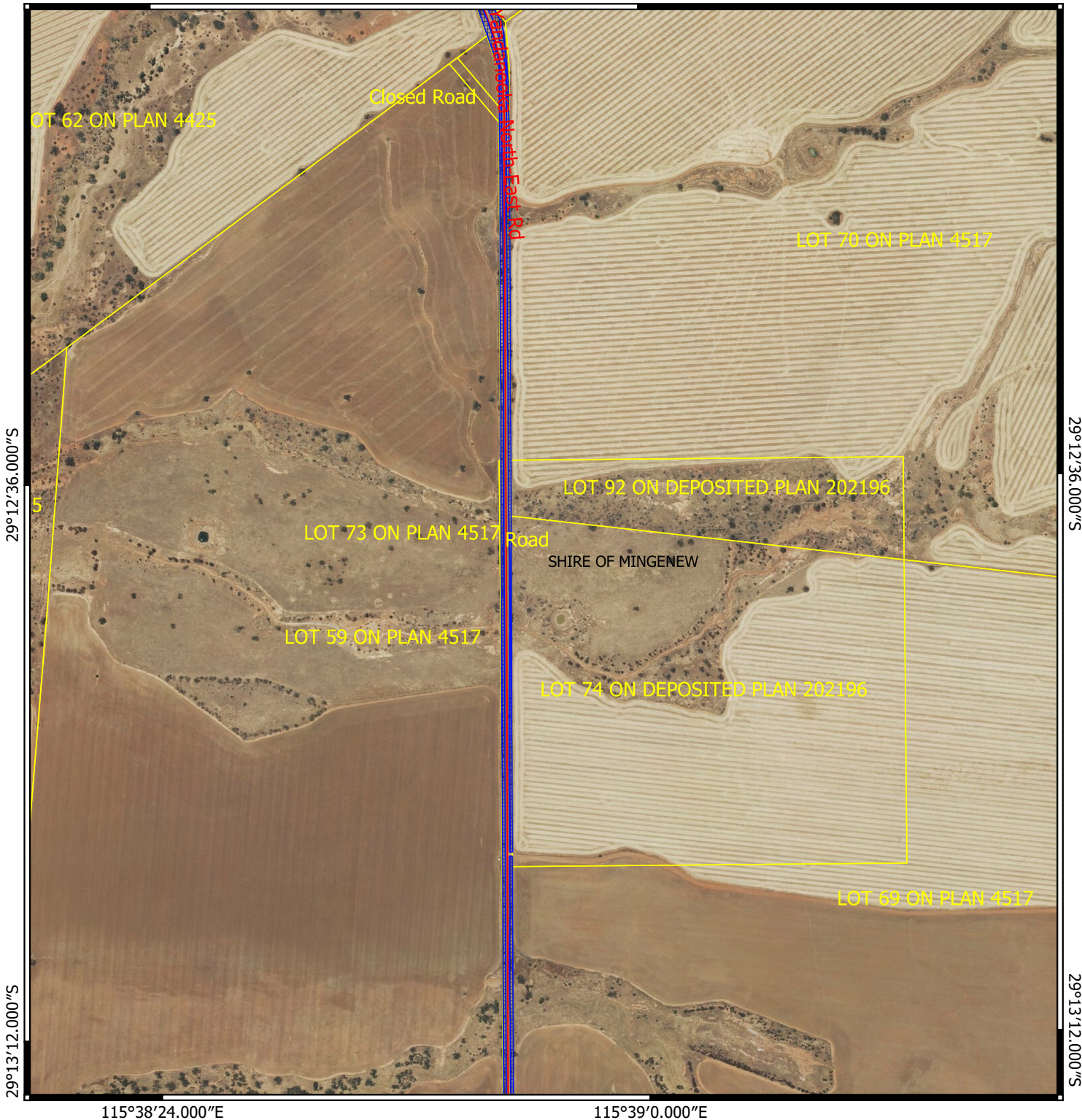






# CPS 8835/1 - Map (h)

115°38'24.000"E

115°39'0.000"E



## Legend

-  CPS areas applied to clear
-  Cadastre - LGATE 218
-  Local Government Authorities
-  Road centrelines

MGA 94  
Geocentric Datum of Australia 1994

0 100 200 300 400 500 m

