

CPS 8835/1 - Map (j)

115°38'24.000"E

115°39'0.000"E

29°10'48.000"S

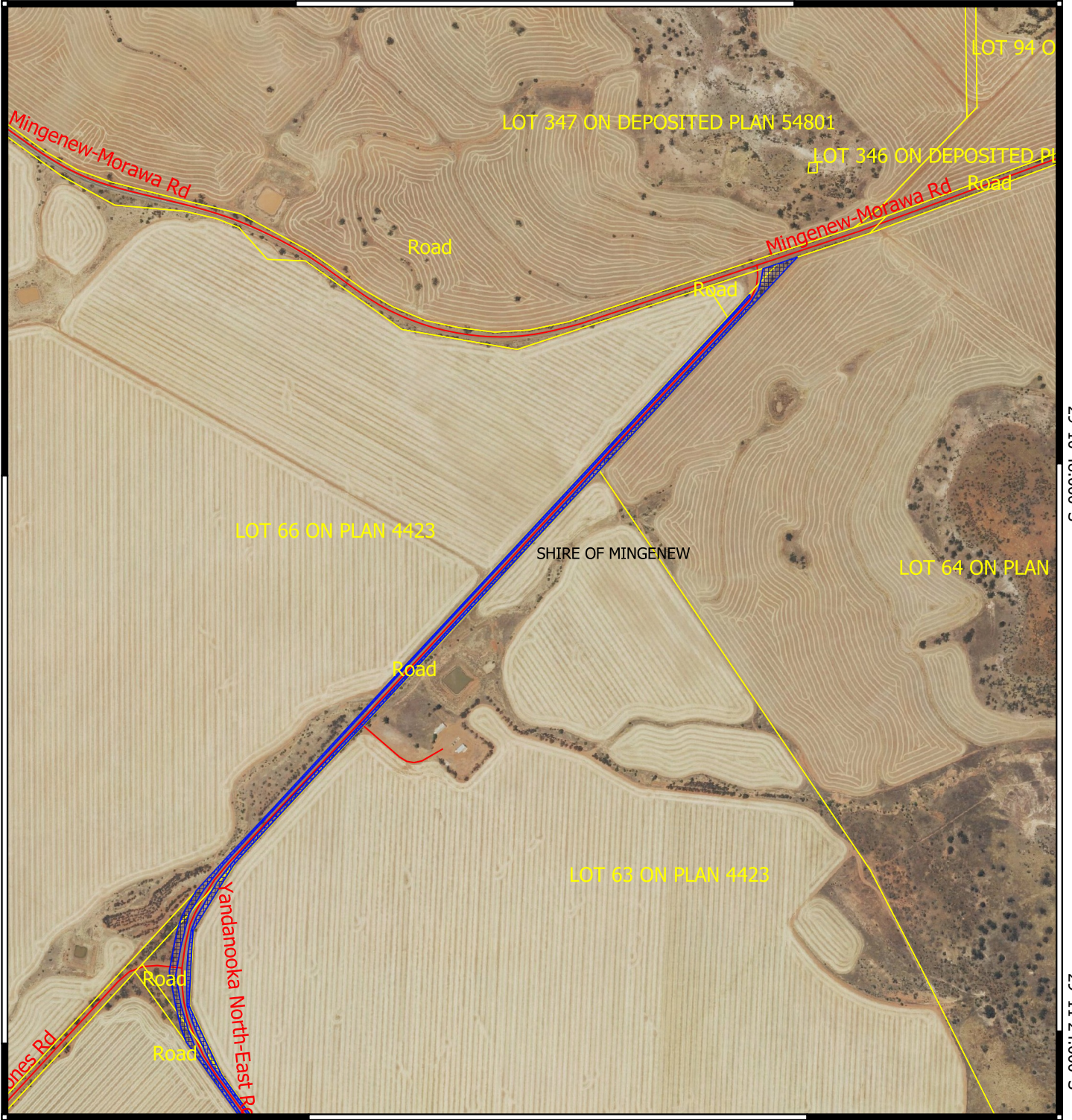
29°10'48.000"S

29°11'24.000"S

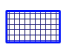
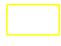


29°11'24.000"S

115°38'24.000"E

115°39'0.000"E



Legend

-  CPS areas applied to clear
-  Cadastre - LGATE 218
-  Local Government Authorities
-  Road centrelines

MGA 94
Geocentric Datum of Australia 1994

0 100 200 300 400 500 m



GOVERNMENT OF
WESTERN AUSTRALIA