



---

# Desktop Assessment Report for Native Vegetation Clearing Application

Report generated: Tue Feb 25 13:14:34 AEDT 2020

---

**Please complete the details below:**

**Applicant:** City of Cockburn

**Your reference:** Hammond Road duplication

**Property:** (L) HAMMOND, SUCCESS

(H) 275 HAMMOND, SUCCESS

() ,

(L) BARTRAM, SUCCESS

(H) 53 BANINGAN, SUCCESS

(H) 210 HAMMOND, SUCCESS

(H) 222 HAMMOND, SUCCESS

**LGA:** COCKBURN, CITY OF

**Proposed Clearing:** 0.42 hectares \_68\_\_\_\_\_ trees

**Purpose:** Hammond Rd duplication

**Land Tenure:** City of Cockburn

**Buffer distance:** 5km

---

## Notes

- This report is designed to support Local Governments with native vegetation clearing permit applications.
- This report is a desktop study and does not replace a site assessment
- The information generated in this report is correct to the best of WALGA's knowledge. WALGA takes no responsibility for decisions made using this report.
- Further information on how to interpret the datasets is available in the [Explanatory Notes](#).
- Further information about the clearing principles is available from the [Department of Water and Environment Regulation \(DWER\) "A guide to the assessment of applications to clear native vegetation"](#).

## Interpreting this report

- This report will assist the user to determine if the proposed clearing is 'at variance', 'may be at variance', 'not likely to be at variance' or 'not at variance' to any of the clearing principles contained Schedule 5 of the Environmental Protection Act 1986 (EP Act).
- If using this report to complete an assessment as part of your desktop study under your Strategic Purpose Permit and an 'at variance' result is produced, you may refer your application to DER for clarification. Please use the template referral email located here (link to the template I have prepared). Please note that the Strategic Purpose Permit applies to clearing that is 'not at variance' or 'not likely to be at variance' to any of the clearing principles proposed clearing that 'may be at variance' or 'is at variance' will need to be referred to DER for review.
- If using this report as supporting information for a clearing permit application, please email this report, a covering sheet and accompanying shapefile with the application form and [payment \(Form C3\)](#) to the [DWER](#)
- If you are unsure about the levels of variance identified in this report and require further clarification, please seek further advice from DER by submitting a [referral form](#) via [email](#) or alternatively phone (08) 6364 7000.
- The 'may be at variance' and 'at variance' levels determined in this report identifies that a clearing principle requires further attention. A more detailed assessment (including a site visit may be required) and further identification of impacts may alter the variance levels. If you wish to seek clarification on the altered variance level, please seek advice from your Local Government Environment Team in the first instance and DWER via [email](#) or alternatively phone (08) 6364 7000, using your Permit Number for reference..  
NB: Any actions you take should be accounted for and recorded. This information should be provided in your annual report and is subject to DWER auditing.

Distance and area calculations are performed using the following map projection:  
EPSG:28350

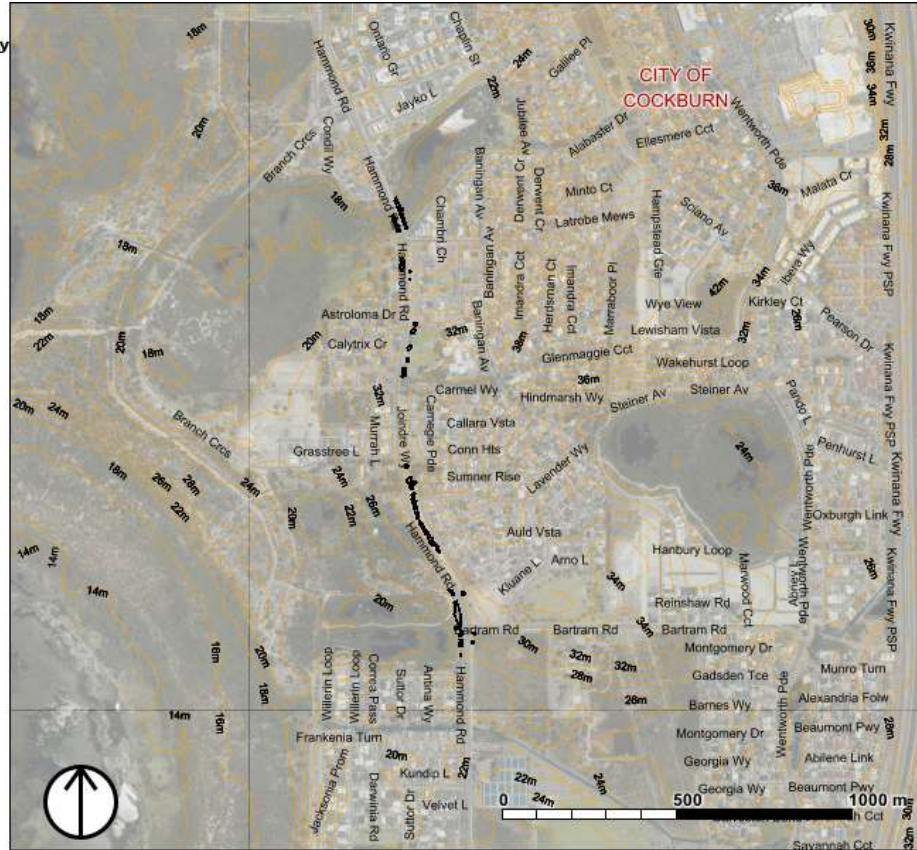
---

# 1 Background details

## 1.1 Site details

### Legend

- Local Government Authority
- State Roads
- Other Roads
- DAFWA 2m Contours
- Hydrography



Property:

(L) HAMMOND, SUCCESS  
 (H) 275 HAMMOND,  
 SUCCESS  
 ( ) ,  
 (L) BARTRAM, SUCCESS  
 (H) 53 BANINGAN,  
 SUCCESS  
 (H) 210 HAMMOND,  
 SUCCESS  
 (H) 222 HAMMOND,  
 SUCCESS

Local Government Authority:

COCKBURN, CITY OF

DER Region:

SWAN

DBCA District:

SWAN COASTAL

GPS coordinates lat/long:

32.1404S,115.8455E

Environmentally Sensitive Area:

y

EPA Position Statement No.2 Area:

n

EPA Red Book Area:

n

Country Areas Water Supply Act 1947 - Clearing Control Catchment:

No

Rights in Water and Irrigation Act 1914 area:

Jandakot Groundwater Area

Clearing Area (ha):

0.42

## 1.2 (Principle (e)) Mapped vegetation description

### Legend

Local Government Authority



State Roads



Other Roads



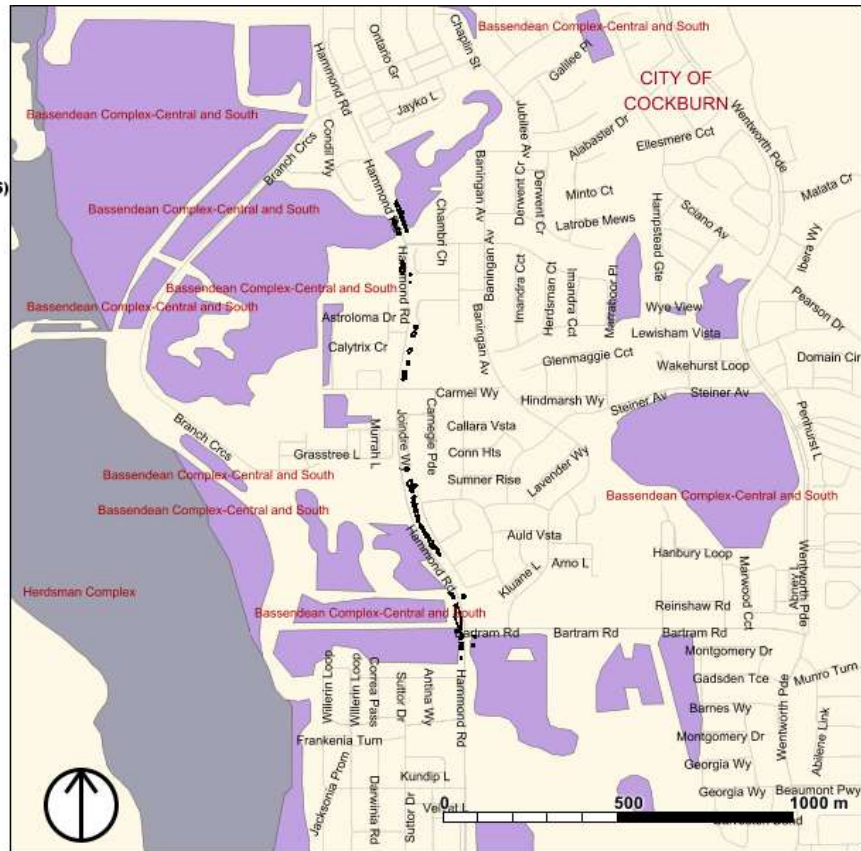
Vegetation Complexes (DPaW, 2016)

Zoom in to see remnant vegetation labelled by Complex

Coast and Sea

water

land



Interim Biogeographic Regionalisation for Australia (IBRA) region:  
Swan Coastal Plain / Perth(SWA02)

Beard vegetation associations by IBRA region:

IBRA Region	Association	Rarity %	Area (ha)
Swan Coastal Plain	1001	22.05	0.01

Beard vegetation associations by Local Government Authority:

LGA	Association	Rarity %	Area (ha)
COCKBURN, CITY OF	1001	27.33	0.01

### Beard Association : description

1001 : Medium very sparse woodland; jarrah, with low woodland; banksia & casuarina

Area of remnant vegetation remaining within 10km of the selected area (local area vegetation retention). Land area is based on pre-European extent of Beard Vegetation Association mapping within the 10km buffer.

Veg area = 81.12 sqkm, land area = 321.58 sqkm. Percentage rem veg remaining = 25.22%

South West Region vegetation complexes:

Complex	Classification	Area (ha)
Bassendean Complex-Central and South	b, d	0.01

Vegetation complexes occurring within the Swan Coastal Plain and Jarrah Forest are classified into the following categories shown in brackets after the complex name:

- a) Vegetation complexes with less than 10% of pre-European extent remaining and < 10% being protected within the Swan Coastal Plain and Jarrah Forest IBRA regions
- b) Vegetation complexes with less than 30% of pre-European extent remaining and less than 10% being protected within the Swan Coastal Plain and Jarrah Forest IBRA regions
- c) Vegetation complexes with only 1500 ha or 15% or less protected for conservation in the Jarrah Forest IBRA-region
- d) Vegetation complexes with only 400 ha or 10% or less protected for conservation on the Swan Coastal Plain portion of Perth and Peel
- e) Vegetation complexes with less than 10% of pre-European extent protected within the Swan Coastal Plain and Jarrah Forest IBRA regions (and not already listed above)
- f) Vegetation complexes with less than 30% of pre-European extent remaining within the Swan Coastal Plain and Jarrah Forest IBRA regions
- g) Vegetation complexes not meeting any of the above criteria

### 1.3 Geoscientific information

Rainfall (mm):	865
Evapotranspiration (mm):	729
Elevation (topographic contours) m:	24, 26, 30, 32, 34, 20
Geology:	Basal conglomerate overlain by dune quartz sand with heavy mineral concentrations 0.42 ha
Soils:	<p>Bassendean B1 Phase (212Bs__B1): Extremely low to very low relief dunes, undulating sandplain and discrete sand rises with deep bleached grey sands sometimes with a pale yellow B horizon or a weak iron-organic hardpan at depths generally greater than 2 m; banksia dominant. - 0.21 ha</p> <p>Bassendean B2 Phase (212Bs__B2): Flat to very gently undulating sandplain with well to moderately well drained deep bleached grey sands with a pale yellow B horizon or a weak iron-organic hardpan 1-2 m. - 0.19 ha</p> <p>Bassendean B3 Phase (212Bs__B3): Closed depressions and poorly defined stream channels with moderately deep, poorly to very poorly drained bleached sands with an iron-organic pan, or clay subsoil. Surfaces are dark grey sand or sandy loam. - 0.01 ha</p>

### 1.4 Other Considerations

Department of Aboriginal Affairs heritage sites: No

Time Constraints (please complete)

Funding (Y/N):

Seasonal (Y/N):

Hazard Reduction (Y/N):  
Other:

## 2 Assessment of clearing principles

### 2.1 Identified Potential Impacts Summary

Desktop assessment against clearing principles:

■ Likely to be at variance 
 ■ May be at variance 
 ■ Not likely to be at variance

Clearing Principle	Impact	Reason	Action Required
Principle (a) - High biodiversity	■	Principle (b) red impact. Principle (d) red impact. Principle (e) red impact. Assessment area is in an Environmentally Sensitive Area.	
Principle (b) - Significant habitat for fauna	■	Carnaby's cockatoo habitat. Specially Protected Fauna within 5km.	
Principle (c) - Habitat for rare flora	■	Declared Rare Flora within 5km.	Ground survey for vegetation condition and tree hollows in the application area may raise flag status.
Principle (d) - Habitat for TECs	■	Threatened Ecological Community (buffer) within application area.	
Principle (e) - Significant remnant in an extensively cleared area	■	Vegetation complexes with only 400 ha or 10% or less protected for conservation on the Swan Coastal Plain portion of Perth and Peel. Beard association less than 30% extent remaining within IBRA regions.	
Principle (f) - Growing in association with a watercourse or wetland	■		
Principle (g) - Likely to cause appreciable land degradation	■	Contains high to moderate potential of containing acid sulphate soils.	
Principle (h) - Impacts to conservation area	■	Within or directly adjacent to Bush Forever site Within or directly adjacent to	

Regional Park.

Principle (i) -  
Deterioration in the  
quality of surface or  
underground water



Application area:  
affects water dependent  
ecosystem (high potential or  
known).

The application area is  
within a RIWI, CAWSA  
or PDWSA area. Seek  
advice from the  
Department of Water.

The following section lists the data used to inform the assessment against clearing principles. Further information might be available for your application site in specific project reports or site specific assessments that you might like to attach to this desktop assessment.

## 2.1 Principle (a) Native vegetation should not be cleared if it comprises a high level of biological diversity

### Specially Protected Fauna

The following fauna record counts have been located within 5km of the application area:

Class	Status	No. records
BIRD	EN	150
INVERTEBRATE	P1	4
INVERTEBRATE	VU	1
BIRD	CR	15
BIRD	IA	297
MAMMAL	EN	3
BIRD	VU	16
REPTILE	P3	173
BIRD	P3	2
MAMMAL	P4	363
BIRD	P4	153
BIRD	OS	12
INVERTEBRATE	P3	1
MAMMAL	VU	1
INVERTEBRATE	P4	5

Key to conservation status ranking:

EX = Presumed Extinct

EN = Endangered

CR = Critically Endangered

VU = Vulnerable

P1-5 = Priority 1 to 5 fauna

### Priority Fauna

The following priority fauna records have been located within 5km of the application area:

SOURCE_ID	Class	WA_STATUS	Certainty	Distance (m)
68078	MAMMAL	P4	Certain	9
127121	MAMMAL	P4	Certain	10
89640	MAMMAL	P4	Very	105

			Certain (photo, specimen, expert)	
67850	MAMMAL	P4	Moderately certain	132
25050	MAMMAL	P4	Moderately certain	151
68034	MAMMAL	P4	Moderately certain	283
25049	MAMMAL	P4	Moderately certain	297
68064	MAMMAL	P4	Moderately certain	340
80068	MAMMAL	P4	Moderately certain	393
68249	MAMMAL	P4	Moderately certain	451
81090	MAMMAL	P4	Moderately certain	462
67815	MAMMAL	P4	Moderately certain	503
68403	MAMMAL	P4	Moderately certain	514
1045671	MAMMAL	P4	Not Sure	538
1045682	REPTILE	P3	Not Sure	538
68331	MAMMAL	P4	Moderately certain	629
80220	MAMMAL	P4	Moderately certain	629
81076	MAMMAL	P4	Moderately certain	673
1235939	MAMMAL	P4	Certain	711
19424	MAMMAL	P4	Certain	855
89658	MAMMAL	P4	Moderately certain	912
6521	MAMMAL	P4	Certain	929
99760 216	BIRD	P4	Moderately certain	936
68289	MAMMAL	P4	Moderately certain	1001
133869 216	BIRD	P4	Moderately certain	1022
89581	MAMMAL	P4	Very Certain (photo, specimen, expert)	1047



1071260	MAMMAL	P4	Not Sure	1174
5018313 216	BIRD	P4	Moderately certain	1196
167069 216	BIRD	P4	Moderately certain	1205
5009056 216	BIRD	P4	Moderately certain	1246
5009054 216	BIRD	P4	Moderately certain	1246
73668	MAMMAL	P4	Certain	1262
5027606 216	BIRD	P4	Moderately certain	1278
5029155 216	BIRD	P4	Moderately certain	1278
5035402 216	BIRD	P4	Moderately certain	1278
5037322 216	BIRD	P4	Moderately certain	1278
5056756 216	BIRD	P4	Moderately certain	1278
5074108 216	BIRD	P4	Moderately certain	1278
5074109 216	BIRD	P4	Moderately certain	1278
5118376 216	BIRD	P4	Moderately certain	1278
15005	REPTILE	P3	Certain	1289
15072	REPTILE	P3	Certain	1289
REPT:R60509	REPTILE	P3	WAM Vouchered	1289
REPT:R62011	REPTILE	P3	WAM Vouchered	1289
REPT:R62012	REPTILE	P3	WAM Vouchered	1289
REPT:R62013	REPTILE	P3	WAM Vouchered	1289
REPT:R62014	REPTILE	P3	WAM Vouchered	1289
REPT:R62015	REPTILE	P3	WAM Vouchered	1289
REPT:R62016	REPTILE	P3	WAM Vouchered	1289
REPT:R62017	REPTILE	P3	WAM Vouchered	1289
REPT:R62018	REPTILE	P3	WAM Vouchered	1289
REPT:R62019	REPTILE	P3	WAM	1289

			Vouchered	
REPT:R62020	REPTILE	P3	WAM	1289
			Vouchered	
REPT:R62021	REPTILE	P3	WAM	1289
			Vouchered	
REPT:R62022	REPTILE	P3	WAM	1289
			Vouchered	
REPT:R62023	REPTILE	P3	WAM	1289
			Vouchered	
REPT:R62024	REPTILE	P3	WAM	1289
			Vouchered	
REPT:R62025	REPTILE	P3	WAM	1289
			Vouchered	
REPT:R62026	REPTILE	P3	WAM	1289
			Vouchered	
REPT:R62027	REPTILE	P3	WAM	1289
			Vouchered	
REPT:R62028	REPTILE	P3	WAM	1289
			Vouchered	
REPT:R62029	REPTILE	P3	WAM	1289
			Vouchered	
REPT:R62030	REPTILE	P3	WAM	1289
			Vouchered	
REPT:R62031	REPTILE	P3	WAM	1289
			Vouchered	
REPT:R62032	REPTILE	P3	WAM	1289
			Vouchered	
REPT:R62033	REPTILE	P3	WAM	1289
			Vouchered	
REPT:R62034	REPTILE	P3	WAM	1289
			Vouchered	
REPT:R62035	REPTILE	P3	WAM	1289
			Vouchered	
REPT:R62036	REPTILE	P3	WAM	1289
			Vouchered	
REPT:R62037	REPTILE	P3	WAM	1289
			Vouchered	
REPT:R62038	REPTILE	P3	WAM	1289
			Vouchered	
REPT:R62039	REPTILE	P3	WAM	1289
			Vouchered	
REPT:R62040	REPTILE	P3	WAM	1289
			Vouchered	
REPT:R62041	REPTILE	P3	WAM	1289
			Vouchered	
REPT:R62042	REPTILE	P3	WAM	1289
			Vouchered	
REPT:R62043	REPTILE	P3	WAM	1289

			Vouchered	
REPT:R62044	REPTILE	P3	WAM	1289
			Vouchered	
REPT:R62045	REPTILE	P3	WAM	1289
			Vouchered	
REPT:R62046	REPTILE	P3	WAM	1289
			Vouchered	
REPT:R62047	REPTILE	P3	WAM	1289
			Vouchered	
REPT:R62048	REPTILE	P3	WAM	1289
			Vouchered	
REPT:R62049	REPTILE	P3	WAM	1289
			Vouchered	
REPT:R62050	REPTILE	P3	WAM	1289
			Vouchered	
REPT:R62051	REPTILE	P3	WAM	1289
			Vouchered	
REPT:R62052	REPTILE	P3	WAM	1289
			Vouchered	
REPT:R62053	REPTILE	P3	WAM	1289
			Vouchered	
REPT:R62054	REPTILE	P3	WAM	1289
			Vouchered	
REPT:R62055	REPTILE	P3	WAM	1289
			Vouchered	
REPT:R62056	REPTILE	P3	WAM	1289
			Vouchered	
REPT:R62057	REPTILE	P3	WAM	1289
			Vouchered	
REPT:R62058	REPTILE	P3	WAM	1289
			Vouchered	
REPT:R62059	REPTILE	P3	WAM	1289
			Vouchered	
REPT:R62060	REPTILE	P3	WAM	1289
			Vouchered	
REPT:R62061	REPTILE	P3	WAM	1289
			Vouchered	
REPT:R62062	REPTILE	P3	WAM	1289
			Vouchered	
REPT:R62063	REPTILE	P3	WAM	1289
			Vouchered	
REPT:R62064	REPTILE	P3	WAM	1289
			Vouchered	
REPT:R62065	REPTILE	P3	WAM	1289
			Vouchered	
REPT:R62066	REPTILE	P3	WAM	1289
			Vouchered	
REPT:R62067	REPTILE	P3	WAM	1289

			Vouchered	
REPT:R62068	REPTILE	P3	WAM	1289
			Vouchered	
REPT:R62069	REPTILE	P3	WAM	1289
			Vouchered	
REPT:R62070	REPTILE	P3	WAM	1289
			Vouchered	
REPT:R62071	REPTILE	P3	WAM	1289
			Vouchered	
REPT:R62072	REPTILE	P3	WAM	1289
			Vouchered	
REPT:R62073	REPTILE	P3	WAM	1289
			Vouchered	
REPT:R62074	REPTILE	P3	WAM	1289
			Vouchered	
REPT:R62075	REPTILE	P3	WAM	1289
			Vouchered	
REPT:R62076	REPTILE	P3	WAM	1289
			Vouchered	
REPT:R62077	REPTILE	P3	WAM	1289
			Vouchered	
REPT:R62078	REPTILE	P3	WAM	1289
			Vouchered	
REPT:R62079	REPTILE	P3	WAM	1289
			Vouchered	
REPT:R62080	REPTILE	P3	WAM	1289
			Vouchered	
REPT:R62081	REPTILE	P3	WAM	1289
			Vouchered	
REPT:R62082	REPTILE	P3	WAM	1289
			Vouchered	
REPT:R62083	REPTILE	P3	WAM	1289
			Vouchered	
REPT:R62084	REPTILE	P3	WAM	1289
			Vouchered	
REPT:R62085	REPTILE	P3	WAM	1289
			Vouchered	
REPT:R62086	REPTILE	P3	WAM	1289
			Vouchered	
REPT:R62087	REPTILE	P3	WAM	1289
			Vouchered	
REPT:R62088	REPTILE	P3	WAM	1289
			Vouchered	
REPT:R62089	REPTILE	P3	WAM	1289
			Vouchered	
REPT:R62090	REPTILE	P3	WAM	1289
			Vouchered	
REPT:R62091	REPTILE	P3	WAM	1289

			Vouchered	
REPT:R62092	REPTILE	P3	WAM	1289
			Vouchered	
REPT:R62093	REPTILE	P3	WAM	1289
			Vouchered	
REPT:R62094	REPTILE	P3	WAM	1289
			Vouchered	
REPT:R62095	REPTILE	P3	WAM	1289
			Vouchered	
REPT:R62692	REPTILE	P3	WAM	1289
			Vouchered	
REPT:R62693	REPTILE	P3	WAM	1289
			Vouchered	
REPT:R62694	REPTILE	P3	WAM	1289
			Vouchered	
REPT:R62695	REPTILE	P3	WAM	1289
			Vouchered	
REPT:R62696	REPTILE	P3	WAM	1289
			Vouchered	
REPT:R62697	REPTILE	P3	WAM	1289
			Vouchered	
REPT:R63041	REPTILE	P3	WAM	1289
			Vouchered	
REPT:R63042	REPTILE	P3	WAM	1289
			Vouchered	
REPT:R63043	REPTILE	P3	WAM	1289
			Vouchered	
REPT:R63044	REPTILE	P3	WAM	1289
			Vouchered	
REPT:R63045	REPTILE	P3	WAM	1289
			Vouchered	
REPT:R63046	REPTILE	P3	WAM	1289
			Vouchered	
REPT:R63047	REPTILE	P3	WAM	1289
			Vouchered	
REPT:R63048	REPTILE	P3	WAM	1289
			Vouchered	
REPT:R63049	REPTILE	P3	WAM	1289
			Vouchered	
REPT:R63050	REPTILE	P3	WAM	1289
			Vouchered	
REPT:R63051	REPTILE	P3	WAM	1289
			Vouchered	
REPT:R63052	REPTILE	P3	WAM	1289
			Vouchered	
REPT:R63053	REPTILE	P3	WAM	1289
			Vouchered	
REPT:R63054	REPTILE	P3	WAM	1289

			Vouchered	
REPT:R63055	REPTILE	P3	WAM Vouchered	1289
REPT:R63056	REPTILE	P3	WAM Vouchered	1289
REPT:R63057	REPTILE	P3	WAM Vouchered	1289
REPT:R63058	REPTILE	P3	WAM Vouchered	1289
REPT:R63059	REPTILE	P3	WAM Vouchered	1289
REPT:R63060	REPTILE	P3	WAM Vouchered	1289
REPT:R63061	REPTILE	P3	WAM Vouchered	1289
REPT:R63062	REPTILE	P3	WAM Vouchered	1289
REPT:R63063	REPTILE	P3	WAM Vouchered	1289
REPT:R63064	REPTILE	P3	WAM Vouchered	1289
REPT:R63065	REPTILE	P3	WAM Vouchered	1289
REPT:R63066	REPTILE	P3	WAM Vouchered	1289
REPT:R63067	REPTILE	P3	WAM Vouchered	1289
REPT:R63068	REPTILE	P3	WAM Vouchered	1289
REPT:R69844	REPTILE	P3	WAM Vouchered	1289
15114	REPTILE	P3	Certain	1289
15131	REPTILE	P3	Certain	1289
REPT:R60045	REPTILE	P3	WAM Vouchered	1289
REPT:R62158	REPTILE	P3	WAM Vouchered	1289
REPT:R62159	REPTILE	P3	WAM Vouchered	1289
6438 216	BIRD	P4	Moderately certain	1328
73666	MAMMAL	P4	Certain	1369
5009156 216	BIRD	P4	Moderately certain	1377
23228	MAMMAL	P4	Certain	1403
124683 216	BIRD	P4	Moderately certain	1418

67635	MAMMAL	P4	Moderately certain	1424
5056032 216	BIRD	P4	Moderately certain	1445
67954	MAMMAL	P4	Moderately certain	1445
5018314 216	BIRD	P4	Moderately certain	1456
5018318 216	BIRD	P4	Moderately certain	1456
5032199 216	BIRD	P4	Moderately certain	1456
5057657 216	BIRD	P4	Moderately certain	1456
5074574 216	BIRD	P4	Moderately certain	1456
5104348 216	BIRD	P4	Moderately certain	1456
5120580 216	BIRD	P4	Moderately certain	1456
124906 216	BIRD	P4	Moderately certain	1459
68378	MAMMAL	P4	Moderately certain	1484
10778 216	BIRD	P4	Moderately certain	1490
262071 216	BIRD	P4	Moderately certain	1490
80164	MAMMAL	P4	Moderately certain	1539
68251	MAMMAL	P4	Moderately certain	1540
262220 216	BIRD	P4	Moderately certain	1573
291097 216	BIRD	P4	Moderately certain	1574
80789	MAMMAL	P4	Moderately certain	1608
1230339	MAMMAL	P4	Moderately certain	1637
1230341	MAMMAL	P4	Moderately certain	1637
1230344	MAMMAL	P4	Moderately certain	1637
68394	MAMMAL	P4	Moderately certain	1673
5021681 216	BIRD	P4	Moderately certain	1686

5064472 216	BIRD	P4	Moderately certain	1686
5076731 216	BIRD	P4	Moderately certain	1686
5095956 216	BIRD	P4	Moderately certain	1686
67843	MAMMAL	P4	Moderately certain	1687
262317 216	BIRD	P4	Moderately certain	1720
122578 216	BIRD	P4	Moderately certain	1731
190796 216	BIRD	P4	Moderately certain	1731
1333534	MAMMAL	P4	Certain	1751
1333535	MAMMAL	P4	Certain	1751
1333537	MAMMAL	P4	Certain	1751
1333540	MAMMAL	P4	Certain	1751
5032298 216	BIRD	P4	Moderately certain	1761
5033908 216	BIRD	P4	Moderately certain	1761
68448	MAMMAL	P4	Moderately certain	1822
22880	MAMMAL	P4	Moderately certain	1828
56868	MAMMAL	P4	Certain	1856
56872	MAMMAL	P4	Certain	1856
56877	MAMMAL	P4	Certain	1856
67844	MAMMAL	P4	Moderately certain	1896
80163	MAMMAL	P4	Moderately certain	1919
135526 216	BIRD	P4	Moderately certain	1950
133870 216	BIRD	P4	Moderately certain	1961
8949	MAMMAL	P4	Certain	2012
8950	MAMMAL	P4	Certain	2012
5054235 216	BIRD	P4	Moderately certain	2031
8948	MAMMAL	P4	Moderately certain	2075
9339 216	BIRD	P4	Moderately certain	2082
16671	INVERTEBRATE	P4	Certain	2105



6471 216	BIRD	P4	Moderately certain	2110
5009745 216	BIRD	P4	Moderately certain	2110
5009748 216	BIRD	P4	Moderately certain	2110
5012753 216	BIRD	P4	Moderately certain	2110
5012751 216	BIRD	P4	Moderately certain	2110
5012272 216	BIRD	P4	Moderately certain	2110
5012264 216	BIRD	P4	Moderately certain	2110
5012254 216	BIRD	P4	Moderately certain	2110
5012253 216	BIRD	P4	Moderately certain	2110
5012252 216	BIRD	P4	Moderately certain	2110
5012251 216	BIRD	P4	Moderately certain	2110
5013575 216	BIRD	P4	Moderately certain	2110
5013862 216	BIRD	P4	Moderately certain	2110
5017167 216	BIRD	P4	Moderately certain	2110
5019076 216	BIRD	P4	Moderately certain	2110
5021668 216	BIRD	P4	Moderately certain	2110
5024623 216	BIRD	P4	Moderately certain	2110
5025811 216	BIRD	P4	Moderately certain	2110
5033311 216	BIRD	P4	Moderately certain	2110
5037588 216	BIRD	P4	Moderately certain	2110
5078386 216	BIRD	P4	Moderately certain	2110
5080154 216	BIRD	P4	Moderately certain	2110
5121722 216	BIRD	P4	Moderately certain	2110
5122165 216	BIRD	P4	Moderately certain	2110

68339	MAMMAL	P4	Moderately certain	2115
271013 216	BIRD	P4	Moderately certain	2123
487044 216	BIRD	P4	Moderately certain	2123
5009269 216	BIRD	P4	Moderately certain	2139
5009180 216	BIRD	P4	Moderately certain	2139
5009273 216	BIRD	P4	Moderately certain	2139
496658 216	BIRD	P4	Moderately certain	2141
74823	MAMMAL	P4	Moderately certain	2152
1168818	MAMMAL	P4	Certain	2169
1168819	MAMMAL	P4	Certain	2169
1168820	MAMMAL	P4	Certain	2169
1168821	MAMMAL	P4	Certain	2169
1168822	MAMMAL	P4	Certain	2169
1168823	MAMMAL	P4	Certain	2169
1168824	MAMMAL	P4	Certain	2169
1168825	MAMMAL	P4	Certain	2169
1168826	MAMMAL	P4	Certain	2169
1168827	MAMMAL	P4	Certain	2169
1168828	MAMMAL	P4	Certain	2169
1168829	MAMMAL	P4	Certain	2169
1168830	MAMMAL	P4	Certain	2169
1168831	MAMMAL	P4	Certain	2169
1168832	MAMMAL	P4	Certain	2169
1168833	MAMMAL	P4	Certain	2169
1168834	MAMMAL	P4	Certain	2169
1168835	MAMMAL	P4	Certain	2169
1168836	MAMMAL	P4	Certain	2169
1168837	MAMMAL	P4	Certain	2169
1168838	MAMMAL	P4	Certain	2169
1168839	MAMMAL	P4	Certain	2169
1168840	MAMMAL	P4	Certain	2169
1168841	MAMMAL	P4	Certain	2169
1168842	MAMMAL	P4	Certain	2169
1168843	MAMMAL	P4	Certain	2169
1168844	MAMMAL	P4	Certain	2169
1168845	MAMMAL	P4	Certain	2169

1168846	MAMMAL	P4	Certain	2169
1168847	MAMMAL	P4	Certain	2169
1168848	MAMMAL	P4	Certain	2169
1168849	MAMMAL	P4	Certain	2169
1168850	MAMMAL	P4	Certain	2169
1168851	MAMMAL	P4	Certain	2169
1168852	MAMMAL	P4	Certain	2169
1168853	MAMMAL	P4	Certain	2169
1168854	MAMMAL	P4	Certain	2169
1168855	MAMMAL	P4	Certain	2169
1168856	MAMMAL	P4	Certain	2169
1168857	MAMMAL	P4	Certain	2169
1168858	MAMMAL	P4	Certain	2169
1168859	MAMMAL	P4	Certain	2169
1168860	MAMMAL	P4	Certain	2169
1168861	MAMMAL	P4	Certain	2169
1168862	MAMMAL	P4	Certain	2169
1168863	MAMMAL	P4	Certain	2169
1168864	MAMMAL	P4	Certain	2169
1168865	MAMMAL	P4	Certain	2169
1168866	MAMMAL	P4	Certain	2169
1168867	MAMMAL	P4	Certain	2169
1168868	MAMMAL	P4	Certain	2169
1168869	MAMMAL	P4	Certain	2169
1168870	MAMMAL	P4	Certain	2169
1168871	MAMMAL	P4	Certain	2169
1168872	MAMMAL	P4	Certain	2169
1168873	MAMMAL	P4	Certain	2169
1168874	MAMMAL	P4	Certain	2169
1168875	MAMMAL	P4	Certain	2169
1168876	MAMMAL	P4	Certain	2169
1168897	MAMMAL	P4	Certain	2169
1168877	MAMMAL	P4	Certain	2169
1168878	MAMMAL	P4	Certain	2169
1168879	MAMMAL	P4	Certain	2169
1168880	MAMMAL	P4	Certain	2169
1168881	MAMMAL	P4	Certain	2169
1168882	MAMMAL	P4	Certain	2169
1168883	MAMMAL	P4	Certain	2169
1168884	MAMMAL	P4	Certain	2169
1168885	MAMMAL	P4	Certain	2169
1168886	MAMMAL	P4	Certain	2169

1168887	MAMMAL	P4	Certain	2169
1168888	MAMMAL	P4	Certain	2169
1168889	MAMMAL	P4	Certain	2169
1168890	MAMMAL	P4	Certain	2169
1168891	MAMMAL	P4	Certain	2169
1168892	MAMMAL	P4	Certain	2169
1168893	MAMMAL	P4	Certain	2169
1168894	MAMMAL	P4	Certain	2169
1168895	MAMMAL	P4	Certain	2169
1168896	MAMMAL	P4	Certain	2169
1168903	REPTILE	P3	Certain	2169
1168904	REPTILE	P3	Certain	2169
1168905	REPTILE	P3	Certain	2169
1168906	REPTILE	P3	Certain	2169
1168907	REPTILE	P3	Certain	2169
1168908	REPTILE	P3	Certain	2169
1168909	REPTILE	P3	Certain	2169
1168910	REPTILE	P3	Certain	2169
1168911	REPTILE	P3	Certain	2169
1168912	REPTILE	P3	Certain	2169
1168918	REPTILE	P3	Certain	2169
1168913	REPTILE	P3	Certain	2169
1168914	REPTILE	P3	Certain	2169
1168915	REPTILE	P3	Certain	2169
1168916	REPTILE	P3	Certain	2169
1168917	REPTILE	P3	Certain	2169
267973 216	BIRD	P4	Moderately certain	2185
5090895 216	BIRD	P4	Moderately certain	2219
5093193 216	BIRD	P4	Moderately certain	2219
5094542 216	BIRD	P4	Moderately certain	2219
5120193 216	BIRD	P4	Moderately certain	2219
5120908 216	BIRD	P4	Moderately certain	2219
5122246 216	BIRD	P4	Moderately certain	2219
5122600 216	BIRD	P4	Moderately certain	2219
5061694 216	BIRD	P4	Moderately certain	2228

5083694 216	BIRD	P4	Moderately certain	2228
5104314 216	BIRD	P4	Moderately certain	2228
10464	MAMMAL	P4	Certain	2236
MAMM:M57975	MAMMAL	P4	WAM Vouchered	2236
REPT:R108486	REPTILE	P3	WAM Vouchered	2236
REPT:R108487	REPTILE	P3	WAM Vouchered	2236
REPT:R108485	REPTILE	P3	WAM Vouchered	2236
80063	MAMMAL	P4	Certain	2251
8796 216	BIRD	P4	Moderately certain	2256
68248	MAMMAL	P4	Moderately certain	2261
5033310 216	BIRD	P4	Moderately certain	2274
38707	MAMMAL	P4	Certain	2275
38751	MAMMAL	P4	Certain	2275
38752	MAMMAL	P4	Certain	2275
38799	MAMMAL	P4	Certain	2275
38800	MAMMAL	P4	Certain	2275
38802	MAMMAL	P4	Certain	2275
38806	MAMMAL	P4	Certain	2275
38867	MAMMAL	P4	Certain	2275
38869	MAMMAL	P4	Certain	2275
38871	MAMMAL	P4	Certain	2275
38923	MAMMAL	P4	Certain	2275
38926	MAMMAL	P4	Certain	2275
38931	MAMMAL	P4	Certain	2275
38995	MAMMAL	P4	Certain	2275
38996	MAMMAL	P4	Certain	2275
39000	MAMMAL	P4	Certain	2275
39002	MAMMAL	P4	Certain	2275
39003	MAMMAL	P4	Certain	2275
39069	MAMMAL	P4	Certain	2275
38706	REPTILE	P3	Certain	2275
38749	REPTILE	P3	Certain	2275
38807	REPTILE	P3	Certain	2275
38808	REPTILE	P3	Certain	2275
39061	REPTILE	P3	Certain	2275

39063	REPTILE	P3	Certain	2275
6401 216	BIRD	P4	Moderately certain	2306
SWAN COASTAL PLAIN WATERBIRDS SCBARL 31-JUL-90 A GROUND BBDU	BIRD	P4		2320
SWAN COASTAL PLAIN WATERBIRDS SCBARL 01-OCT-90 A GROUND BBDU	BIRD	P4		2320
SWAN COASTAL PLAIN WATERBIRDS SCBARL 14-APR-90 A GROUND BBDU	BIRD	P4		2320
SWAN COASTAL PLAIN WATERBIRDS SCBARL 01-JAN-91 A GROUND BBDU	BIRD	P4		2320
SWAN COASTAL PLAIN WATERBIRDS SCBARL 05-JUL-91 A GROUND BBDU	BIRD	P4		2320
SWAN COASTAL PLAIN WATERBIRDS SCBARL 01-APR-91 A GROUND BBDU	BIRD	P4		2320
SWAN COASTAL PLAIN WATERBIRDS SCBARL 11-JAN-92 A GROUND BBDU	BIRD	P4		2320
612727	MAMMAL	P4	Not Sure	2344
73658	MAMMAL	P4	Certain	2351
3605	MAMMAL	P4	Certain	2376
22925	MAMMAL	P4	Certain	2381
105790	MAMMAL	P4	Certain	2421
424005	MAMMAL	P4	Certain	2432
97706	MAMMAL	P4	Certain	2494
6323	INVERTEBRATE	P1	Certain	2497
6324	INVERTEBRATE	P1	Certain	2497
6325	INVERTEBRATE	P1	Certain	2497
67659	MAMMAL	P4	Moderately certain	2503
80594	MAMMAL	P4	Certain	2524
19352	MAMMAL	P4	Certain	2553
1217115	MAMMAL	P4	Certain	2558
1217116	MAMMAL	P4	Certain	2558
122724 216	BIRD	P4	Moderately certain	2565
5009153 216	BIRD	P4	Moderately certain	2565
5009155 216	BIRD	P4	Moderately certain	2565
97107	MAMMAL	P4	Certain	2569

122572 216	BIRD	P4	Moderately certain	2578
5129627 216	BIRD	P4	Moderately certain	2595
3419	MAMMAL	P4	Certain	2596
298615	MAMMAL	P4	Certain	2605
298616	MAMMAL	P4	Certain	2605
431741	MAMMAL	P4	Certain	2614
38814	MAMMAL	P4	Certain	2618
38817	MAMMAL	P4	Certain	2618
38820	MAMMAL	P4	Certain	2618
38884	MAMMAL	P4	Certain	2618
38937	MAMMAL	P4	Certain	2618
38721	REPTILE	P3	Certain	2618
38760	REPTILE	P3	Certain	2618
38822	REPTILE	P3	Certain	2618
38934	REPTILE	P3	Certain	2618
39017	REPTILE	P3	Certain	2618
Lerista lineata 115.867744 - 32.161446 18/11/2017	REPTILE	P3		2618
80606	MAMMAL	P4	Certain	2640
1282624	MAMMAL	P4	Certain	2707
1282625	MAMMAL	P4	Certain	2707
68032	MAMMAL	P4	Moderately certain	2716
67849	MAMMAL	P4	Moderately certain	2725
67651	MAMMAL	P4	Moderately certain	2729
76190	MAMMAL	P4	Moderately certain	2745
68391	MAMMAL	P4	Certain	2746
195543	MAMMAL	P4	Certain	2752
68189	MAMMAL	P4	Moderately certain	2786
6657	INVERTEBRATE	P1	Certain	2830
68111	MAMMAL	P4	Moderately certain	2833
38713	MAMMAL	P4	Certain	2837
38813	MAMMAL	P4	Certain	2837
38874	MAMMAL	P4	Certain	2837
38877	MAMMAL	P4	Certain	2837
38881	MAMMAL	P4	Certain	2837
39014	MAMMAL	P4	Certain	2837

39016	MAMMAL	P4	Certain	2837
39074	MAMMAL	P4	Certain	2837
67607	MAMMAL	P4	Moderately certain	2888
6308 216	BIRD	P4	Moderately certain	2897
547118	MAMMAL	P4	Not defined	2953
449713 216	BIRD	P4	Moderately certain	2972
67743	MAMMAL	P4	Moderately certain	3010
89601	MAMMAL	P4	Moderately certain	3025
67907	MAMMAL	P4	Certain	3127
80283	MAMMAL	P4	Moderately certain	3127
24956	MAMMAL	P4	Moderately certain	3131
81024	MAMMAL	P4	Moderately certain	3131
6400 216	BIRD	P4	Moderately certain	3174
19085	MAMMAL	P4	Certain	3221
73660	MAMMAL	P4	Certain	3256
89588	MAMMAL	P4	Very Certain (photo, specimen, expert)	3280
199041 216	BIRD	P4	Moderately certain	3283
80309	MAMMAL	P4	Moderately certain	3309
68179	MAMMAL	P4	Moderately certain	3309
11355	MAMMAL	P4	Certain	3350
68057	MAMMAL	P4	Moderately certain	3354
124905 216	BIRD	P4	Moderately certain	3386
96167	MAMMAL	P4	Certain	3389
96169	MAMMAL	P4	Certain	3389
80191	MAMMAL	P4	Moderately certain	3409
80165	MAMMAL	P4	Moderately certain	3448
911160	MAMMAL	P4	Certain	3454



68129	MAMMAL	P4	Moderately certain	3467
67822	MAMMAL	P4	Certain	3520
80282	MAMMAL	P4	Moderately certain	3520
REPT:R112879	REPTILE	P3	WAM Vouchered	3530
REPT:R112880	REPTILE	P3	WAM Vouchered	3530
67914	MAMMAL	P4	Moderately certain	3551
67976	MAMMAL	P4	Certain	3562
68495	MAMMAL	P4	Moderately certain	3567
MAMM:M10305	MAMMAL	P4	WAM Vouchered	3589
1029576	MAMMAL	P4	Not Sure	3625
67866	MAMMAL	P4	Certain	3634
80219	MAMMAL	P4	Moderately certain	3634
68539	MAMMAL	P4	Certain	3662
67777	MAMMAL	P4	Moderately certain	3672
22928	MAMMAL	P4	Certain	3679
22256	MAMMAL	P4	Moderately certain	3699
68054	MAMMAL	P4	Moderately certain	3709
67786	MAMMAL	P4	Moderately certain	3758
19212	MAMMAL	P4	Certain	3783
1268186	REPTILE	P3	Certain	3804
22938	MAMMAL	P4	Certain	3877
68295	MAMMAL	P4	Moderately certain	3922
74813	MAMMAL	P4	Moderately certain	3951
79968	MAMMAL	P4	Moderately certain	3956
23429	MAMMAL	P4	Moderately certain	3999
91	MAMMAL	P4	Moderately certain	4028
101224	MAMMAL	P4	Certain	4033
101225	MAMMAL	P4	Certain	4033
101226	MAMMAL	P4	Certain	4033

1168664	MAMMAL	P4	Certain	4051
1168665	MAMMAL	P4	Certain	4051
1168666	MAMMAL	P4	Certain	4051
1168667	MAMMAL	P4	Certain	4051
1168668	MAMMAL	P4	Certain	4051
1168669	MAMMAL	P4	Certain	4051
1168670	MAMMAL	P4	Certain	4051
1168671	MAMMAL	P4	Certain	4051
1168678	MAMMAL	P4	Certain	4051
1168672	MAMMAL	P4	Certain	4051
1168673	MAMMAL	P4	Certain	4051
1168674	MAMMAL	P4	Certain	4051
1168675	MAMMAL	P4	Certain	4051
1168676	MAMMAL	P4	Certain	4051
1168677	MAMMAL	P4	Certain	4051
1323726	MAMMAL	P4	Certain	4131
1323730	MAMMAL	P4	Certain	4131
1323734	MAMMAL	P4	Certain	4131
1323738	MAMMAL	P4	Certain	4131
75574	MAMMAL	P4	Moderately certain	4155
MAMM:M40709	MAMMAL	P4	WAM Vouchered	4172
10469	BIRD	P3	Certain	4172
AVIF:35617	BIRD	P3	WAM Vouchered	4172
65178 216	BIRD	P4	Moderately certain	4204
67947	MAMMAL	P4	Moderately certain	4205
68265	MAMMAL	P4	Moderately certain	4211
1399	MAMMAL	P4	Certain	4218
67727	MAMMAL	P4	Certain	4254
936686	MAMMAL	P4	Certain	4262
3678	MAMMAL	P4	Certain	4306
101227	MAMMAL	P4	Certain	4335
101228	MAMMAL	P4	Certain	4335
92933	MAMMAL	P4	Very Certain (photo, specimen, expert)	4335
181215	MAMMAL	P4	Certain	4346
181229	MAMMAL	P4	Certain	4346

193788	INVERTEBRATE	P4	Certain	4356
68092	MAMMAL	P4	Moderately certain	4368
92733	BIRD	P4	Very Certain (photo, specimen, expert)	4370
92751	BIRD	P4	Very Certain (photo, specimen, expert)	4370
92752	BIRD	P4	Very Certain (photo, specimen, expert)	4370
92753	BIRD	P4	Very Certain (photo, specimen, expert)	4370
7013	MAMMAL	P4	Certain	4375
15011	REPTILE	P3	Certain	4375
15098	REPTILE	P3	Certain	4375
REPT:R144983	REPTILE	P3	WAM Vouchered	4375
REPT:R146846	REPTILE	P3	WAM Vouchered	4375
7012	MAMMAL	P4	Certain	4375
67828	MAMMAL	P4	Moderately certain	4376
79984	MAMMAL	P4	Moderately certain	4420
67784	MAMMAL	P4	Moderately certain	4435
68316	MAMMAL	P4	Moderately certain	4452
243758	MAMMAL	P4	Certain	4467
243754	MAMMAL	P4	Certain	4467
243748	MAMMAL	P4	Certain	4467
243744	MAMMAL	P4	Certain	4467
243727	MAMMAL	P4	Certain	4467
243728	MAMMAL	P4	Certain	4467
243698	MAMMAL	P4	Certain	4467
243686	MAMMAL	P4	Certain	4467
243687	MAMMAL	P4	Certain	4467

243678	MAMMAL	P4	Certain	4467
243050	REPTILE	P3	Certain	4467
15086	REPTILE	P3	Certain	4477
15061	REPTILE	P3	Certain	4490
3255	MAMMAL	P4	Certain	4491
1268187	REPTILE	P3	Certain	4520
68007	MAMMAL	P4	Moderately certain	4524
67601	MAMMAL	P4	Moderately certain	4532
936684	MAMMAL	P4	Certain	4544
911181	MAMMAL	P4	Certain	4550
674	MAMMAL	P4	Certain	4555
20302	MAMMAL	P4	Moderately certain	4582
89579	MAMMAL	P4	Very Certain (photo, specimen, expert)	4589
431377 216	BIRD	P4	Moderately certain	4594
4017	MAMMAL	P4	Certain	4598
18506 216	BIRD	P4	Moderately certain	4620
99317	INVERTEBRATE	P3	Certain	4634
MAMM:M42313	MAMMAL	P4	WAM Vouchered	4634
5058548 216	BIRD	P4	Moderately certain	4634
73662	MAMMAL	P4	Certain	4650
1230659	MAMMAL	P4	Certain	4653
85	MAMMAL	P4	Certain	4666
18547	MAMMAL	P4	Certain	4668
73653	MAMMAL	P4	Certain	4668
184303	INVERTEBRATE	P4	Certain	4673
936685	MAMMAL	P4	Certain	4679
67745	MAMMAL	P4	Moderately certain	4684
4018	MAMMAL	P4	Certain	4684
426576	MAMMAL	P4	Certain	4691
4019	MAMMAL	P4	Certain	4695
67845	MAMMAL	P4	Moderately certain	4696
67766	MAMMAL	P4	Moderately certain	4707

80162	MAMMAL	P4	Moderately certain	4719
4020	MAMMAL	P4	Certain	4740
68284	MAMMAL	P4	Moderately certain	4745
184302	INVERTEBRATE	P4	Certain	4764
186348	MAMMAL	P4	Certain	4776
89660	MAMMAL	P4	Moderately certain	4780
68203	MAMMAL	P4	Moderately certain	4787
761429 216	BIRD	P4	Moderately certain	4791
SWAN COASTAL PLAIN WATERBIRDS SCTHOL 20- OCT-91 A GROUND BBDU	BIRD	P4		4792
SWAN COASTAL PLAIN WATERBIRDS SCTHOL 13- JAN-92 A GROUND BBDU	BIRD	P4		4792
10718	MAMMAL	P4	Certain	4795
10719	MAMMAL	P4	Certain	4795
10720	MAMMAL	P4	Certain	4795
68369	MAMMAL	P4	Certain	4801
4016	MAMMAL	P4	Certain	4812
5099181 216	BIRD	P4	Moderately certain	4822
67909	MAMMAL	P4	Certain	4831
81020	MAMMAL	P4	Moderately certain	4834
911179	MAMMAL	P4	Certain	4834
67663	MAMMAL	P4	Certain	4844
8759 216	BIRD	P4	Moderately certain	4852
1168546	MAMMAL	P4	Certain	4856
1168547	MAMMAL	P4	Certain	4856
1168548	MAMMAL	P4	Certain	4856
1168549	MAMMAL	P4	Certain	4856
1168550	MAMMAL	P4	Certain	4856
1168551	MAMMAL	P4	Certain	4856
1168622	MAMMAL	P4	Certain	4856
1168623	MAMMAL	P4	Certain	4856
1168624	MAMMAL	P4	Certain	4856
1168552	MAMMAL	P4	Certain	4856
1168553	MAMMAL	P4	Certain	4856
1168554	MAMMAL	P4	Certain	4856

1168555	MAMMAL	P4	Certain	4856
1168556	MAMMAL	P4	Certain	4856
1168557	MAMMAL	P4	Certain	4856
1168558	MAMMAL	P4	Certain	4856
1168559	MAMMAL	P4	Certain	4856
1168560	MAMMAL	P4	Certain	4856
1168582	MAMMAL	P4	Certain	4856
1168583	MAMMAL	P4	Certain	4856
38667 216	BIRD	P4	Moderately certain	4879
186364	MAMMAL	P4	Certain	4897
270956 216	BIRD	P4	Moderately certain	4902
289367 216	BIRD	P4	Moderately certain	4902
410312 216	BIRD	P4	Moderately certain	4902
423316 216	BIRD	P4	Moderately certain	4902
423317 216	BIRD	P4	Moderately certain	4902
439400 216	BIRD	P4	Moderately certain	4902
455506 216	BIRD	P4	Moderately certain	4902
462171 216	BIRD	P4	Moderately certain	4902
462172 216	BIRD	P4	Moderately certain	4902
462173 216	BIRD	P4	Moderately certain	4902
462174 216	BIRD	P4	Moderately certain	4902
462176 216	BIRD	P4	Moderately certain	4902
5001813 216	BIRD	P4	Moderately certain	4902
462177 216	BIRD	P4	Moderately certain	4902
462178 216	BIRD	P4	Moderately certain	4902
487145 216	BIRD	P4	Moderately certain	4902
487147 216	BIRD	P4	Moderately certain	4902
487148 216	BIRD	P4	Moderately certain	4902

487149 216	BIRD	P4	Moderately certain	4902
487151 216	BIRD	P4	Moderately certain	4902
489924 216	BIRD	P4	Moderately certain	4902
761417 216	BIRD	P4	Moderately certain	4902
761419 216	BIRD	P4	Moderately certain	4902
761420 216	BIRD	P4	Moderately certain	4902
761421 216	BIRD	P4	Moderately certain	4902
770914 216	BIRD	P4	Moderately certain	4902
770913 216	BIRD	P4	Moderately certain	4902
67965	MAMMAL	P4	Certain	4903
143759	MAMMAL	P4	Certain	4904
18548	MAMMAL	P4	Certain	4905
12169	REPTILE	P3	Certain	4907
REPT:R73443	REPTILE	P3	WAM Vouchered	4914
184301	INVERTEBRATE	P4	Certain	4925
8745 216	BIRD	P4	Moderately certain	4930
68266	MAMMAL	P4	Moderately certain	4933
38584 216	BIRD	P4	Moderately certain	4942
38747 216	BIRD	P4	Moderately certain	4942
68351	MAMMAL	P4	Moderately certain	4944
10993	BIRD	P4	Certain	4945
67627	MAMMAL	P4	Certain	4963
4021	MAMMAL	P4	Certain	4965
4025	MAMMAL	P4	Certain	4968
Macropus irma   06/06/2017.7	MAMMAL	P4		4972
190524 216	BIRD	P4	Moderately certain	4972
262304 216	BIRD	P4	Moderately certain	4972
283885 216	BIRD	P4	Moderately certain	4972

289439 216	BIRD	P4	Moderately certain	4972
4022	MAMMAL	P4	Certain	4978
97520	MAMMAL	P4	Certain	4986
97521	MAMMAL	P4	Very Certain (photo, specimen, expert)	4986

**Specially Protected Flora**

The following flora record counts have been located within 5km of the application area:

ConsStatus	WARank	No. records
Priority 4		14
-	CR	10

Key to the Conservation Status:

CR - Critically Endangered

EN - Endangered

VU - Vulnerable

1 = Priority 1: Poorly Known Taxa

2 = Priority 2: Poorly Known Taxa

3 = Priority 3: Poorly Known Taxa

4 = Priority 4: Rare Taxa

**Priority Flora**

The following priority flora records have been located within 5km of the application area:

Popn Id	Priority	Proximity (m)
99184	Priority 4	1307
99183	Priority 4	1314
99185	Priority 4	1443
99191	Priority 4	2001
99190	Priority 4	2206
99186	Priority 4	2241
99189	Priority 4	2606
99193	Priority 4	2612
99192	Priority 4	3004
99194	Priority 4	3229
87266	Priority 4	3498
99187	Priority 4	3576
93725	Priority 4	3843
92664	Priority 4	4613

**Threatened Ecological Communities**

The following threatened ecological community records have been located within 5km of the application area:

Ranking	Count
---------	-------



Priority 3 876

### Priority Ecological Communities

The following priority ecological community records have been located within 5km of the application area:

Record ID	Ranking	Proximity (m)
2650	Priority 3	0
2644	Priority 3	4879

### Apiary Sites

The following apiary site records have been located within 5km of the application area:

### Environmentally Sensitive Area

Area of site within Environmentally Sensitive Area (ha):0.10

**2.2 Principle (b) Native vegetation should not be cleared if it comprises the whole or part of, or is necessary for the maintenance of, a significant habitat for fauna indigenous to Western Australia.**

### Legend

Threatened and Priority Fauna

Local Government Authority

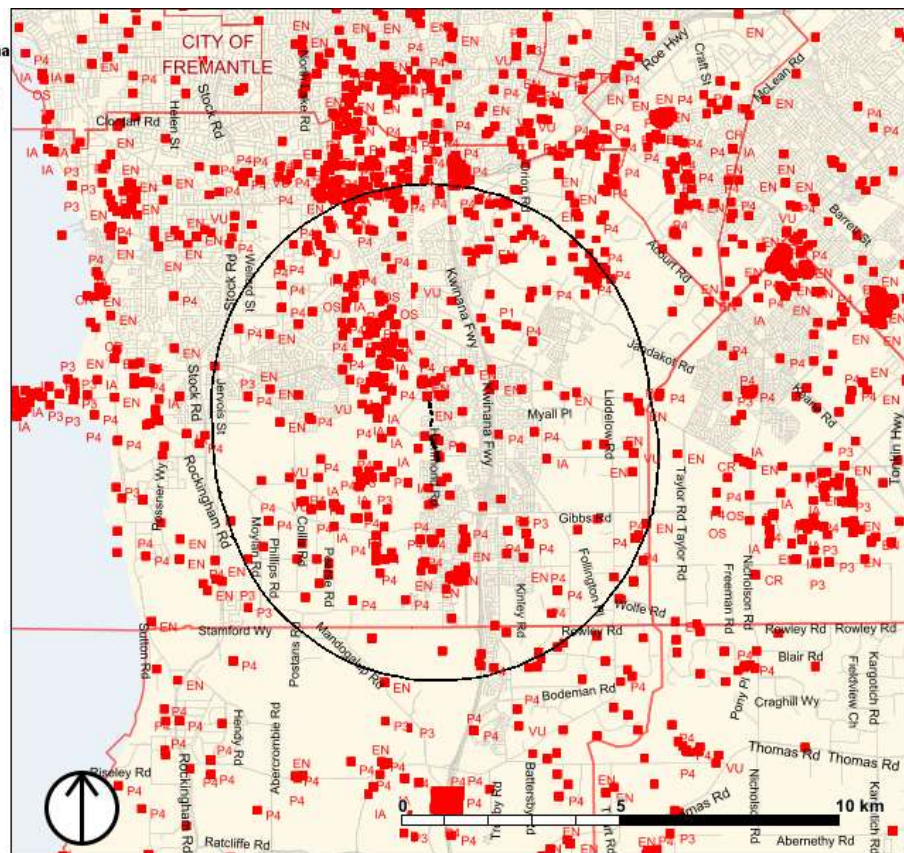
State Roads

Other Roads

Coast and Sea

water

land



### Carnaby's Cockatoo Habitat

The site contains 0.01ha of potential feeding areas.

The site contains 0.42ha of confirmed roosting areas.

### Specially Protected Fauna

The following fauna records have been located within 5km of the application area:

SOURCE_ID	Class	WA_STATUS	Certainty	Distance (m)
20036	BIRD	EN	Moderately certain	145
20037	BIRD	EN	Moderately certain	145
20038	BIRD	EN	Moderately certain	145
24046	BIRD	EN	Certain	145
24047	BIRD	EN	Certain	145
24048	BIRD	EN	Certain	145
24049	BIRD	EN	Certain	145
24050	BIRD	EN	Certain	145
24051	BIRD	EN	Certain	145
24052	BIRD	EN	Certain	145
26248	BIRD	EN	Certain	156
20057	BIRD	EN	Moderately certain	471
20058	BIRD	EN	Moderately certain	471
20059	BIRD	EN	Moderately certain	471
20060	BIRD	EN	Moderately certain	471
20061	BIRD	EN	Moderately certain	471
24053	BIRD	EN	Certain	471
23630	BIRD	EN	Certain	534
34324	BIRD	EN	Certain	536
5095960 178	BIRD	IA	Moderately certain	874
5095960 158	BIRD	IA	Moderately certain	874
23638	BIRD	EN	Certain	879
80782 178	BIRD	IA	Moderately certain	926
58450 178	BIRD	IA	Moderately certain	936
58450 154	BIRD	IA	Moderately certain	936
2050 162	BIRD	IA	Moderately certain	1116
58249 178	BIRD	IA	Moderately certain	1116

2050 158	BIRD	IA	Moderately certain	1116
58249 158	BIRD	IA	Moderately certain	1116
295102 178	BIRD	IA	Moderately certain	1140
5018527 237	BIRD	OS	Moderately certain	1142
5018527 178	BIRD	IA	Moderately certain	1142
5019085 178	BIRD	IA	Moderately certain	1142
262076 978	BIRD	IA	Moderately certain	1162
262315 162	BIRD	IA	Moderately certain	1162
423314 162	BIRD	IA	Moderately certain	1162
262314 178	BIRD	IA	Moderately certain	1162
262315 178	BIRD	IA	Moderately certain	1162
262076 178	BIRD	IA	Moderately certain	1162
289443 178	BIRD	IA	Moderately certain	1162
262315 154	BIRD	IA	Moderately certain	1162
262076 154	BIRD	IA	Moderately certain	1162
423313 154	BIRD	IA	Moderately certain	1162
262314 158	BIRD	IA	Moderately certain	1162
262315 158	BIRD	IA	Moderately certain	1162
262076 158	BIRD	IA	Moderately certain	1162
262316 158	BIRD	IA	Moderately certain	1162
289443 158	BIRD	IA	Moderately certain	1162
289444 158	BIRD	IA	Moderately certain	1162
423313 158	BIRD	IA	Moderately certain	1162
423314 158	BIRD	IA	Moderately certain	1162

7968	MAMMAL	EN	Certain	1181
5021683 794	BIRD	EN	Moderately certain	1196
5077498 794	BIRD	EN	Moderately certain	1196
5121716 237	BIRD	OS	Moderately certain	1196
5059512 154	BIRD	IA	Moderately certain	1196
5022209 158	BIRD	IA	Moderately certain	1196
30844	BIRD	EN	Certain	1211
14187 158	BIRD	IA	Moderately certain	1216
479874 178	BIRD	IA	Moderately certain	1239
142101 161	BIRD	CR	Moderately certain	1255
142101 965	BIRD	IA	Moderately certain	1255
142101 154	BIRD	IA	Moderately certain	1255
142101 158	BIRD	IA	Moderately certain	1255
5121951 158	BIRD	IA	Moderately certain	1265
5056756 163	BIRD	IA	Moderately certain	1278
5057959 163	BIRD	IA	Moderately certain	1278
5076373 163	BIRD	IA	Moderately certain	1278
5076373 978	BIRD	IA	Moderately certain	1278
5057959 162	BIRD	IA	Moderately certain	1278
5023428 794	BIRD	EN	Moderately certain	1278
5056755 794	BIRD	EN	Moderately certain	1278
5056756 794	BIRD	EN	Moderately certain	1278
5056755 178	BIRD	IA	Moderately certain	1278
5056756 178	BIRD	IA	Moderately certain	1278
5075276 178	BIRD	IA	Moderately certain	1278

5076373 178	BIRD	IA	Moderately certain	1278
5038221 154	BIRD	IA	Moderately certain	1278
5056756 154	BIRD	IA	Moderately certain	1278
5057959 154	BIRD	IA	Moderately certain	1278
5076373 154	BIRD	IA	Moderately certain	1278
5038221 158	BIRD	IA	Moderately certain	1278
5056756 158	BIRD	IA	Moderately certain	1278
5057959 158	BIRD	IA	Moderately certain	1278
5059935 158	BIRD	IA	Moderately certain	1278
5075276 158	BIRD	IA	Moderately certain	1278
5076373 158	BIRD	IA	Moderately certain	1278
5098615 158	BIRD	IA	Moderately certain	1278
5118376 158	BIRD	IA	Moderately certain	1278
5057959 159	BIRD	IA	Moderately certain	1278
5076373 159	BIRD	IA	Moderately certain	1278
131884 178	BIRD	IA	Moderately certain	1285
131884 154	BIRD	IA	Moderately certain	1285
131884 158	BIRD	IA	Moderately certain	1285
6438 851	BIRD	IA	Moderately certain	1328
268010 163	BIRD	IA	Moderately certain	1335
268010 162	BIRD	IA	Moderately certain	1335
268010 965	BIRD	IA	Moderately certain	1335
268010 158	BIRD	IA	Moderately certain	1335
262219 178	BIRD	IA	Moderately certain	1357

262219 154	BIRD	IA	Moderately certain	1357
262219 158	BIRD	IA	Moderately certain	1357
89314	BIRD	EN	Very Certain (photo, specimen, expert)	1426
5057648 163	BIRD	IA	Moderately certain	1456
5058587 163	BIRD	IA	Moderately certain	1456
5058587 162	BIRD	IA	Moderately certain	1456
5058587 965	BIRD	IA	Moderately certain	1456
5058587 794	BIRD	EN	Moderately certain	1456
5057657 178	BIRD	IA	Moderately certain	1456
5076732 178	BIRD	IA	Moderately certain	1456
5076730 178	BIRD	IA	Moderately certain	1456
5099200 178	BIRD	IA	Moderately certain	1456
5104348 178	BIRD	IA	Moderately certain	1456
5108616 178	BIRD	IA	Moderately certain	1456
5120489 178	BIRD	IA	Moderately certain	1456
5120499 178	BIRD	IA	Moderately certain	1456
5039977 154	BIRD	IA	Moderately certain	1456
5057657 154	BIRD	IA	Moderately certain	1456
5057648 154	BIRD	IA	Moderately certain	1456
5077500 154	BIRD	IA	Moderately certain	1456
5120499 154	BIRD	IA	Moderately certain	1456
5013483 158	BIRD	IA	Moderately certain	1456
5022060 158	BIRD	IA	Moderately	1456

			certain	
5022208 158	BIRD	IA	Moderately certain	1456
5037393 158	BIRD	IA	Moderately certain	1456
5039977 158	BIRD	IA	Moderately certain	1456
5057657 158	BIRD	IA	Moderately certain	1456
5057648 158	BIRD	IA	Moderately certain	1456
5058587 158	BIRD	IA	Moderately certain	1456
5058585 158	BIRD	IA	Moderately certain	1456
5076734 158	BIRD	IA	Moderately certain	1456
5076732 158	BIRD	IA	Moderately certain	1456
5076730 158	BIRD	IA	Moderately certain	1456
5077500 158	BIRD	IA	Moderately certain	1456
5099216 158	BIRD	IA	Moderately certain	1456
5099200 158	BIRD	IA	Moderately certain	1456
5104348 158	BIRD	IA	Moderately certain	1456
5104332 158	BIRD	IA	Moderately certain	1456
5013471 159	BIRD	IA	Moderately certain	1456
5057657 159	BIRD	IA	Moderately certain	1456
5057648 159	BIRD	IA	Moderately certain	1456
5058587 159	BIRD	IA	Moderately certain	1456
5076734 159	BIRD	IA	Moderately certain	1456
5076732 159	BIRD	IA	Moderately certain	1456
5076730 159	BIRD	IA	Moderately certain	1456
5077500 159	BIRD	IA	Moderately certain	1456
63379 178	BIRD	IA	Moderately	1479

63379 154	BIRD	IA	certain Moderately certain	1479
8744 158	BIRD	IA	Moderately certain	1479
63379 158	BIRD	IA	Moderately certain	1479
10778 162	BIRD	IA	Moderately certain	1490
30837	BIRD	EN	Certain	1523
30838	BIRD	EN	Certain	1523
93257	BIRD	VU	Very Certain (photo, specimen, expert)	1555
262220 154	BIRD	IA	Moderately certain	1573
23017	BIRD	CR	Certain	1588
5009157 163	BIRD	IA	Moderately certain	1599
5009158 163	BIRD	IA	Moderately certain	1599
5009374 163	BIRD	IA	Moderately certain	1599
5009157 161	BIRD	CR	Moderately certain	1599
5009158 161	BIRD	CR	Moderately certain	1599
5009374 161	BIRD	CR	Moderately certain	1599
5009157 152	BIRD	IA	Moderately certain	1599
5009157 178	BIRD	IA	Moderately certain	1599
5009158 178	BIRD	IA	Moderately certain	1599
5009374 178	BIRD	IA	Moderately certain	1599
5009158 158	BIRD	IA	Moderately certain	1599
5009373 158	BIRD	IA	Moderately certain	1599
5009374 158	BIRD	IA	Moderately certain	1599
138471 162	BIRD	IA	Moderately certain	1632
135334 162	BIRD	IA	Moderately	1632



			certain	
82016	BIRD	VU	Certain	1635
5076731 163	BIRD	IA	Moderately certain	1686
5076731 978	BIRD	IA	Moderately certain	1686
5021681 794	BIRD	EN	Moderately certain	1686
23685	BIRD	EN	Certain	1697
5009159 162	BIRD	IA	Moderately certain	1723
5019725 163	BIRD	IA	Moderately certain	1761
5074594 163	BIRD	IA	Moderately certain	1761
5074588 163	BIRD	IA	Moderately certain	1761
5073548 163	BIRD	IA	Moderately certain	1761
5120505 163	BIRD	IA	Moderately certain	1761
5019725 161	BIRD	CR	Moderately certain	1761
5074588 161	BIRD	CR	Moderately certain	1761
5073548 161	BIRD	CR	Moderately certain	1761
5073548 978	BIRD	IA	Moderately certain	1761
5019725 162	BIRD	IA	Moderately certain	1761
5036851 162	BIRD	IA	Moderately certain	1761
5037392 162	BIRD	IA	Moderately certain	1761
5057656 162	BIRD	IA	Moderately certain	1761
5064471 162	BIRD	IA	Moderately certain	1761
5074588 162	BIRD	IA	Moderately certain	1761
5073548 162	BIRD	IA	Moderately certain	1761
5114522 162	BIRD	IA	Moderately certain	1761
5120505 162	BIRD	IA	Moderately certain	1761

5019725 965	BIRD	IA	Moderately certain	1761
5037392 965	BIRD	IA	Moderately certain	1761
5074588 965	BIRD	IA	Moderately certain	1761
5078388 794	BIRD	EN	Moderately certain	1761
5085599 794	BIRD	EN	Moderately certain	1761
5089048 794	BIRD	EN	Moderately certain	1761
5095954 794	BIRD	EN	Moderately certain	1761
5036724 109	BIRD	IA	Moderately certain	1761
5009721 237	BIRD	OS	Moderately certain	1761
5089048 237	BIRD	OS	Moderately certain	1761
5058594 107	BIRD	IA	Moderately certain	1761
5009393 178	BIRD	IA	Moderately certain	1761
5009724 178	BIRD	IA	Moderately certain	1761
5019078 178	BIRD	IA	Moderately certain	1761
5019644 178	BIRD	IA	Moderately certain	1761
5019665 178	BIRD	IA	Moderately certain	1761
5019725 178	BIRD	IA	Moderately certain	1761
5019971 178	BIRD	IA	Moderately certain	1761
5020429 178	BIRD	IA	Moderately certain	1761
5033908 178	BIRD	IA	Moderately certain	1761
5036724 178	BIRD	IA	Moderately certain	1761
5058594 178	BIRD	IA	Moderately certain	1761
5074588 178	BIRD	IA	Moderately certain	1761
5073548 178	BIRD	IA	Moderately certain	1761

5110247 178	BIRD	IA	Moderately certain	1761
5114522 178	BIRD	IA	Moderately certain	1761
5120507 178	BIRD	IA	Moderately certain	1761
5120505 178	BIRD	IA	Moderately certain	1761
5073548 154	BIRD	IA	Moderately certain	1761
5009393 158	BIRD	IA	Moderately certain	1761
5009724 158	BIRD	IA	Moderately certain	1761
5019665 158	BIRD	IA	Moderately certain	1761
5019971 158	BIRD	IA	Moderately certain	1761
5020429 158	BIRD	IA	Moderately certain	1761
5033908 158	BIRD	IA	Moderately certain	1761
5036724 158	BIRD	IA	Moderately certain	1761
5036851 158	BIRD	IA	Moderately certain	1761
5074588 158	BIRD	IA	Moderately certain	1761
5120505 158	BIRD	IA	Moderately certain	1761
25604 851	BIRD	IA	Moderately certain	1782
25604 158	BIRD	IA	Moderately certain	1782
SWAN COASTAL PLAIN WATERBIRDS SCFORR 01- OCT-90 A GROUND STSA	BIRD	IA		1795
SWAN COASTAL PLAIN WATERBIRDS SCFORR 01- JAN-91 A GROUND STSA	BIRD	IA		1795
SWAN COASTAL PLAIN WATERBIRDS SCFORR 01- JAN-91 A GROUND CUSA	BIRD	CR		1795
SWAN COASTAL PLAIN WATERBIRDS SCFORR 14- JUL-90 A GROUND RNST	BIRD	IA		1795
SWAN COASTAL PLAIN WATERBIRDS SCFORR 29-	BIRD	IA		1795

APR-90 A GROUND RNST SWAN COASTAL PLAIN WATERBIRDS SCFORR 01- JAN-91 A GROUND RNST	BIRD	IA		1795
SWAN COASTAL PLAIN WATERBIRDS SCFORL 08- JAN-92 A GROUND RNST	BIRD	IA		1795
SWAN COASTAL PLAIN WATERBIRDS SCFORR 01- JAN-91 A GROUND LTST	BIRD	IA		1795
SWAN COASTAL PLAIN WATERBIRDS SCFORL 08- JAN-92 A GROUND LTST	BIRD	IA		1795
SWAN COASTAL PLAIN WATERBIRDS SCFORL 08- JAN-92 A GROUND WOSA	BIRD	IA		1795
SWAN COASTAL PLAIN WATERBIRDS SCFORR 29- APR-90 A GROUND GREE	BIRD	IA		1795
SWAN COASTAL PLAIN WATERBIRDS SCFORR 01- JAN-91 A GROUND GREE	BIRD	IA		1795
89319	BIRD	EN	Very Certain (photo, specimen, expert)	1826
89320	BIRD	EN	Very Certain (photo, specimen, expert)	1826
286602 237	BIRD	OS	Moderately certain	1848
5019511 163	BIRD	IA	Moderately certain	1860
5117720 978	BIRD	IA	Moderately certain	1860
5019511 162	BIRD	IA	Moderately certain	1860
5117720 162	BIRD	IA	Moderately certain	1860
5019511 965	BIRD	IA	Moderately certain	1860
5019511 178	BIRD	IA	Moderately certain	1860
5117720 178	BIRD	IA	Moderately certain	1860
5019511 158	BIRD	IA	Moderately	1860

			certain	
61904 163	BIRD	IA	Moderately certain	1861
61904 161	BIRD	CR	Moderately certain	1861
61904 162	BIRD	IA	Moderately certain	1861
61904 178	BIRD	IA	Moderately certain	1861
21312	BIRD	EN	Moderately certain	1873
22711	BIRD	EN	Moderately certain	1891
61905 163	BIRD	IA	Moderately certain	1916
61905 161	BIRD	CR	Moderately certain	1916
61905 162	BIRD	IA	Moderately certain	1916
61905 158	BIRD	IA	Moderately certain	1916
22708	BIRD	EN	Moderately certain	1957
262308 158	BIRD	IA	Moderately certain	1958
133870 161	BIRD	CR	Moderately certain	1961
133870 162	BIRD	IA	Moderately certain	1961
7970	MAMMAL	EN	Certain	1975
22718	BIRD	EN	Moderately certain	1990
22721	BIRD	EN	Moderately certain	1994
22707	BIRD	EN	Moderately certain	1999
22705	BIRD	EN	Moderately certain	2002
6430 158	BIRD	IA	Moderately certain	2073
9339 162	BIRD	IA	Moderately certain	2082
9339 851	BIRD	IA	Moderately certain	2082
9339 158	BIRD	IA	Moderately certain	2082
22716	BIRD	EN	Moderately certain	2106

6471 162	BIRD	IA	Moderately certain	2110
5078386 978	BIRD	IA	Moderately certain	2110
5080154 978	BIRD	IA	Moderately certain	2110
5012272 162	BIRD	IA	Moderately certain	2110
5012264 162	BIRD	IA	Moderately certain	2110
5012253 162	BIRD	IA	Moderately certain	2110
5013862 162	BIRD	IA	Moderately certain	2110
5078386 162	BIRD	IA	Moderately certain	2110
5080154 162	BIRD	IA	Moderately certain	2110
5121722 162	BIRD	IA	Moderately certain	2110
5122165 162	BIRD	IA	Moderately certain	2110
5024623 794	BIRD	EN	Moderately certain	2110
5025811 794	BIRD	EN	Moderately certain	2110
5080154 794	BIRD	EN	Moderately certain	2110
5122165 794	BIRD	EN	Moderately certain	2110
5122165 237	BIRD	OS	Moderately certain	2110
5078386 154	BIRD	IA	Moderately certain	2110
5122165 154	BIRD	IA	Moderately certain	2110
5012751 158	BIRD	IA	Moderately certain	2110
5012272 158	BIRD	IA	Moderately certain	2110
5012264 158	BIRD	IA	Moderately certain	2110
5013862 158	BIRD	IA	Moderately certain	2110
5019076 158	BIRD	IA	Moderately certain	2110
5021668 158	BIRD	IA	Moderately certain	2110

5078386 158	BIRD	IA	Moderately certain	2110
5080154 158	BIRD	IA	Moderately certain	2110
5009269 162	BIRD	IA	Moderately certain	2139
5009160 162	BIRD	IA	Moderately certain	2139
5009269 794	BIRD	EN	Moderately certain	2139
496658 162	BIRD	IA	Moderately certain	2141
496658 794	BIRD	EN	Moderately certain	2141
88293	BIRD	VU	Very Certain (photo, specimen, expert)	2153
5122600 162	BIRD	IA	Moderately certain	2219
AVIF:6821	BIRD	IA	WAM Vouchered	2239
AVIF:6706	BIRD	IA	WAM Vouchered	2239
266533 794	BIRD	EN	Moderately certain	2243
267982 794	BIRD	EN	Moderately certain	2243
85344	INVERTEBRATE	VU	Very Certain (photo, specimen, expert)	2246
8796 137	BIRD	IA	Moderately certain	2256
8796 136	BIRD	IA	Moderately certain	2256
5055087 162	BIRD	IA	Moderately certain	2274
5074572 162	BIRD	IA	Moderately certain	2274
5033310 178	BIRD	IA	Moderately certain	2274
5036726 178	BIRD	IA	Moderately certain	2274
5055087 178	BIRD	IA	Moderately certain	2274

3351	BIRD	OS	Certain	2306
SWAN COASTAL PLAIN WATERBIRDS SCBARL 01- JAN-91 A GROUND WOSA	BIRD	IA		2320
SWAN COASTAL PLAIN WATERBIRDS SCBARL 01- OCT-90 A GROUND GREE	BIRD	IA		2320
SWAN COASTAL PLAIN WATERBIRDS SCBARL 01- JAN-91 A GROUND GREE	BIRD	IA		2320
100188	BIRD	VU	Certain	2368
22926	BIRD	EN	Certain	2381
SWAN COASTAL PLAIN WATERBIRDS SCDUCK 12- APR-90 A GROUND GREE	BIRD	IA		2460
SWAN COASTAL PLAIN WATERBIRDS SCDUCK 01- JAN-91 A GROUND GREE	BIRD	IA		2460
35534	BIRD	EN	Certain	2475
22706	BIRD	EN	Moderately certain	2514
122554 178	BIRD	IA	Moderately certain	2532
22710	BIRD	EN	Moderately certain	2549
5009155 794	BIRD	EN	Moderately certain	2565
5009223 794	BIRD	EN	Moderately certain	2565
AVIF:18579	BIRD	IA	WAM Vouchered	2569
5009224 794	BIRD	EN	Moderately certain	2578
5009225 794	BIRD	EN	Moderately certain	2578
84715	BIRD	VU	Moderately certain	2596
262184 163	BIRD	IA	Moderately certain	2600
262184 161	BIRD	CR	Moderately certain	2600
262184 162	BIRD	IA	Moderately certain	2600
262184 158	BIRD	IA	Moderately certain	2600
74861	BIRD	VU	Moderately certain	2648
22712	BIRD	EN	Moderately	2653



				certain	
21300	BIRD	EN	Not Sure	2656	
22709	BIRD	EN	Moderately certain	2659	
74858	BIRD	EN	Not Sure	2660	
22722	BIRD	EN	Moderately certain	2685	
22719	BIRD	EN	Moderately certain	2694	
21303	BIRD	EN	Not Sure	2704	
21304	BIRD	EN	Moderately certain	2704	
21305	BIRD	EN	Moderately certain	2704	
21306	BIRD	EN	Not Sure	2704	
21307	BIRD	EN	Not Sure	2704	
21308	BIRD	EN	Not Sure	2704	
21310	BIRD	EN	Moderately certain	2704	
22723	BIRD	EN	Moderately certain	2718	
22713	BIRD	EN	Moderately certain	2732	
22715	BIRD	EN	Moderately certain	2810	
22720	BIRD	EN	Moderately certain	2810	
22714	BIRD	EN	Moderately certain	2823	
58175 158	BIRD	IA	Moderately certain	2911	
449713 162	BIRD	IA	Moderately certain	2972	
23627	BIRD	EN	Certain	2973	
5025809 794	BIRD	EN	Moderately certain	3006	
26454	BIRD	EN	Certain	3080	
439397 161	BIRD	CR	Moderately certain	3137	
439397 794	BIRD	EN	Moderately certain	3137	
439397 152	BIRD	IA	Moderately certain	3137	
439397 158	BIRD	IA	Moderately certain	3137	
80372	BIRD	VU	Moderately certain	3173	

84718	BIRD	VU	Moderately certain	3176
100206	BIRD	VU	Certain	3176
5012268 794	BIRD	EN	Moderately certain	3247
5021674 794	BIRD	EN	Moderately certain	3247
5025806 794	BIRD	EN	Moderately certain	3247
5013472 237	BIRD	OS	Moderately certain	3247
5013487 237	BIRD	OS	Moderately certain	3247
5012748 178	BIRD	IA	Moderately certain	3247
5013472 178	BIRD	IA	Moderately certain	3247
5012829 158	BIRD	IA	Moderately certain	3247
5009179 158	BIRD	IA	Moderately certain	3283
25143	BIRD	EN	Certain	3299
35487	BIRD	EN	Certain	3299
112	BIRD	EN	Very Certain	3386
89309	BIRD	EN	Very Certain (photo, specimen, expert)	3464
89311	BIRD	EN	Very Certain (photo, specimen, expert)	3685
89325	BIRD	EN	Very Certain (photo, specimen, expert)	3735
19211	BIRD	VU	Certain	3783
19210	BIRD	EN	Moderately certain	3783
218891 794	BIRD	EN	Moderately certain	3882
162	BIRD	EN	Very Certain	4005
5074576 178	BIRD	IA	Moderately	4042

5057654 158	BIRD	IA	certain Moderately certain	4042
11001	BIRD	EN	Certain	4164
156	BIRD	EN	Very Certain	4236
89308	BIRD	EN	Very Certain (photo, specimen, expert)	4326
35774	BIRD	EN	Certain	4413
35775	BIRD	EN	Certain	4413
84698	BIRD	VU	Moderately certain	4451
95875	BIRD	VU	Moderately certain	4451
100249	BIRD	VU	Certain	4451
26	BIRD	EN	Very Certain	4451
80410	BIRD	VU	Moderately certain	4451
80411	BIRD	EN	Moderately certain	4451
242410	BIRD	VU	Certain	4467
242408	BIRD	VU	Certain	4467
242367	BIRD	EN	Certain	4467
243137	BIRD	IA	Certain	4467
5022737 237	BIRD	OS	Moderately certain	4479
5022737 158	BIRD	IA	Moderately certain	4479
35474	BIRD	EN	Certain	4514
35475	BIRD	EN	Certain	4514
26453	BIRD	EN	Certain	4527
676	MAMMAL	EN	Moderately certain	4555
35452	BIRD	EN	Certain	4609
35453	BIRD	EN	Certain	4609
35454	BIRD	EN	Certain	4609
35455	BIRD	EN	Certain	4609
MAMM:M6650	MAMMAL	VU	WAM Vouchered	4634
AVIF:38471	BIRD	EN	WAM Vouchered	4698
761429 794	BIRD	EN	Moderately	4791

761422 178	BIRD	IA	certain Moderately certain	4791
SWAN COASTAL PLAIN WATERBIRDS SCTHOL 13- JAN-92 A GROUND STSA	BIRD	IA		4792
761425 794	BIRD	EN	Moderately certain	4822
761427 794	BIRD	EN	Moderately certain	4822
2103 794	BIRD	EN	Moderately certain	4852
24040	BIRD	EN	Certain	4879
218338 794	BIRD	EN	Moderately certain	4893
218339 794	BIRD	EN	Moderately certain	4893
455501 161	BIRD	CR	Moderately certain	4902
286591 794	BIRD	EN	Moderately certain	4902
433600 794	BIRD	EN	Moderately certain	4902
433601 794	BIRD	EN	Moderately certain	4902
455501 794	BIRD	EN	Moderately certain	4902
439405 794	BIRD	EN	Moderately certain	4902
462172 794	BIRD	EN	Moderately certain	4902
462176 794	BIRD	EN	Moderately certain	4902
5001813 794	BIRD	EN	Moderately certain	4902
462178 794	BIRD	EN	Moderately certain	4902
471048 794	BIRD	EN	Moderately certain	4902
471050 794	BIRD	EN	Moderately certain	4902
487148 794	BIRD	EN	Moderately certain	4902
487149 794	BIRD	EN	Moderately certain	4902
487151 794	BIRD	EN	Moderately certain	4902
489924 794	BIRD	EN	Moderately	4902

			certain	
496784 794	BIRD	EN	Moderately certain	4902
761415 794	BIRD	EN	Moderately certain	4902
496785 794	BIRD	EN	Moderately certain	4902
496786 794	BIRD	EN	Moderately certain	4902
761419 794	BIRD	EN	Moderately certain	4902
770914 794	BIRD	EN	Moderately certain	4902
770465 794	BIRD	EN	Moderately certain	4902
270992 178	BIRD	IA	Moderately certain	4902
455501 178	BIRD	IA	Moderately certain	4902
487149 178	BIRD	IA	Moderately certain	4902
289438 158	BIRD	IA	Moderately certain	4902
291144 158	BIRD	IA	Moderately certain	4902
291145 158	BIRD	IA	Moderately certain	4902
291146 158	BIRD	IA	Moderately certain	4902
433594 158	BIRD	IA	Moderately certain	4902
433596 158	BIRD	IA	Moderately certain	4902
439403 158	BIRD	IA	Moderately certain	4902
444848 158	BIRD	IA	Moderately certain	4902
433595 158	BIRD	IA	Moderately certain	4902
455501 158	BIRD	IA	Moderately certain	4902
487150 158	BIRD	IA	Moderately certain	4902
761415 158	BIRD	IA	Moderately certain	4902
770465 158	BIRD	IA	Moderately certain	4902
770465 159	BIRD	IA	Moderately	4902

448710 158	BIRD	IA	certain Moderately certain	4921
8745 851	BIRD	IA	Moderately certain	4930
6551	BIRD	EN	Certain	4942
6550	BIRD	OS	Certain	4942
15	BIRD	EN	Very Certain	4949
442640 158	BIRD	IA	Moderately certain	4960
5024621 794	BIRD	EN	Moderately certain	4966
5025306 794	BIRD	EN	Moderately certain	4966
5044864 794	BIRD	EN	Moderately certain	4966
268013 794	BIRD	EN	Moderately certain	4972
271078 794	BIRD	EN	Moderately certain	4972
283886 794	BIRD	EN	Moderately certain	4972
271078 237	BIRD	OS	Moderately certain	4972
262305 158	BIRD	IA	Moderately certain	4972
289439 158	BIRD	IA	Moderately certain	4972
138629 158	BIRD	IA	Moderately certain	4972
97522	BIRD	EN	Certain	4986

Key to conservation status ranking:

EX = Presumed Extinct

EN = Endangered

CR = Critically Endangered

VU = Vulnerable

IA = migratory birds protected under an international agreement

### **Ecological linkages and vegetation connectivity**

Data on ecological linkages is not available for this area.

**2.3 Principle (c) Native vegetation should not be cleared if it includes, or is necessary for the continued existence of rare flora.**

**Legend**

- Threatened and Priority Flora
- Local Government Authority
- State Roads
- Other Roads
- Coast and Sea
  - water
  - land



**Specialy Protected Flora**

The following flora records have been located within 5km of the application area:

Popn Id	WA Rank	Proximity (m)
84944	CR	1464
106241	CR	3084
97289	CR	3194
97291	CR	3264
84960	CR	3397
97288	CR	3613
84954	CR	3792
106242	CR	3949
97290	CR	4011
84955	CR	4368

Key to the Conservation Status:

- CR - Critically Endangered
- EN - Endangered
- VU - Vulnerable
- EX - Extinct

**2.4 Principle (d) Native vegetation should not be cleared if it comprises the whole or a part or, or is necessary for the maintenance of, a threatened ecological community.**

**Threatened Ecological Communities**

The following threatened ecological community records have been located within 5km of the application area:

<u>Record ID</u>	<u>Ranking</u>	<u>Proximity (m)</u>
112354	Priority 3	0
112355	Priority 3	0
112357	Priority 3	0
113079	Priority 3	0
113090	Priority 3	0
126622	Priority 3	0
110812	Priority 3	0
112356	Priority 3	0
113091	Priority 3	0
113034	Priority 3	0
112231	Priority 3	137
112359	Priority 3	151
112557	Priority 3	170
112230	Priority 3	171
113060	Priority 3	224
111986	Priority 3	243
113061	Priority 3	249
111144	Priority 3	260
113033	Priority 3	315
110813	Priority 3	323
112232	Priority 3	346
113141	Priority 3	360
113137	Priority 3	369
110815	Priority 3	370
111901	Priority 3	385
112358	Priority 3	439
112229	Priority 3	470
110967	Priority 3	488
113138	Priority 3	512
113140	Priority 3	531
112445	Priority 3	576
113036	Priority 3	600
111903	Priority 3	643
113136	Priority 3	653
113035	Priority 3	668



113104	Priority 3	671
113134	Priority 3	680
112834	Priority 3	777
112500	Priority 3	986
113135	Priority 3	1014
111760	Priority 3	1090
111902	Priority 3	1094
111237	Priority 3	1100
111981	Priority 3	1118
111983	Priority 3	1213
111985	Priority 3	1248
112586	Priority 3	1286
111982	Priority 3	1289
111759	Priority 3	1319
111149	Priority 3	1338
112412	Priority 3	1371
112649	Priority 3	1373
111236	Priority 3	1377
111235	Priority 3	1388
111984	Priority 3	1435
113179	Priority 3	1450
126624	Priority 3	1486
112225	Priority 3	1520
111234	Priority 3	1536
112587	Priority 3	1593
113031	Priority 3	1597
111283	Priority 3	1638
113024	Priority 3	1663
112448	Priority 3	1671
111475	Priority 3	1734
110950	Priority 3	1794
112947	Priority 3	1821
112310	Priority 3	1870
112306	Priority 3	1912
111472	Priority 3	1931
116833	Priority 3	1935
112449	Priority 3	1936
111476	Priority 3	1937
116834	Priority 3	1951
112307	Priority 3	1968
126623	Priority 3	2011
112305	Priority 3	2012

116832	Priority 3	2034
116660	Priority 3	2057
112838	Priority 3	2068
112447	Priority 3	2079
111474	Priority 3	2088
112297	Priority 3	2090
116670	Priority 3	2093
3188	Priority 3	2125
112450	Priority 3	2125
111246	Priority 3	2131
112558	Priority 3	2164
111697	Priority 3	2167
111516	Priority 3	2191
112472	Priority 3	2209
112839	Priority 3	2220
111473	Priority 3	2236
111696	Priority 3	2252
2981	Priority 3	2258
116671	Priority 3	2274
111944	Priority 3	2282
111717	Priority 3	2282
112413	Priority 3	2286
112414	Priority 3	2296
111238	Priority 3	2299
111248	Priority 3	2299
111945	Priority 3	2306
116781	Priority 3	2319
112625	Priority 3	2332
111247	Priority 3	2338
110997	Priority 3	2368
112488	Priority 3	2370
112627	Priority 3	2371
112624	Priority 3	2371
111519	Priority 3	2375
111249	Priority 3	2382
112309	Priority 3	2390
112487	Priority 3	2404
112308	Priority 3	2407
111718	Priority 3	2408
112623	Priority 3	2414
112874	Priority 3	2427
112452	Priority 3	2429

111943	Priority 3	2441
110846	Priority 3	2444
113013	Priority 3	2448
112486	Priority 3	2448
116829	Priority 3	2450
112622	Priority 3	2452
111023	Priority 3	2456
111520	Priority 3	2456
111946	Priority 3	2457
111456	Priority 3	2466
111022	Priority 3	2471
112626	Priority 3	2480
112451	Priority 3	2480
111271	Priority 3	2486
111021	Priority 3	2492
111025	Priority 3	2500
111024	Priority 3	2505
111026	Priority 3	2533
116831	Priority 3	2534
113133	Priority 3	2538
111719	Priority 3	2541
113057	Priority 3	2542
111457	Priority 3	2542
111272	Priority 3	2560
112613	Priority 3	2569
112501	Priority 3	2575
111040	Priority 3	2589
111940	Priority 3	2595
116830	Priority 3	2597
112502	Priority 3	2608
111050	Priority 3	2613
111495	Priority 3	2618
110948	Priority 3	2622
112885	Priority 3	2624
111038	Priority 3	2646
113142	Priority 3	2655
112843	Priority 3	2655
111270	Priority 3	2669
111039	Priority 3	2670
110858	Priority 3	2674
112038	Priority 3	2674
116626	Priority 3	2681

112446	Priority 3	2683
111496	Priority 3	2704
113014	Priority 3	2707
111720	Priority 3	2719
111051	Priority 3	2723
116632	Priority 3	2725
111052	Priority 3	2743
116635	Priority 3	2746
112075	Priority 3	2760
111721	Priority 3	2778
111500	Priority 3	2779
111060	Priority 3	2785
112037	Priority 3	2788
112266	Priority 3	2790
116844	Priority 3	2798
111499	Priority 3	2804
116636	Priority 3	2806
112589	Priority 3	2809
111061	Priority 3	2813
111941	Priority 3	2814
116836	Priority 3	2815
116633	Priority 3	2819
112880	Priority 3	2821
111497	Priority 3	2823
111053	Priority 3	2833
111054	Priority 3	2838
111513	Priority 3	2838
125346	Priority 3	2844
116835	Priority 3	2848
111755	Priority 3	2850
116630	Priority 3	2859
112590	Priority 3	2861
112570	Priority 3	2862
113059	Priority 3	2865
111942	Priority 3	2874
112571	Priority 3	2876
116628	Priority 3	2877
111036	Priority 3	2880
112036	Priority 3	2882
113197	Priority 3	2883
112889	Priority 3	2886
112351	Priority 3	2894

113196	Priority 3	2899
111939	Priority 3	2901
116478	Priority 3	2902
111679	Priority 3	2910
112884	Priority 3	2922
111027	Priority 3	2922
113195	Priority 3	2925
112033	Priority 3	2926
111056	Priority 3	2927
113130	Priority 3	2927
112035	Priority 3	2930
111057	Priority 3	2937
111034	Priority 3	2942
111754	Priority 3	2945
113132	Priority 3	2946
111059	Priority 3	2948
113194	Priority 3	2953
113058	Priority 3	2956
112873	Priority 3	2956
3190	Priority 3	2956
111183	Priority 3	2958
111233	Priority 3	2960
111035	Priority 3	2960
111698	Priority 3	2967
111699	Priority 3	2971
112573	Priority 3	2978
111811	Priority 3	2978
113193	Priority 3	2986
111184	Priority 3	2986
111498	Priority 3	2987
112890	Priority 3	2987
111801	Priority 3	2990
112076	Priority 3	2991
111041	Priority 3	2999
111938	Priority 3	2999
112034	Priority 3	3001
111033	Priority 3	3003
111030	Priority 3	3008
113147	Priority 3	3015
113191	Priority 3	3018
111055	Priority 3	3019
111037	Priority 3	3022

111029	Priority 3	3027
111182	Priority 3	3033
112883	Priority 3	3040
111937	Priority 3	3041
111180	Priority 3	3043
113190	Priority 3	3053
111028	Priority 3	3055
112875	Priority 3	3063
111812	Priority 3	3065
111175	Priority 3	3067
112572	Priority 3	3073
116779	Priority 3	3083
111058	Priority 3	3084
111510	Priority 3	3090
116845	Priority 3	3093
126155	Priority 3	3095
112620	Priority 3	3095
113192	Priority 3	3096
111800	Priority 3	3098
111756	Priority 3	3099
110889	Priority 3	3100
113131	Priority 3	3101
112032	Priority 3	3103
111509	Priority 3	3117
111802	Priority 3	3120
112612	Priority 3	3123
111512	Priority 3	3125
126151	Priority 3	3131
112844	Priority 3	3136
111179	Priority 3	3141
112609	Priority 3	3143
111478	Priority 3	3145
111813	Priority 3	3151
113358	Priority 3	3152
111687	Priority 3	3152
116629	Priority 3	3154
111174	Priority 3	3155
111031	Priority 3	3155
111242	Priority 3	3159
113105	Priority 3	3166
111688	Priority 3	3175
111692	Priority 3	3176

126153	Priority 3	3176
111621	Priority 3	3184
111757	Priority 3	3190
111181	Priority 3	3191
112503	Priority 3	3192
111511	Priority 3	3213
111062	Priority 3	3213
112886	Priority 3	3223
110833	Priority 3	3227
111178	Priority 3	3230
111722	Priority 3	3233
111680	Priority 3	3246
111620	Priority 3	3247
112030	Priority 3	3247
111758	Priority 3	3253
111691	Priority 3	3259
111683	Priority 3	3262
112845	Priority 3	3271
113181	Priority 3	3282
112611	Priority 3	3286
116843	Priority 3	3297
126154	Priority 3	3298
112868	Priority 3	3298
111715	Priority 3	3303
111690	Priority 3	3307
111622	Priority 3	3308
112539	Priority 3	3309
111689	Priority 3	3311
112031	Priority 3	3314
112893	Priority 3	3318
113153	Priority 3	3320
112559	Priority 3	3322
112437	Priority 3	3322
112891	Priority 3	3322
113184	Priority 3	3323
113359	Priority 3	3326
113185	Priority 3	3330
113162	Priority 3	3332
110949	Priority 3	3335
112894	Priority 3	3336
112505	Priority 3	3336
111063	Priority 3	3346

116590	Priority 3	3347
113160	Priority 3	3348
113161	Priority 3	3349
113183	Priority 3	3359
112846	Priority 3	3359
111172	Priority 3	3361
112842	Priority 3	3364
111682	Priority 3	3364
125345	Priority 3	3369
112510	Priority 3	3371
112896	Priority 3	3379
116479	Priority 3	3384
112895	Priority 3	3385
112887	Priority 3	3388
113180	Priority 3	3400
110941	Priority 3	3400
113049	Priority 3	3414
111477	Priority 3	3414
111032	Priority 3	3415
113118	Priority 3	3417
111507	Priority 3	3418
111471	Priority 3	3420
126152	Priority 3	3428
111308	Priority 3	3429
116591	Priority 3	3432
112869	Priority 3	3445
111173	Priority 3	3449
112457	Priority 3	3449
113182	Priority 3	3450
111686	Priority 3	3455
112840	Priority 3	3458
112870	Priority 3	3458
111437	Priority 3	3460
111624	Priority 3	3462
112881	Priority 3	3464
111517	Priority 3	3468
111681	Priority 3	3468
111064	Priority 3	3471
112808	Priority 3	3473
110816	Priority 3	3477
113152	Priority 3	3492
110942	Priority 3	3504



112610	Priority 3	3511
111503	Priority 3	3512
111723	Priority 3	3513
112820	Priority 3	3514
125347	Priority 3	3524
112504	Priority 3	3525
113119	Priority 3	3533
111307	Priority 3	3534
111518	Priority 3	3539
111083	Priority 3	3553
111208	Priority 3	3555
125503	Priority 3	3555
111065	Priority 3	3559
113011	Priority 3	3560
111685	Priority 3	3566
113012	Priority 3	3570
111073	Priority 3	3570
111840	Priority 3	3571
116846	Priority 3	3574
112882	Priority 3	3580
111306	Priority 3	3586
111693	Priority 3	3594
111505	Priority 3	3595
112888	Priority 3	3597
111143	Priority 3	3601
112585	Priority 3	3603
112506	Priority 3	3607
112538	Priority 3	3610
111439	Priority 3	3612
112690	Priority 3	3616
113186	Priority 3	3619
111593	Priority 3	3621
113007	Priority 3	3622
112867	Priority 3	3623
111716	Priority 3	3625
111066	Priority 3	3627
113010	Priority 3	3631
113006	Priority 3	3632
111504	Priority 3	3634
112588	Priority 3	3640
113009	Priority 3	3651
125348	Priority 3	3654

112416	Priority 3	3657
111502	Priority 3	3660
111068	Priority 3	3661
113154	Priority 3	3662
112871	Priority 3	3663
111207	Priority 3	3665
113155	Priority 3	3670
112253	Priority 3	3673
112541	Priority 3	3673
111067	Priority 3	3674
112583	Priority 3	3674
111438	Priority 3	3675
111594	Priority 3	3684
111454	Priority 3	3690
111684	Priority 3	3691
112678	Priority 3	3691
111695	Priority 3	3693
112629	Priority 3	3694
112470	Priority 3	3698
113157	Priority 3	3705
111269	Priority 3	3705
112537	Priority 3	3705
112513	Priority 3	3708
112397	Priority 3	3710
112695	Priority 3	3712
113139	Priority 3	3714
112250	Priority 3	3715
4998	Priority 3	3717
111623	Priority 3	3719
111455	Priority 3	3720
111604	Priority 3	3722
110965	Priority 3	3725
112251	Priority 3	3728
116477	Priority 3	3730
112628	Priority 3	3730
113156	Priority 3	3741
112540	Priority 3	3743
110947	Priority 3	3744
113198	Priority 3	3745
112415	Priority 3	3747
113005	Priority 3	3749
111508	Priority 3	3755

111305	Priority 3	3759
112696	Priority 3	3761
112689	Priority 3	3761
112685	Priority 3	3773
112677	Priority 3	3774
111210	Priority 3	3774
111304	Priority 3	3778
112252	Priority 3	3778
112680	Priority 3	3782
111239	Priority 3	3788
111211	Priority 3	3789
116474	Priority 3	3790
116664	Priority 3	3792
111452	Priority 3	3793
111501	Priority 3	3796
113158	Priority 3	3797
111176	Priority 3	3799
112676	Priority 3	3802
111515	Priority 3	3802
112026	Priority 3	3804
112584	Priority 3	3806
113144	Priority 3	3806
112688	Priority 3	3809
111450	Priority 3	3818
113092	Priority 3	3819
111069	Priority 3	3821
111605	Priority 3	3821
111276	Priority 3	3823
116389	Priority 3	3825
113146	Priority 3	3833
111070	Priority 3	3835
112715	Priority 3	3844
111449	Priority 3	3847
111261	Priority 3	3849
112396	Priority 3	3850
112679	Priority 3	3851
112701	Priority 3	3854
111245	Priority 3	3855
111467	Priority 3	3857
111177	Priority 3	3859
112029	Priority 3	3859
116663	Priority 3	3861

111278	Priority 3	3862
112025	Priority 3	3869
112523	Priority 3	3870
116662	Priority 3	3871
111309	Priority 3	3875
111262	Priority 3	3877
111606	Priority 3	3881
111209	Priority 3	3882
112698	Priority 3	3889
112600	Priority 3	3891
112438	Priority 3	3892
111257	Priority 3	3895
111514	Priority 3	3896
111596	Priority 3	3903
112921	Priority 3	3908
112687	Priority 3	3908
111258	Priority 3	3913
112700	Priority 3	3914
112027	Priority 3	3920
111275	Priority 3	3924
113149	Priority 3	3928
112713	Priority 3	3928
110996	Priority 3	3928
111390	Priority 3	3932
112516	Priority 3	3935
111597	Priority 3	3937
112699	Priority 3	3937
116475	Priority 3	3937
112697	Priority 3	3939
112872	Priority 3	3939
112684	Priority 3	3945
112529	Priority 3	3945
113145	Priority 3	3945
112028	Priority 3	3949
111469	Priority 3	3954
111005	Priority 3	3955
111071	Priority 3	3955
111274	Priority 3	3957
111014	Priority 3	3960
112525	Priority 3	3960
116647	Priority 3	3961
116381	Priority 3	3969

112515	Priority 3	3973
116596	Priority 3	3974
112508	Priority 3	3974
112507	Priority 3	3987
110946	Priority 3	3991
111263	Priority 3	3993
111072	Priority 3	3994
111310	Priority 3	3997
112694	Priority 3	3998
111013	Priority 3	3998
111468	Priority 3	4001
111451	Priority 3	4002
116476	Priority 3	4004
111389	Priority 3	4006
112923	Priority 3	4007
112683	Priority 3	4008
112876	Priority 3	4013
111506	Priority 3	4016
2991	Priority 3	4017
112692	Priority 3	4019
112524	Priority 3	4022
111256	Priority 3	4022
111012	Priority 3	4023
111311	Priority 3	4031
112693	Priority 3	4031
112514	Priority 3	4035
112550	Priority 3	4039
113143	Priority 3	4046
112417	Priority 3	4048
112528	Priority 3	4054
112242	Priority 3	4062
116648	Priority 3	4066
111660	Priority 3	4069
111277	Priority 3	4070
111085	Priority 3	4075
116597	Priority 3	4084
112682	Priority 3	4089
111264	Priority 3	4090
113015	Priority 3	4092
112228	Priority 3	4093
111265	Priority 3	4094
111595	Priority 3	4103

112243	Priority 3	4104
111619	Priority 3	4108
111324	Priority 3	4108
112526	Priority 3	4110
111613	Priority 3	4116
112241	Priority 3	4120
111282	Priority 3	4126
113126	Priority 3	4126
111612	Priority 3	4132
113116	Priority 3	4133
113151	Priority 3	4137
110868	Priority 3	4144
112681	Priority 3	4145
111084	Priority 3	4150
110857	Priority 3	4152
112239	Priority 3	4153
111255	Priority 3	4154
111206	Priority 3	4158
112920	Priority 3	4163
112552	Priority 3	4164
112509	Priority 3	4166
111601	Priority 3	4172
111266	Priority 3	4177
111386	Priority 3	4178
112691	Priority 3	4178
125343	Priority 3	4182
111387	Priority 3	4184
111384	Priority 3	4184
113159	Priority 3	4187
112444	Priority 3	4191
111011	Priority 3	4196
111194	Priority 3	4198
112551	Priority 3	4203
116631	Priority 3	4205
111453	Priority 3	4206
111273	Priority 3	4210
111388	Priority 3	4220
116483	Priority 3	4220
111383	Priority 3	4224
126160	Priority 3	4225
112442	Priority 3	4225
112527	Priority 3	4231

111205	Priority 3	4237
111321	Priority 3	4242
111600	Priority 3	4245
111260	Priority 3	4245
3084	Priority 3	4246
112464	Priority 3	4250
112463	Priority 3	4252
111609	Priority 3	4254
111607	Priority 3	4255
111611	Priority 3	4256
112544	Priority 3	4256
116382	Priority 3	4266
113129	Priority 3	4266
111198	Priority 3	4269
110841	Priority 3	4271
112240	Priority 3	4272
111598	Priority 3	4272
111379	Priority 3	4273
112466	Priority 3	4274
111197	Priority 3	4275
112646	Priority 3	4283
110999	Priority 3	4292
112553	Priority 3	4297
112462	Priority 3	4298
112686	Priority 3	4299
112675	Priority 3	4305
111323	Priority 3	4307
112395	Priority 3	4309
112724	Priority 3	4310
111203	Priority 3	4312
112461	Priority 3	4314
111195	Priority 3	4315
116380	Priority 3	4323
111599	Priority 3	4324
111259	Priority 3	4327
113364	Priority 3	4331
111325	Priority 3	4335
112465	Priority 3	4341
112460	Priority 3	4346
111294	Priority 3	4351
112477	Priority 3	4351
112459	Priority 3	4351

111602	Priority 3	4355
111202	Priority 3	4356
126013	Priority 3	4361
112443	Priority 3	4362
112567	Priority 3	4362
112822	Priority 3	4364
111196	Priority 3	4369
111320	Priority 3	4373
112458	Priority 3	4373
111608	Priority 3	4387
125504	Priority 3	4391
111240	Priority 3	4393
112922	Priority 3	4394
112542	Priority 3	4394
113107	Priority 3	4398
110814	Priority 3	4400
112439	Priority 3	4400
126161	Priority 3	4401
126147	Priority 3	4401
111317	Priority 3	4404
111322	Priority 3	4405
112568	Priority 3	4406
111280	Priority 3	4410
113150	Priority 3	4413
111268	Priority 3	4414
111244	Priority 3	4416
111267	Priority 3	4418
110866	Priority 3	4420
112440	Priority 3	4420
111204	Priority 3	4421
112476	Priority 3	4423
112798	Priority 3	4424
110998	Priority 3	4427
111380	Priority 3	4435
3156	Priority 3	4435
111610	Priority 3	4436
121395	Priority 3	4441
111878	Priority 3	4441
113125	Priority 3	4444
111253	Priority 3	4459
126010	Priority 3	4461
111295	Priority 3	4462



111381	Priority 3	4466
121394	Priority 3	4470
111319	Priority 3	4473
111000	Priority 3	4474
112364	Priority 3	4474
112512	Priority 3	4475
111252	Priority 3	4478
113106	Priority 3	4480
111279	Priority 3	4483
112954	Priority 3	4485
112828	Priority 3	4493
112721	Priority 3	4494
111385	Priority 3	4497
111318	Priority 3	4500
111375	Priority 3	4501
110827	Priority 3	4504
112549	Priority 3	4504
113117	Priority 3	4511
111374	Priority 3	4514
111705	Priority 3	4521
111281	Priority 3	4528
112823	Priority 3	4533
121124	Priority 3	4539
112809	Priority 3	4549
111382	Priority 3	4553
112474	Priority 3	4555
112519	Priority 3	4561
121368	Priority 3	4561
111876	Priority 3	4563
112647	Priority 3	4563
111592	Priority 3	4564
111001	Priority 3	4566
116472	Priority 3	4573
116627	Priority 3	4573
111251	Priority 3	4573
112827	Priority 3	4574
111766	Priority 3	4577
111254	Priority 3	4581
112511	Priority 3	4583
111201	Priority 3	4586
121367	Priority 3	4587
111250	Priority 3	4588

111584	Priority 3	4590
111243	Priority 3	4596
111002	Priority 3	4598
121123	Priority 3	4601
112547	Priority 3	4604
112473	Priority 3	4605
116473	Priority 3	4608
111376	Priority 3	4609
112543	Priority 3	4612
111371	Priority 3	4615
112475	Priority 3	4619
121364	Priority 3	4620
111200	Priority 3	4622
111377	Priority 3	4625
111193	Priority 3	4629
112517	Priority 3	4631
111199	Priority 3	4635
111003	Priority 3	4637
112478	Priority 3	4638
111582	Priority 3	4638
111668	Priority 3	4639
113120	Priority 3	4644
121232	Priority 3	4645
112518	Priority 3	4647
112393	Priority 3	4651
116642	Priority 3	4656
111006	Priority 3	4657
112479	Priority 3	4660
112391	Priority 3	4666
111590	Priority 3	4668
112481	Priority 3	4669
111706	Priority 3	4670
111293	Priority 3	4677
112714	Priority 3	4677
112554	Priority 3	4678
111583	Priority 3	4679
126012	Priority 3	4690
111373	Priority 3	4691
111591	Priority 3	4701
116782	Priority 3	4704
116598	Priority 3	4706
111004	Priority 3	4707

121024	Priority 3	4711
112441	Priority 3	4712
112545	Priority 3	4721
112720	Priority 3	4722
111010	Priority 3	4724
112227	Priority 3	4730
112360	Priority 3	4734
111669	Priority 3	4739
113201	Priority 3	4747
111707	Priority 3	4747
112363	Priority 3	4752
121025	Priority 3	4758
126011	Priority 3	4760
111368	Priority 3	4761
116592	Priority 3	4762
111372	Priority 3	4762
112546	Priority 3	4768
111009	Priority 3	4768
111704	Priority 3	4772
111708	Priority 3	4772
121233	Priority 3	4782
116481	Priority 3	4784
112548	Priority 3	4787
112556	Priority 3	4794
112392	Priority 3	4796
110944	Priority 3	4796
111767	Priority 3	4797
112394	Priority 3	4797
111670	Priority 3	4803
111008	Priority 3	4806
111625	Priority 3	4811
112719	Priority 3	4811
112952	Priority 3	4828
112480	Priority 3	4831
116804	Priority 3	4835
112555	Priority 3	4836
111585	Priority 3	4836
111007	Priority 3	4837
126620	Priority 3	4852
111663	Priority 3	4858
112821	Priority 3	4858
125987	Priority 3	4859

121027	Priority 3	4860
111445	Priority 3	4861
111768	Priority 3	4864
112361	Priority 3	4867
121026	Priority 3	4868
110804	Priority 3	4872
111367	Priority 3	4875
112362	Priority 3	4876
112226	Priority 3	4882
111378	Priority 3	4890
116589	Priority 3	4891
111662	Priority 3	4899
112664	Priority 3	4910
116614	Priority 3	4921
116613	Priority 3	4923
116803	Priority 3	4931
112566	Priority 3	4933
112520	Priority 3	4934
112564	Priority 3	4936
121065	Priority 3	4942
111769	Priority 3	4943
116805	Priority 3	4945
121315	Priority 3	4948
116617	Priority 3	4951
112951	Priority 3	4954
126146	Priority 3	4955
111664	Priority 3	4956
126009	Priority 3	4956
111241	Priority 3	4956
111626	Priority 3	4957
121120	Priority 3	4961
111369	Priority 3	4961
111366	Priority 3	4975
112898	Priority 3	4979
116802	Priority 3	4981
116616	Priority 3	4982
116604	Priority 3	4983
116615	Priority 3	4984
111764	Priority 3	4991
112565	Priority 3	4992
112531	Priority 3	4992

**2.6 Principle (f) Native vegetation should not be cleared if it is growing in, or in association with, an environment associated with a watercourse or wetland.**

**Legend**

- Ramsar Sites**  

- DoE Important Wetlands**  

- Local Government Authority**  

- State Roads**  

- Other Roads**  

- Hydrography**
- Lakes, Waterbodies and Reservoirs (Geoscience Australia)**
  -  Perennial
  -  Non-perennial
  -  Dam or Reservoir
- Coast and Sea**
  -  water
  -  land



The site is in or within 5 km of the following RAMSAR sites (distance from the application area):

Forrestdale & Thomsons Lakes - 381m

The site is in or within 5 km of the following Directory of Important Wetlands sites (distance from the application area):

Thomsons Lake - 821m

Gibbs Road Swamp System - 2277m

The site is in or within 5 km of the following Geoscience Australia mapped lakes (distance from the application area):

SOUTH LAKE - 3954m

Unnamed lake 1 - 1001m

KOGOLUP LAKE - 1034m

BIBRA LAKE - 4172m

THOMSONS LAKE - 909m

YANGEBUP LAKE - 1612m

LITTLE RUSH LAKE - 3041m

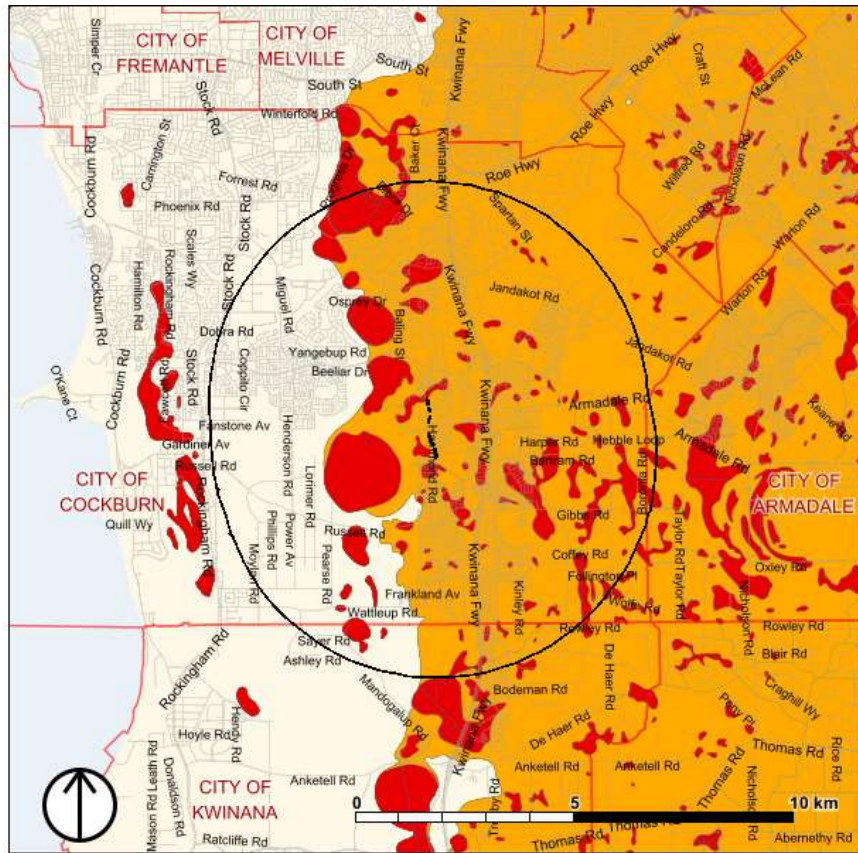
The site is in or within 50m of the following Swan coastal plain geomorphic wetland types:

Conservation - 0.97 ha

**2.7 Principle (g) Native vegetation should not be cleared if the clearing of the vegetation is likely to cause appreciable land degradation.**

**Legend**

- Local Government Authority
- State Roads
- Other Roads
- Hydrography
- Acid Sulphate Soil Risk
  - High to moderate risk (Class 1)
  - Moderate to low risk (Class 2)
- Coast and Sea
  - water
  - land



Acid Sulphate Soil Risk:

0.00ha of the application area is within an area considered to be at high to moderate potential of containing acid sulphate soils.  
 0.41ha of the application area is within an area considered to be at low to moderate potential of containing acid sulphate soils.

Groundwater Salinity (Total Dissolved Solids):

<500mg/l - 0.42 ha

Hydrogeology:











Surficial Sediments - Shallow Aquifers, Sand, gravel - 0.42 ha

Soils:

Bassendean B1 Phase (212Bs\_\_B1): Extremely low to very low relief dunes, undulating sandplain and discrete sand rises with deep bleached grey sands sometimes with a pale yellow B horizon or a weak iron-organic hardpan at depths generally greater than 2 m; banksia dominant. - 0.21 ha  
 Bassendean B2 Phase (212Bs\_\_B2): Flat to very gently undulating sandplain with well to moderately well drained deep bleached grey sands with a pale yellow B horizon or a weak iron-organic hardpan 1-2 m. - 0.19 ha  
 Bassendean B3 Phase (212Bs\_\_B3): Closed depressions and poorly defined stream channels with moderately deep, poorly to very poorly drained bleached sands with an iron-organic pan, or clay subsoil. Surfaces are dark grey sand or sandy loam. - 0.01 ha

**2.8 Principle (h) Native vegetation should not be cleared if the clearing of the vegetation is likely to have an impact on the environmental values of any adjacent or nearby conservation area.**

**Legend**

- Bush Forever Areas**
-  Bush Forever Areas
- DBCAs Managed Lands and Waters**
-  Legislated Lands and Waters
-  Lands of Interest
- EPA Redbook Recommended Conservation Reserves 1976-91**
-  EPA Redbook Recommended Conservation Reserves 1976-91
- Local Government Authority**
-  Local Government Authority
- State Roads**
-  State Roads
- Other Roads**
-  Other Roads
- Regional Parks**
-  Regional Parks
- Coast and Sea**
-  water
-  land



**Bush Forever Sites:**

- BF390 - 3049m
- BF391 - 0m
- BF392 - 1636m
- BF393 - 3621m
- BF492 - 1861m
- BF263 - 2306m
- BF254 - 3545m
- BF244 - 3927m
- BF267 - 4825m
- BF256 - 1332m
- BF388 - 3900m
- BF344 - 4255m
- BF268 - 4833m
- BF389 - 4481m

**Regional Parks:**

- BFBeeliar Regional Park - 0m
- Jandakot Regional Park - 1918m

**DBCAs Conservation Estate:**

- R 49561:Conservation Park:Class - 340m
- R 48291:Conservation Park:Class A - 3032m
- Thomsons Lake Nature Reserve:R 15556:Nature Reserve:Class A - 334m
- Harry Waring Marsupial Reserve:R 29241:Nature

Reserve: Class A - 1636m

EPA Redbook 1976-91  
Reserves:

M94 File: DPAW-025.1865 - 4096m  
M93 File: DPAW-025.1862 - 336m

DBC Land for Wildlife: 1910 - 2810m  
1366 - 3997m  
2004 - 3817m  
1909 - 3002m  
28 - 3440m  
1939 - 3689m  
1916 - 2822m  
2193 - 3158m  
1922 - 3280m

**2.9 Principle (i) Native vegetation should not be cleared if the clearing of the vegetation is likely to cause deterioration in the quality of surface or underground water.**

**Legend**

Local Government Authority

State Roads

Other Roads

Hydrography

**Aquatic GDE**

- Known GDE (regional study)
- Unclassified potential GDE (regional study)
- High potential GDE (national assessment)
- Moderate potential GDE (national assessment)
- Low potential GDE (national assessment)
- Unclassified potential GDE (national assessment)

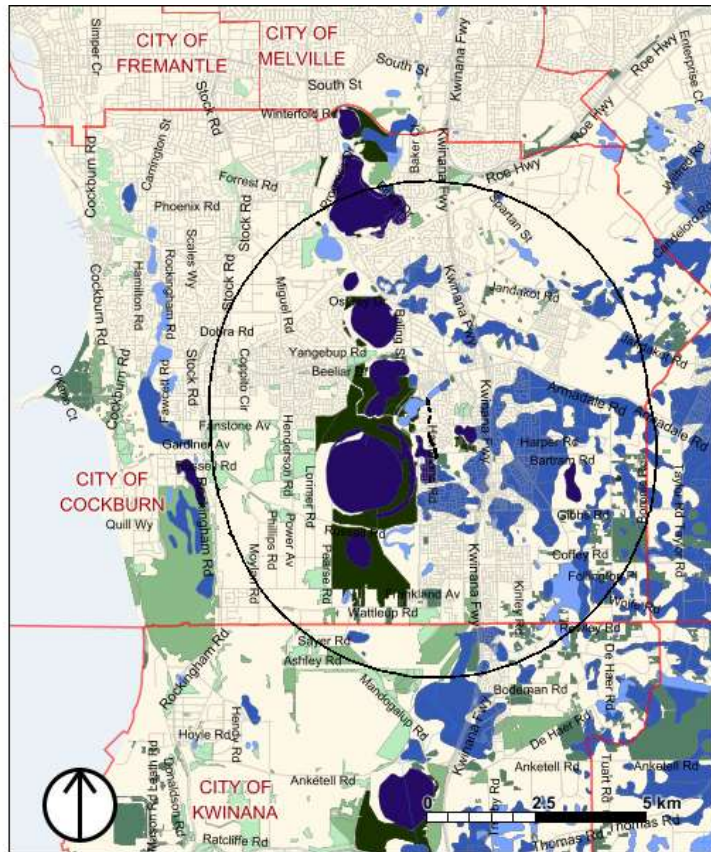
**Terrestrial GDE**

- Known GDE (regional study)
- Unclassified potential GDE (regional study)
- High potential GDE (national assessment)
- Moderate potential GDE (national assessment)
- Low potential GDE (national assessment)
- Unclassified potential GDE (national assessment)

**Coast and Sea**

water

land



For surface water features affected by clearing area see 2.6 Principle (f).

The site is within the following RIWI Act areas:

Jandakot Groundwater Area



The site is within the following Aquatic Water Dependent Ecosystems:  
Wetland, Moderate potential GDE - from national assessment - 0.06 ha

The site is within the following Terrestrial Water Dependent Ecosystems:  
Terrestrial vegetation, Known GDE - from regional studies - 0.00 ha  
Vegetation, High potential GDE - from national assessment - 0.00 ha

### **2.10 Principle (j) Native vegetation should not be cleared if the clearing of the vegetation is likely to cause, or exacerbate, the incidence or intensity of flooding.**

The site is within the following DAFWA Land Quality flood risk categories:  
0 - 0.40 ha  
46 - 0.01 ha

## **3 Planning instruments and other relevant matters**

The site is within the following EPA Policy Areas:  
EPA System 6 and the Swan Coastal Plain portion of System 1 region (EPA Guidance Statement No 10, 2003) 0.42 ha  
Environmental Protection (Kwinana) (Atmospheric Wastes) Policy Approval Order (1999) 0.42 ha

The site is within 5km of the following DAFWA mapped landuses:  
Poultry farms - 3592m

The site overlies or is adjacent to the following local planning scheme zones:  
Public purposes  
Development -  
Lakes and drainage -

The site overlies or is adjacent to the following Regional Scheme classes:  
MRS - Urban  
MRS - Other regional roads  
MRS - Parks and recreation  
MRS - Urban deferred

©Western Australian Land Information Authority (2019):  
Cadastral/Property boundaries  
Hydrography lines  
Crown Reserves  
Roads  
Local Government Administrative Boundaries

