

# CPS 8863/1

115°8'10"E

115°8'17"E

115°8'24"E

115°8'31"E

33°43'34"S

33°43'41"S

33°43'48"S

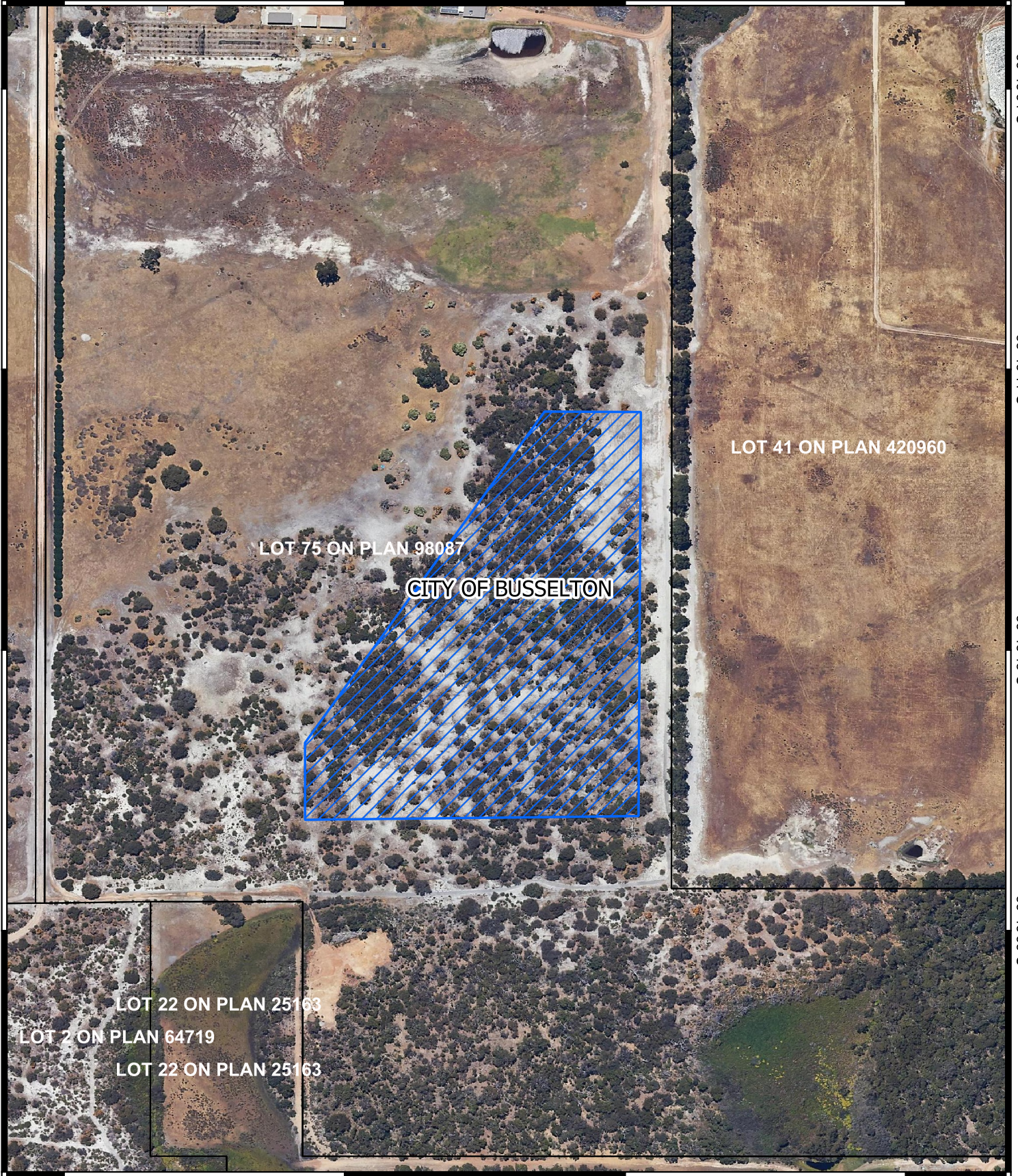
33°43'55"S

33°43'34"S

33°43'41"S

33°43'48"S

33°43'55"S




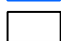

115°8'10"E

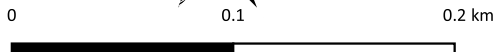
115°8'17"E

115°8'24"E

115°8'31"E

## Legend

-  CPS 8863-1 application area revised
-  Land Tenure (LGATE\_226) - SLIP
-  Local Government Authorities



1:2,554.08

Projection: GDA2020



GOVERNMENT OF  
WESTERN AUSTRALIA