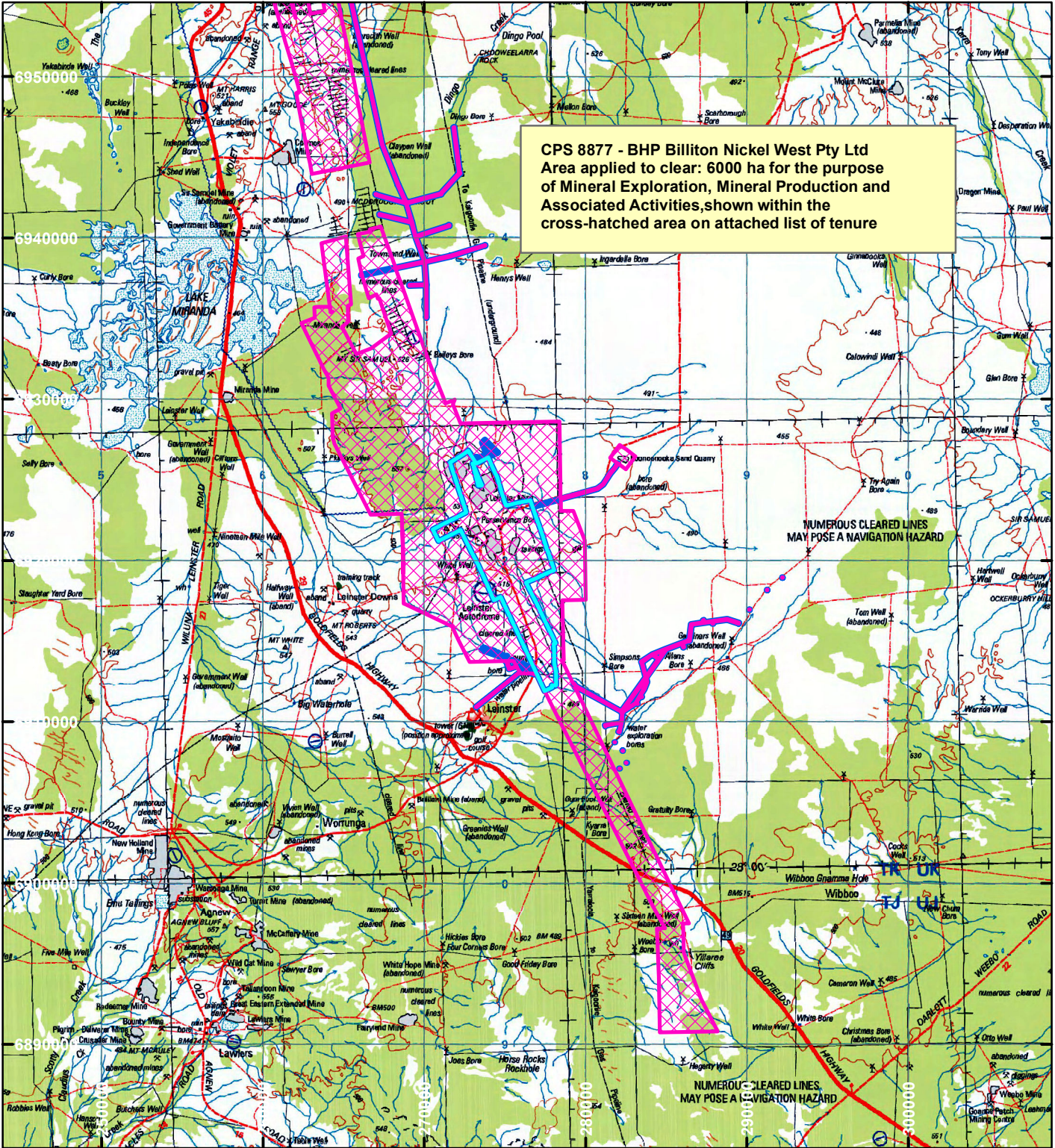


# CPS 8877 - BHP Billiton Nickel West Pty Ltd - MAP B

CPS 8877 - BHP Billiton Nickel West Pty Ltd  
 Area applied to clear: 6000 ha for the purpose  
 of Mineral Exploration, Mineral Production and  
 Associated Activities, shown within the  
 cross-hatched area on attached list of tenure



## LEGEND



Clearing Instruments



Mining Tenements



Scale 1:350,000

(Approximate when reproduced at A4)

Geocentric Datum Australia 1994

Note: the data in this map have not been projected. This may result in geometric distortion or measurement inaccuracies.

..... Date .....

Officer with delegated authority under Section 20 of the Environmental Protection Act 1986

Information derived from this map should be confirmed with the data custodian acknowledged by the agency acronym in the legend.



WA Crown Copyright 2002