

# CPS 8921/1 - Map

118°35'42.000"E

118°35'45.600"E

118°35'49.200"E

118°35'52.800"E

20°21'46.800"S

20°21'50.400"S

20°21'54.000"S

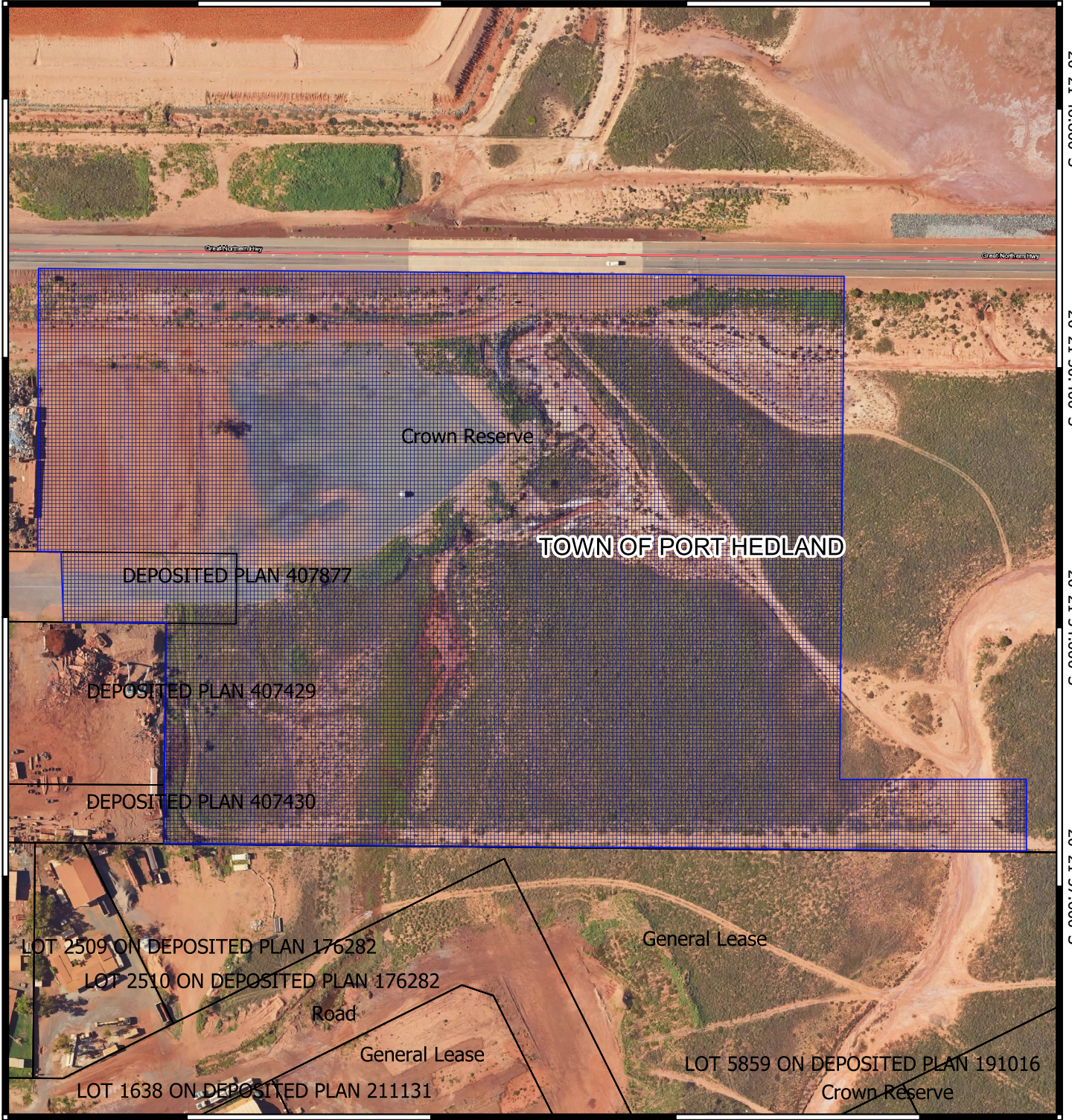
20°21'57.600"S

20°21'46.800"S

20°21'50.400"S

20°21'54.000"S

20°21'57.600"S



118°35'42.000"E

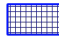
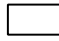

118°35'45.600"E

118°35'49.200"E

118°35'52.800"E

## Legend

### Map Layers

-  CPS areas applied to clear
-  Land Tenure LGATE - 226
-  Local Government Authorities
- Roads (Simplified) (LGATE-195)



0 25 50 m



1:2403

MGA 94  
Geocentric Datum of Australia 1994

