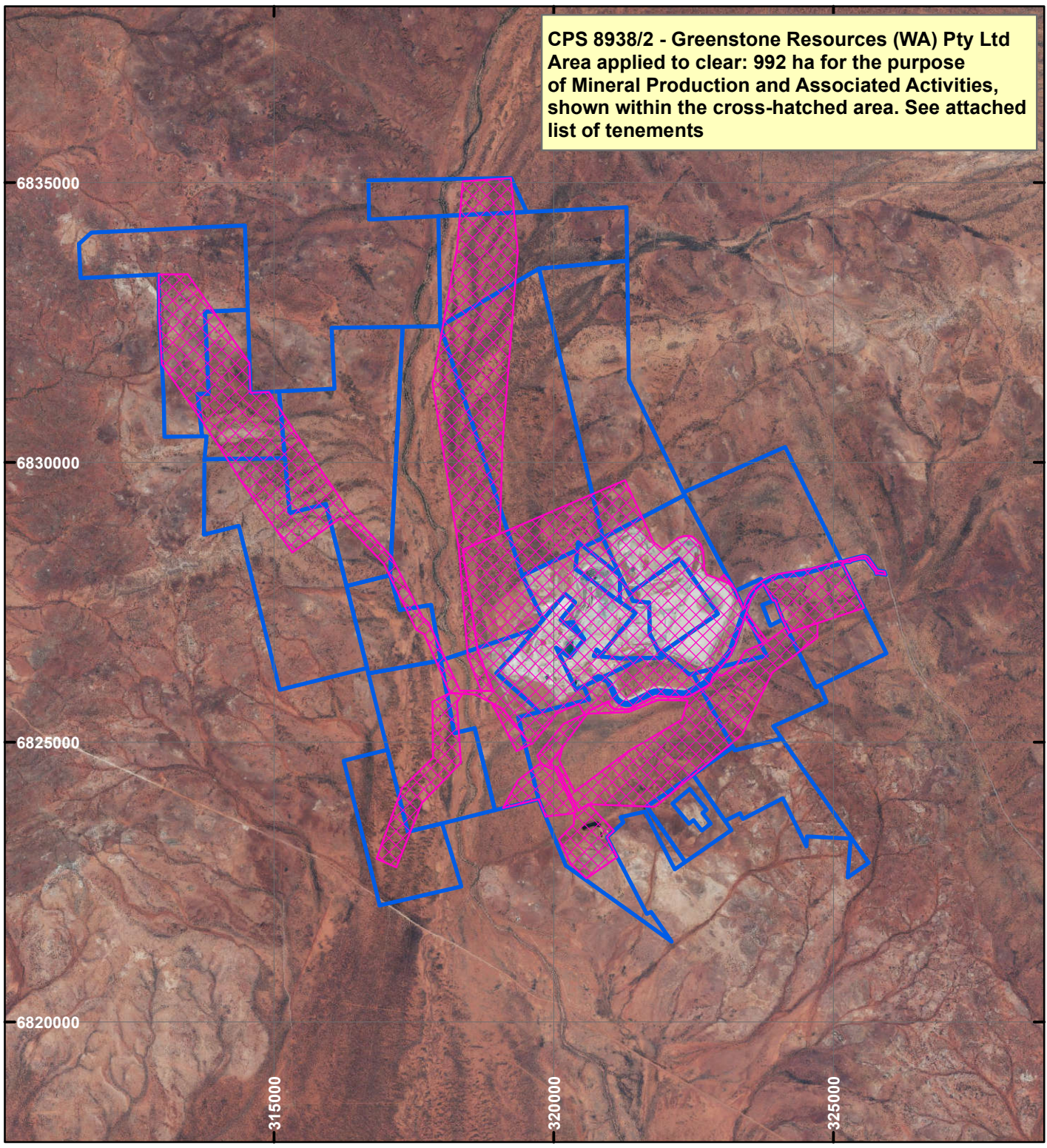
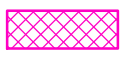



CPS 8938/2 - Greenstone Resources (WA) Pty Ltd

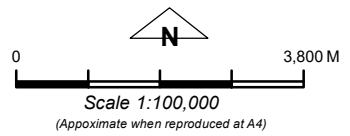
CPS 8938/2 - Greenstone Resources (WA) Pty Ltd
 Area applied to clear: 992 ha for the purpose
 of Mineral Production and Associated Activities,
 shown within the cross-hatched area. See attached
 list of tenements



LEGEND

-  Clearing Instruments
-  Mining Tenements

Orthophotography sourced from Landgate



Geocentric Datum Australia 1994
 Note: the data in this map have not been projected. This may result in geometric distortion or measurement inaccuracies.

..... Date

Officer with delegated authority under Section 20 of the Environmental Protection Act 1986

Information derived from this map should be confirmed with the data custodian acknowledged by the agency acronym in the legend.

