

# Index

## Contents

Project Brief .....2

Clearing Period .....2

Clearing Area .....2

Location Plan .....3

Aerial Map .....4

Photos.....5

## Project Brief

In the 2020/21 Budget a submission has been made for the reconstruction of Somers Road, Waroona. The reconstruction will be between 11.00 to 12.03 straight line kilometres (SLK) and will consist of road widening and reconstruction works. The clearing has been limited with the native vegetation requiring removal being 27 *Corymbia calophylla* mature trees with will be less than 1 hectare of vegetation.

## Clearing Period

The project will be part of the 2020/21 construction program with some initial works being scheduled for July 2020. These works will be limited to design works with the commencement of the reconstruction works expected to commence in September 2020 and is expected to be completed by July 2021.

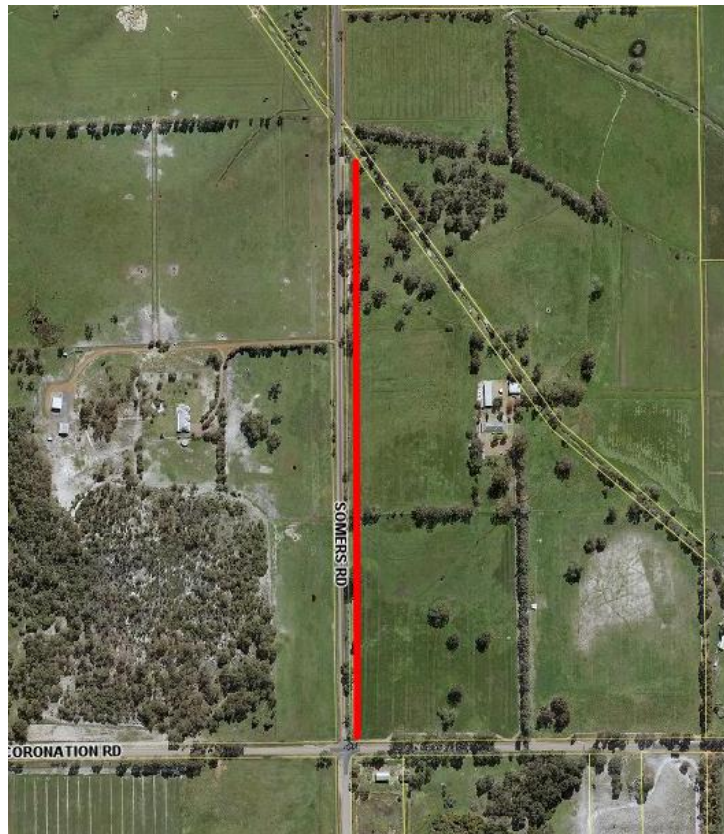
## Clearing Area

The clearing area has been limited to specific trees as per the attached shape file. This will consist of 27 *Corymbia calophylla* trees. All trees have been inspected and appear to have no obvious signs of nesting or hollow points. Some example photos can be found attached to the document.

Tree ID	Description	Diameter
5180	<i>Corymbia calophylla</i>	0.6
5181	<i>Corymbia calophylla</i>	0.6
5183	<i>Corymbia calophylla</i>	0.5
5182	<i>Corymbia calophylla</i>	0.6
5184	<i>Corymbia calophylla</i>	0.6
5185	<i>Corymbia calophylla</i>	0.7
5186	<i>Corymbia calophylla</i>	0.7
5187	<i>Corymbia calophylla</i>	0.5
5188	<i>Corymbia calophylla</i>	0.6
5397	<i>Corymbia calophylla</i>	0.3
5396	<i>Corymbia calophylla</i>	.06
5392	<i>Corymbia calophylla</i>	0.5
5393	<i>Corymbia calophylla</i>	0.4
5395	<i>Corymbia calophylla</i>	0.4
5394	<i>Corymbia calophylla</i>	0.5
5558	<i>Corymbia calophylla</i>	0.6
5559	<i>Corymbia calophylla</i>	0.6
5560	<i>Corymbia calophylla</i>	0.3
5561	<i>Corymbia calophylla</i>	0.4
5562	<i>Corymbia calophylla</i>	0.3
5563	<i>Corymbia calophylla</i>	0.5
5565	<i>Corymbia calophylla</i>	0.3
5566	<i>Corymbia calophylla</i>	0.6
5567	<i>Corymbia calophylla</i>	0.3
5568	<i>Corymbia calophylla</i>	0.3
5569	<i>Corymbia calophylla</i>	0.6
5570	<i>Corymbia calophylla</i>	0.5

## Location Plan

The section of Somers Road runs north from Coronation Road for 1.03km. (See plan below).

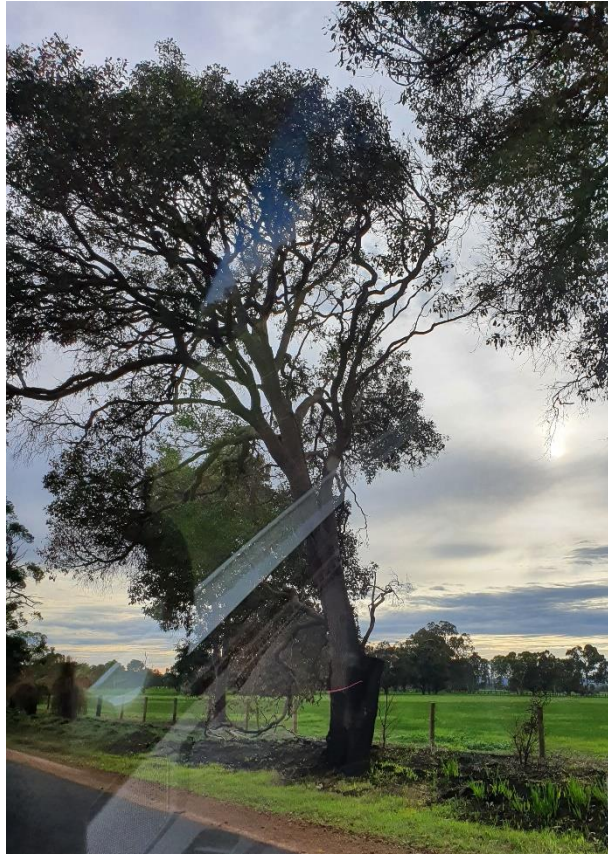


Aerial Map





## Photos



Tree ID 5180



Tree ID 5181



Tree ID 5182 & ID 5183



ID 5184, 5185 & 5186





ID 5187 & 5188