



CLEARING PERMIT

Granted under section 51E of the Environmental Protection Act 1986

Purpose Permit number:	CPS 8994/1
Permit Holder:	Shire of Murray
Duration of Permit:	30 April 2021 30 April 2026

The permit holder is authorised to clear *native vegetation* subject to the following conditions of this permit.

PART I – CLEARING AUTHORISED

1. Clearing authorised (purpose)

The permit holder is authorised to clear *native vegetation* for the purpose of road widening and road upgrades.

2. Land on which clearing is to be done

Road Reserve – 11054005, Dwellingup
Road Reserve – 11054004, Dwellingup
Road Reserve – 11054006, Dwellingup
Road Reserve – 1371906, Dwellingup
Road Reserve – 11778488, Dwellingup
Road Reserve – 1371874, Dwellingup
Road Reserve – 1371873, Dwellingup
Road Reserve – 1371921, Dwellingup
State Forest 14, Dwellingup
State Forest 14, Wuraming
Unallocated Crown Land, Dwellingup

3. Clearing authorised

The permit holder must not clear more than 0.8 hectares of *native vegetation* within the combined areas cross-hatched yellow in Figure 1, Figure 2 and Figure 3 of attached Schedule 1.

4. Type of clearing authorised

This Permit authorises the Permit Holder to clear native vegetation for the purpose described in condition 1 of this Permit to the extent that the Permit Holder has the power to carry out works involving clearing for this purpose under the *Local Government Act 1995* or any other written law.

PART II – MANAGEMENT CONDITIONS

5. Avoid, minimise and reduce the impacts and extent of clearing

In determining the amount of native vegetation to be cleared authorised under this permit, the permit holder must have regard to the following principles, set out in order of preference:

- avoid the *clearing* of *native vegetation*;
- minimise the amount of *native vegetation* to be cleared; and
- reduce the impact of *clearing* on any environmental value.

6. Weed and dieback management

When undertaking any *clearing* authorised under this permit, the permit holder must take the following steps to minimise the risk of the introduction and spread of *weeds* and *dieback*:

- (i) clean earth-moving machinery of soil and vegetation prior to entering and leaving the area to be cleared;
- (ii) ensure that no known *dieback* or *weed*-affected soil, *mulch*, *fill* or other material is brought into the area to be cleared;
- (iii) restrict the movement of machines and other vehicles to the limits of the areas to be cleared; and
- (iv) only move soils in dry conditions.

7. Fauna management – avoidance of black cockatoo habitat trees

The permit holder must not clear known *black cockatoo habitat trees* in the locations listed in Schedule 2.

PART III - RECORD KEEPING AND REPORTING

8. Records that must be kept

The permit holder must maintain records relating to the listed relevant matters in accordance with the specifications detailed in Table 1.

Table 1: Records that must be kept

No.	Relevant matter	Specifications
1.	In relation to the authorised <i>clearing</i> activities generally	<ul style="list-style-type: none">(a) the location where the <i>clearing</i> occurred, recorded using a Global Positioning System (GPS) unit set to Geocentric Datum Australia 1994 (GDA94), expressing the geographical coordinates in Eastings and Northings;(b) the date that the area was cleared;(c) the size of the area cleared (in hectares);(d) actions taken to avoid, minimise, and reduce the impacts and extent of <i>clearing</i> in accordance with <i>condition 5</i>; and(e) actions taken to minimise the risk of the introduction and spread of <i>weeds</i> and <i>dieback</i> in accordance with <i>condition 6</i>.
2.	In relation to fauna management	<ul style="list-style-type: none">(a) actions taken to avoid the <i>clearing</i> of <i>black cockatoo habitat trees</i> in accordance with <i>condition 7</i>.

9. Reporting

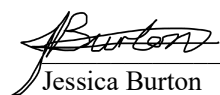
The permit holder must provide to the *CEO* the records required under *condition 8* of this permit when requested by the *CEO*.

DEFINITIONS

In this permit, the terms in Table 2 have the meanings defined.

Table 2: Definitions

Term	Definition
black cockatoo habitat trees	means trees that have a diameter, measured at 150 centimetres from the base of the tree, of 50 centimetres or greater (or 30 centimetres or greater for <i>Eucalyptus salmonophloia</i> or <i>Eucalyptus wandoo</i>) that contain hollows suitable for breeding by black cockatoo species.
CEO	Chief Executive Officer of the <i>department</i> responsible for the administration of the clearing provisions under the <i>Environmental Protection Act 1986</i>
clearing	has the meaning given under section 3(1) of the EP Act
condition	a condition to which this clearing permit is subject under section 51H of the EP Act
Department	means the department established under section 35 of the <i>Public Sector Management Act 1994</i> (WA) and designated as responsible for the administration of the EP Act, which includes Part V Division 3.
dieback	means the effect of <i>Phytophthora</i> species on native vegetation
EP Act	<i>Environmental Protection Act 1986</i> (WA)
fill	means material used to increase the ground level, or to fill a depression
mulch	means the use of organic matter, wood chips or rocks to slow the movement of water across the soil surface and to reduce evaporation
native vegetation	has the meaning given under section 3(1) and section 51A of the EP Act
weeds	means any plant – (a) that is a declared pest under section 22 of the <i>Biosecurity and Agriculture Management Act 2007</i> ; or (b) published in a Department of Biodiversity, Conservation and Attractions species-led ecological impact and invasiveness ranking summary, regardless of ranking; or (c) not indigenous to the area concerned



Jessica Burton
A/MANAGER
NATIVE VEGETATION REGULATION

Officer delegated under Section 20
of the *Environmental Protection Act 1986*

7 April 2021

Schedule 1

Figure 1: Map of the boundaries of the areas within which *clearing* may occur

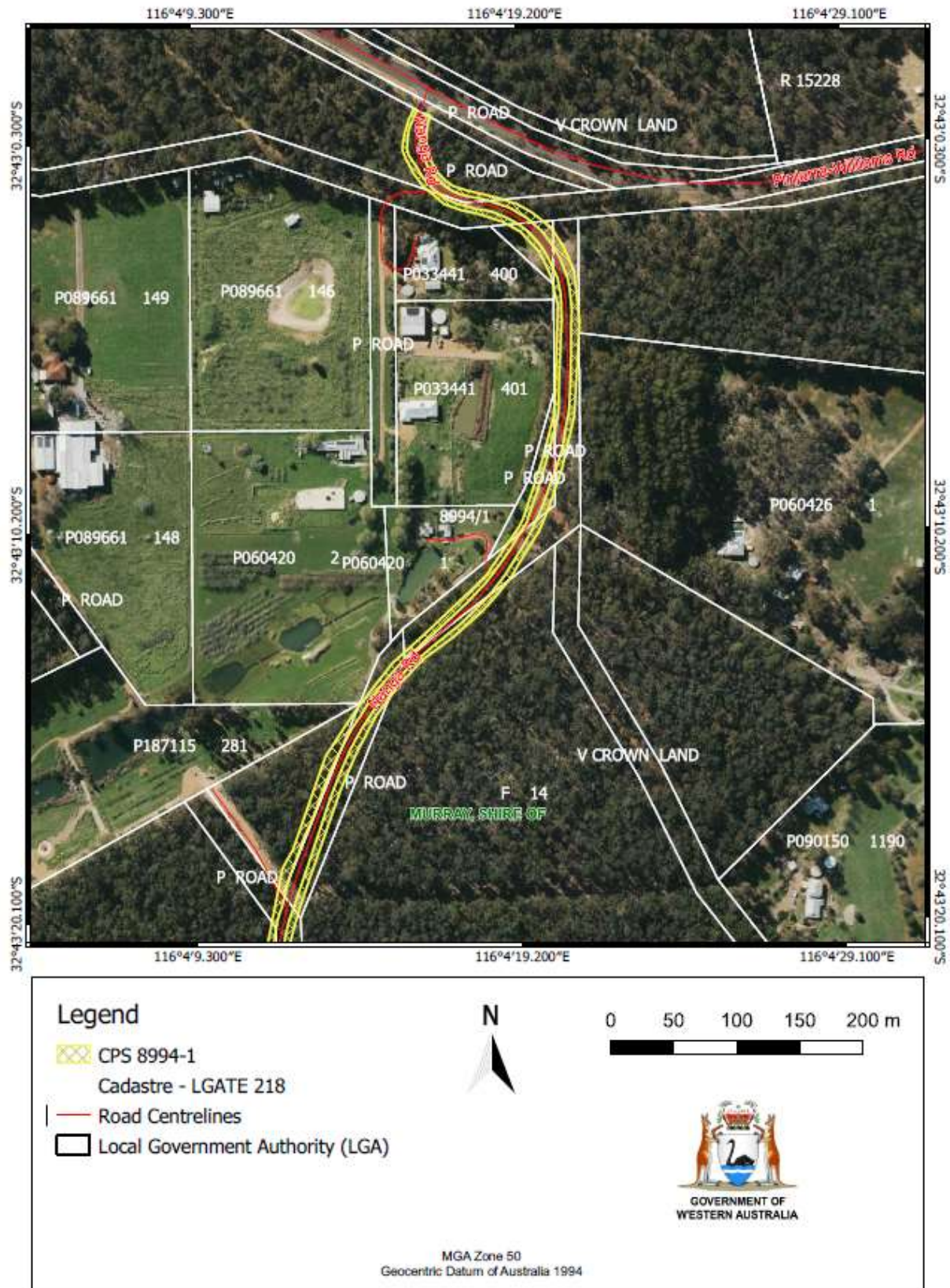


Figure 2: Map of the boundaries of the areas within which clearing may occur

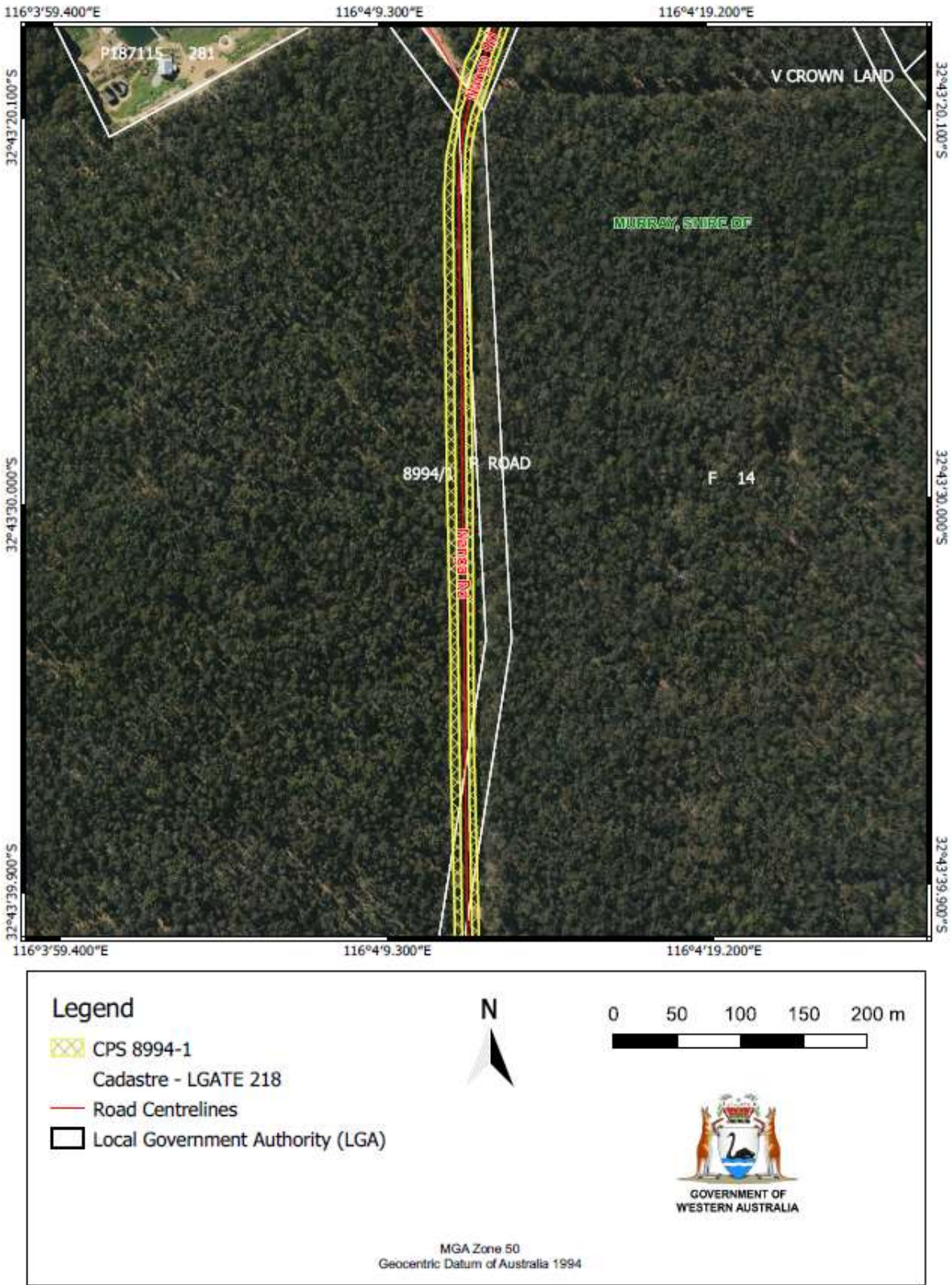
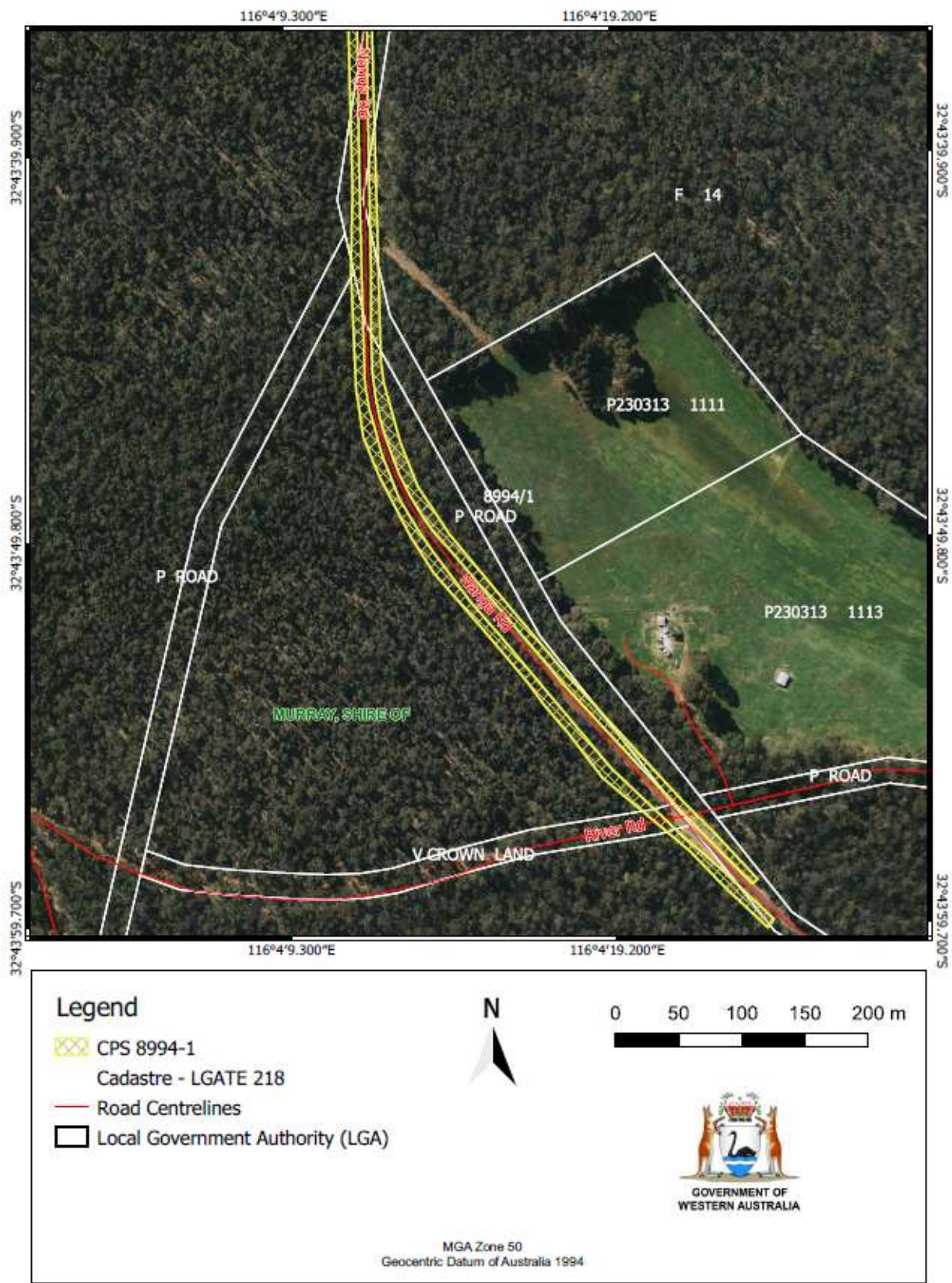


Figure 3: Map of the boundaries of the areas within which clearing may occur



Schedule 2

Location of Black cockatoo habitat trees

Emerge Associates (Emerge) (2021) Targeted Black Cockatoo Habitat Assessment - Nanga Road, Dwellingup. Unpublished report prepared for Shire of Murray. Doc No.: EP20-146(01)--002 TAA| Version: 1.

GDA 94		Black cockatoo habitat trees (DBH >50cm)	Potential black cockatoo hollow
Easting	Northing		
116.07100	-32.73091	Black cockatoo habitat tree	-
116.07097	-32.73085	Black cockatoo habitat tree	-
116.07097	-32.73083	Black cockatoo habitat tree	-
116.07088	-32.73078	Black cockatoo habitat tree	-
116.07033	-32.73010	Black cockatoo habitat tree	-
116.07021	-32.72984	Black cockatoo habitat tree	-
116.07015	-32.72965	Black cockatoo habitat tree	-
116.07008	-32.72957	Black cockatoo habitat tree	-
116.07222	-32.73208	Black cockatoo habitat tree	-
116.07201	-32.73193	Black cockatoo habitat tree	-
116.07176	-32.73168	Black cockatoo habitat tree	-
116.07171	-32.73162	Black cockatoo habitat tree	-
116.07158	-32.73147	Black cockatoo habitat tree	-
116.07152	-32.73144	Black cockatoo habitat tree	-
116.07149	-32.73143	Black cockatoo habitat tree	-
116.07103	-32.73091	Black cockatoo habitat tree	-
116.07181	-32.71728	Black cockatoo habitat tree	-
116.07182	-32.71729	Black cockatoo habitat tree	-
116.07235	-32.71800	Black cockatoo habitat tree	-
116.07235	-32.71844	Black cockatoo habitat tree	-
116.07255	-32.73267	Black cockatoo habitat tree	-
116.07330	-32.73323	Black cockatoo habitat tree	-
116.07194	-32.73218	Black cockatoo habitat tree	-
116.07193	-32.73212	Black cockatoo habitat tree	-
116.07003	-32.72927	Black cockatoo habitat tree	-
116.07003	-32.72900	Black cockatoo habitat tree	-
116.07003	-32.72885	Black cockatoo habitat tree	YES
116.07003	-32.72852	Black cockatoo habitat tree	-
116.07003	-32.72880	Black cockatoo habitat tree	-
116.07247	-32.71854	Black cockatoo habitat tree	-
116.07248	-32.71786	Black cockatoo habitat tree	-
116.07124	-32.71706	Black cockatoo habitat tree	-
116.07021	-32.73025	Black cockatoo habitat tree	-
116.07010	-32.73012	Black cockatoo habitat tree	-
116.07004	-32.72987	Black cockatoo habitat tree	-
116.06992	-32.72982	Black cockatoo habitat tree	-
116.07000	-32.72983	Black cockatoo habitat tree	-
116.06990	-32.72950	Black cockatoo habitat tree	-

GDA 94		Black cockatoo habitat trees (DBH >50cm)	Potential black cockatoo hollow
Easting	Northing		
116.06992	-32.72944	Black cockatoo habitat tree	-
116.06986	-32.72888	Black cockatoo habitat tree	-
116.07176	-32.73204	Black cockatoo habitat tree	-
116.07176	-32.73201	Black cockatoo habitat tree	-
116.07103	-32.73127	Black cockatoo habitat tree	-
116.07083	-32.73106	Black cockatoo habitat tree	-
116.07068	-32.73092	Black cockatoo habitat tree	-
116.07045	-32.73058	Black cockatoo habitat tree	-
116.07028	-32.73038	Black cockatoo habitat tree	-
116.07022	-32.73033	Black cockatoo habitat tree	-
116.06983	-32.72737	Black cockatoo habitat tree	-
116.06981	-32.72675	Black cockatoo habitat tree	-
116.06983	-32.72627	Black cockatoo habitat tree	-
116.06984	-32.72617	Black cockatoo habitat tree	-
116.06981	-32.72521	Black cockatoo habitat tree	-
116.06985	-32.72474	Black cockatoo habitat tree	-
116.06985	-32.72461	Black cockatoo habitat tree	-
116.06983	-32.72454	Black cockatoo habitat tree	-
116.06981	-32.72873	Black cockatoo habitat tree	-
116.06985	-32.72871	Black cockatoo habitat tree	-
116.06982	-32.72855	Black cockatoo habitat tree	-
116.06985	-32.72849	Black cockatoo habitat tree	-
116.06988	-32.72849	Black cockatoo habitat tree	-
116.06986	-32.72835	Black cockatoo habitat tree	-
116.06987	-32.72812	Black cockatoo habitat tree	-
116.06986	-32.72762	Black cockatoo habitat tree	-
116.07096	-32.72044	Black cockatoo habitat tree	-
116.07159	-32.71992	Black cockatoo habitat tree	-
116.07187	-32.71963	Black cockatoo habitat tree	-
116.06979	-32.72313	Black cockatoo habitat tree	-
116.06981	-32.72295	Black cockatoo habitat tree	-
116.06979	-32.72288	Black cockatoo habitat tree	-
116.06981	-32.72273	Black cockatoo habitat tree	-
116.07000	-32.72190	Black cockatoo habitat tree	-
116.06998	-32.72188	Black cockatoo habitat tree	-
116.07016	-32.72162	Black cockatoo habitat tree	-
116.07091	-32.72045	Black cockatoo habitat tree	-