

## Index

### Contents

Project Brief.....	2
Clearing Period.....	2
Calculations.....	2
Location Plan .....	4
Aerial Map .....	5
Photo .....	6
Letter of Support.....	19

## Project Brief

As part of the 2020/21 Budget funds have been allocated to some clearing works along Fawcett Road, Hamel. Fawcett Road is a main access road for local farmers, residents and produce farms. The section of Fawcett road from SLK 2000 to 4100 has a substantial amount of vegetation build-up which has resulted in the vegetation becoming overgrown and unmanageable. In some locations the vegetation has grown within the table drains which has resulted in the vegetation growing on a lean towards the road which has made it difficult to prune without compromising the tree structure.

The Shire have surveyed the area and limited the impact to 46 native trees which is substantially less than what is growing onsite.

## Clearing Period

Funds have been set aside as part of the 2020/21 Budget however it is likely this job will reoccur in FY 2021/22. Therefore the works are expected to commence in September 2020 and are expected to be completed by September 2022. The initial works will be scoping works with the actual clearing to be scheduled late 2020.

## Calculations

The clearing permit is for the section of Fawcett Road which is from SLK 2000 to 4100 which is 2.1km.

Road Reserve Width:	18m
Seal Width:	6m
Number of Trees:	46
<b>Estimated Hectares:</b>	<b>0.50 Hectares</b>

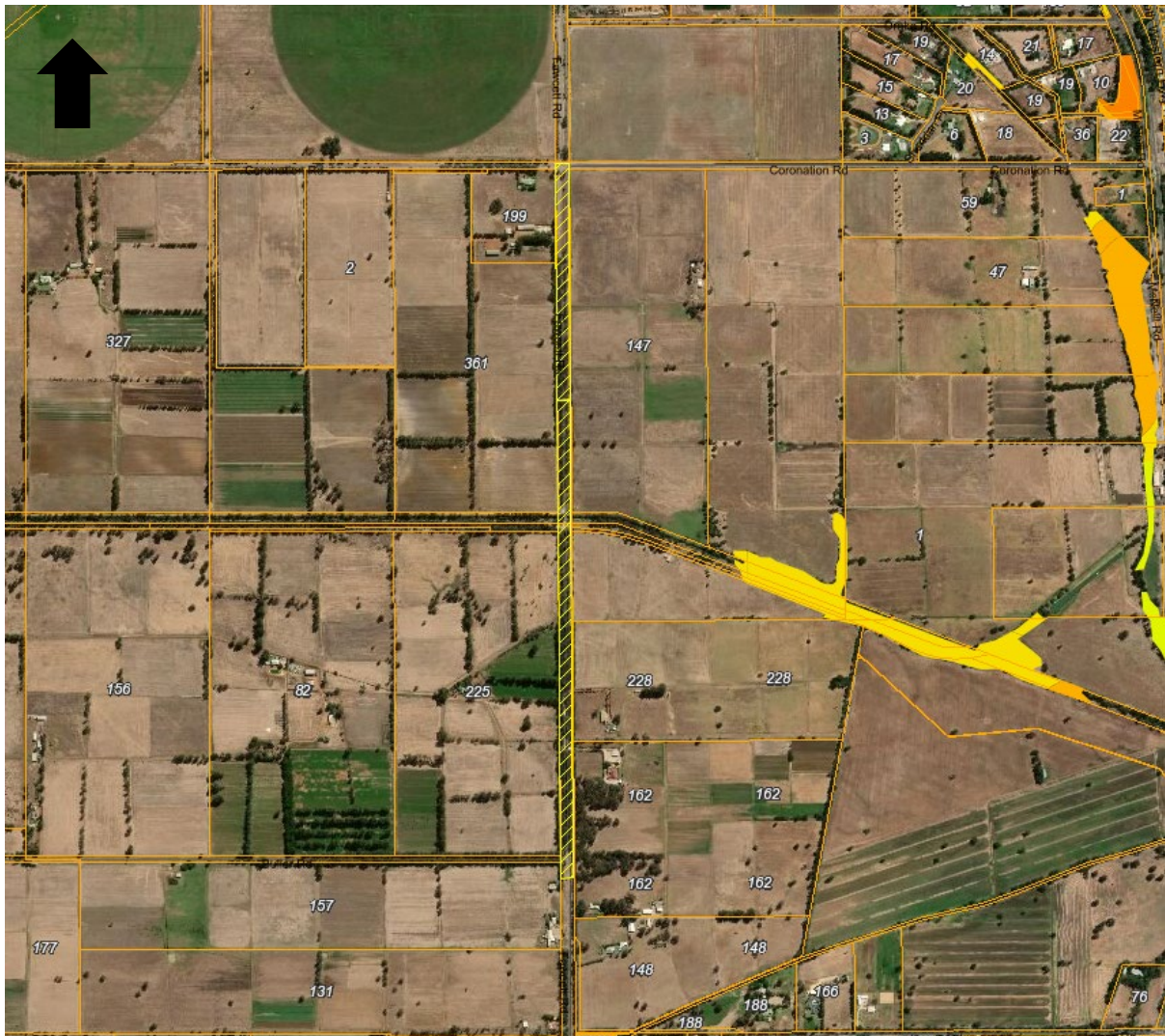
The native vegetation has been assessed and the table below indicates the Tree ID, Description, Trunk Diameter and Canopy Size.

Tree ID	Description	Diameter	Canopy
5000	<i>Corymbia Calophylla</i>	0.40	8
5002	<i>Corymbia Calophylla</i>	0.40	8
5003	<i>Corymbia Calophylla</i>	0.40	8
5004	<i>Melaleuca Raphiophylla</i>	0.40	8
5005	<i>Corymbia Calophylla</i>	0.30	7
5006	<i>Melaleuca Raphiophylla</i>	0.40	8
5007	<i>Melaleuca Raphiophylla</i>	0.40	8
5008	<i>Melaleuca Raphiophylla</i>	0.40	8
5009	<i>Melaleuca Raphiophylla</i>	0.30	7
5010	<i>Corymbia Calophylla</i>	0.30	7
5011	<i>Corymbia Calophylla</i>	0.30	7

<b>5012</b>	<i>Corymbia Calophylla</i>	0.40	8
<b>5013</b>	<i>Corymbia Calophylla</i>	0.50	10
<b>5014</b>	<i>Corymbia Calophylla</i>	0.60	12
<b>5015</b>	<i>Melaleuca Rapiophylla</i>	0.30	7
<b>5016</b>	<i>Melaleuca Rapiophylla</i>	0.30	7
<b>5017</b>	<i>Melaleuca Rapiophylla</i>	0.60	12
<b>5018</b>	<i>Corymbia Calophylla</i>	0.40	8
<b>5019</b>	<i>Corymbia Calophylla</i>	0.60	12
<b>5020</b>	<i>Corymbia Calophylla</i>	0.30	7
<b>5021</b>	<i>Corymbia Calophylla</i>	0.70	14
<b>5022</b>	<i>Corymbia Calophylla</i>	0.30	7
<b>5023</b>	<i>Melaleuca Rapiophylla</i>	0.30	7
<b>5025</b>	<i>Corymbia Calophylla</i>	0.40	8
<b>5026</b>	<i>Melaleuca Rapiophylla</i>	0.60	12
<b>5027</b>	<i>Corymbia Calophylla</i>	0.30	7
<b>5028</b>	<i>Corymbia Calophylla</i>	0.40	8
<b>5029</b>	<i>Corymbia Calophylla</i>	0.60	12
<b>5030</b>	<i>Corymbia Calophylla</i>	0.40	8
<b>5031</b>	<i>Corymbia Calophylla</i>	0.50	10
<b>5032</b>	<i>Melaleuca Rapiophylla</i>	0.20	6
<b>5033</b>	<i>Melaleuca Rapiophylla</i>	0.20	6
<b>5034</b>	<i>Melaleuca Rapiophylla</i>	0.20	6
<b>5035</b>	<i>Melaleuca Rapiophylla</i>	0.30	7
<b>5036</b>	<i>Melaleuca Rapiophylla</i>	0.30	7
<b>5037</b>	<i>Melaleuca Rapiophylla</i>	0.30	7
<b>5038</b>	<i>Melaleuca Rapiophylla</i>	0.30	7
<b>5039</b>	<i>Corymbia Calophylla</i>	0.40	8
<b>5040</b>	<i>Corymbia Calophylla</i>	0.30	7
<b>5041</b>	<i>Corymbia Calophylla</i>	0.30	7
<b>5042</b>	<i>Corymbia Calophylla</i>	0.40	8
<b>5043</b>	<i>Corymbia Calophylla</i>	0.40	8
<b>5044</b>	<i>Corymbia Calophylla</i>	0.30	7
<b>5045</b>	<i>Melaleuca Rapiophylla</i>	0.30	7
<b>5046</b>	<i>Corymbia Calophylla</i>	0.30	7
<b>5047</b>	<i>Corymbia Calophylla</i>	0.40	8

## Location Plan

The section of Fawcett Road runs south from Coronation Road to Buller Road as per the below diagram.



Aerial Map



Photo



Tree ID	Direction	Location	Observations
5000	South	East Side	No visible signs of nesting or hollow points.



Tree ID	Direction	Location	Observations
5004	South	East Side	No visible signs of nesting or hollow points. Tree is growing within the table drain and is dropping limbs as shown in the photo above.



Tree ID	Direction	Location	Observations
5005	South	East Side	No visible signs of nesting or hollow points. Tree is growing within table drain which so the tree is naturally leaning towards the road.





Tree ID	Direction	Location	Observations
5006	South	West Side	No visible signs of nesting or hollow points.



Tree ID	Direction	Location	Observations
5007	South	West Side	No visible signs of nesting or hollow points.



Tree ID	Direction	Location	Observations
5011	South	East Side	No visible signs of nesting or hollow points. Tree is growing within table drain which so the tree is naturally leaning towards the road.



Tree ID	Direction	Location	Observations
5012	South	East Side	No visible signs of nesting or hollow points. Tree is growing within table drain which so the tree is naturally leaning towards the road.



Tree ID	Direction	Location	Observations
5013-5014	South	West Side	No visible signs of nesting or hollow points. Tree is leaning towards road and is within 1m of the edge of seal.



Tree ID	Direction	Location	Observations
5015 – 5016	South	West Side	No visible signs of nesting or hollow points. Trees are growing within the table drain.



Tree ID	Direction	Location	Observations
5019	South	East Side	No visible signs of nesting or hollow points. Trees are growing within the table drain with canopy leaning towards the road.



Tree ID	Direction	Location	Observations
5020 – 5021	South	East	No visible signs of nesting or hollow points. Trees are growing within the table drain with canopy leaning towards the road.





Tree ID	Direction	Location	Observations
5025 - 5026	South	East Side	No visible signs of nesting or hollow points. Trees are growing with a natural lean towards the road with substantial limbs being within the 6m height clearance.



Tree ID	Direction	Location	Observations
5040 – 5044	South	West Side	No visible signs of nesting or hollow points and growing within 1m of the edge of seal.

CAPOGRECO



FARMS

Feeding your family  
by our family since 1988

Monday, June 22<sup>nd</sup> 2020

**Letter of Support**

To whom it may concern,

This letter is to show support for the clearing of vegetation on the side of road verges including McClure Road & Fawcett Road of Waroona.

The trees and branches are leaning over the road and a danger to our trucks and drivers, when passing another car they move to the side of the bitumen and the cabs of our trucks are hitting branches and I fear if they happen to pass another large vehicle and are forced further off the road they may do severe damage to our fleet.

I am in full support of this and know it will reduce any future incidents.

Thank you.

Yours Sincerely,

A handwritten signature in black ink, appearing to read 'Bruno Capogreco', is written over a horizontal dotted line.

Bruno Capogreco  
Director  
Capogreco Farms  
0407 521 157

