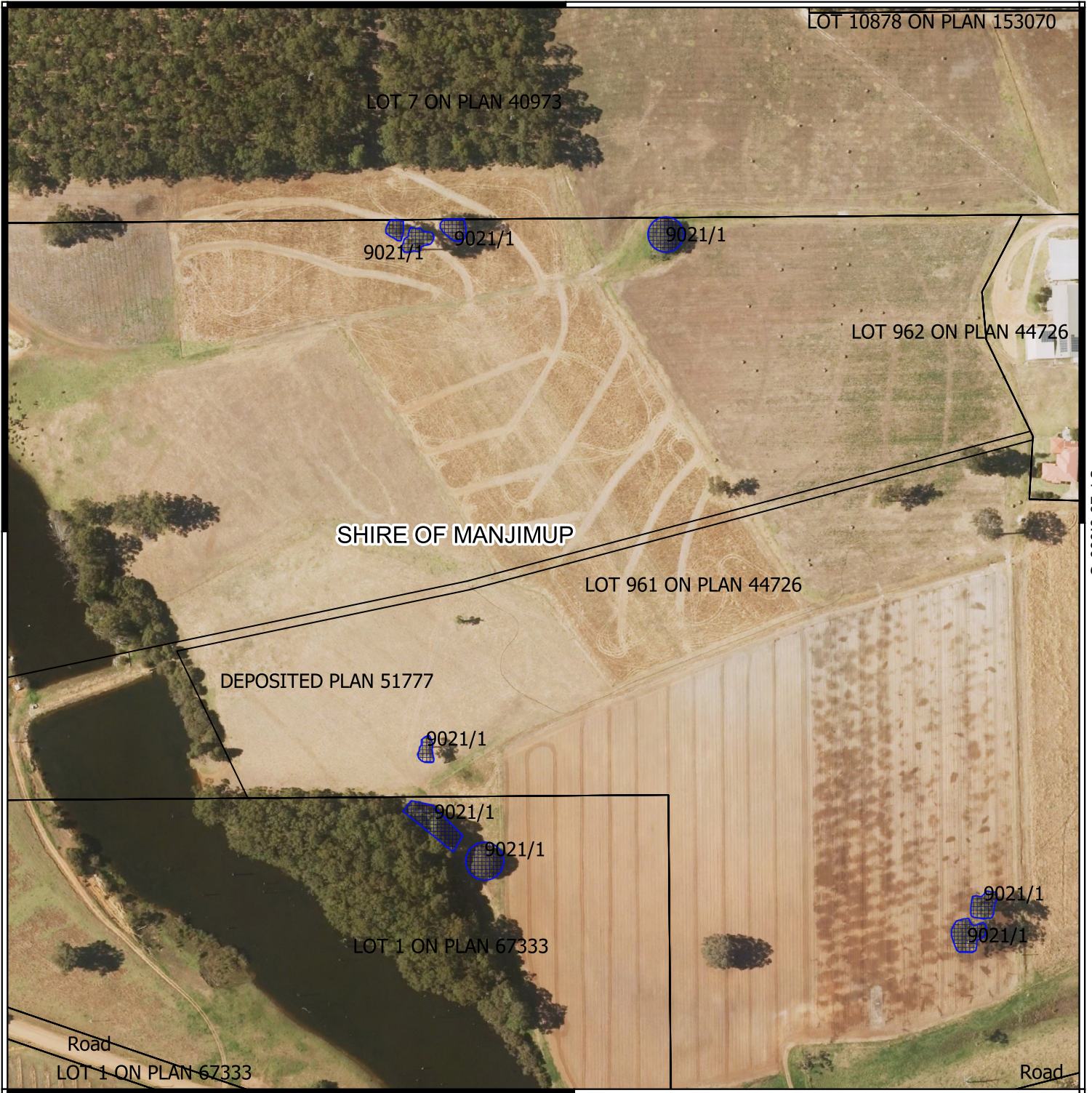



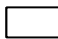

Plan 9021/1

116°11'42.000"E



116°11'42.000"E

Legend

-  CPS areas applied to clear
-  Land TenureLGATE - 226
-  Local Government Authorities

Image



0 50 100 150 200 m



1:3667

MGA Zone 50
Geocentric Datum of Australia 1994

Officer delegated under section 20 of the
Environmental Protection Act 1986



GOVERNMENT OF
WESTERN AUSTRALIA