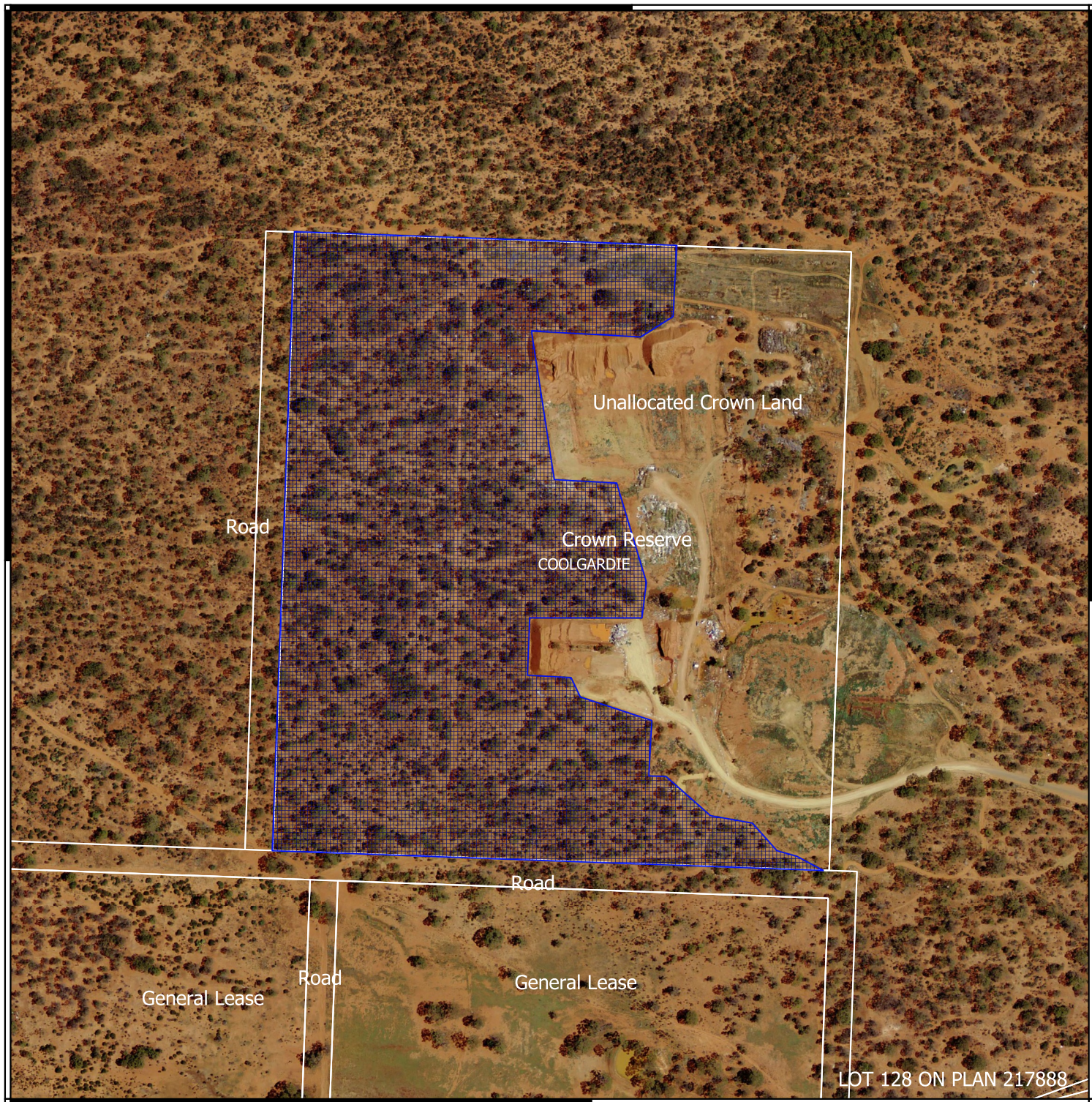


CPS 9080/1 - Map


121°7'48.000"E

30°57'0.000"S

30°57'0.000"S



121°7'48.000"E

 CPS areas applied to clear

 Local Government Areas

 Localities - Landgate

Land Tenure (Landgate - 226)



0 100 200 300 400 m



1:6000

MGA Zone 50
Geocentric Datum of Australia 1994



GOVERNMENT OF
WESTERN AUSTRALIA