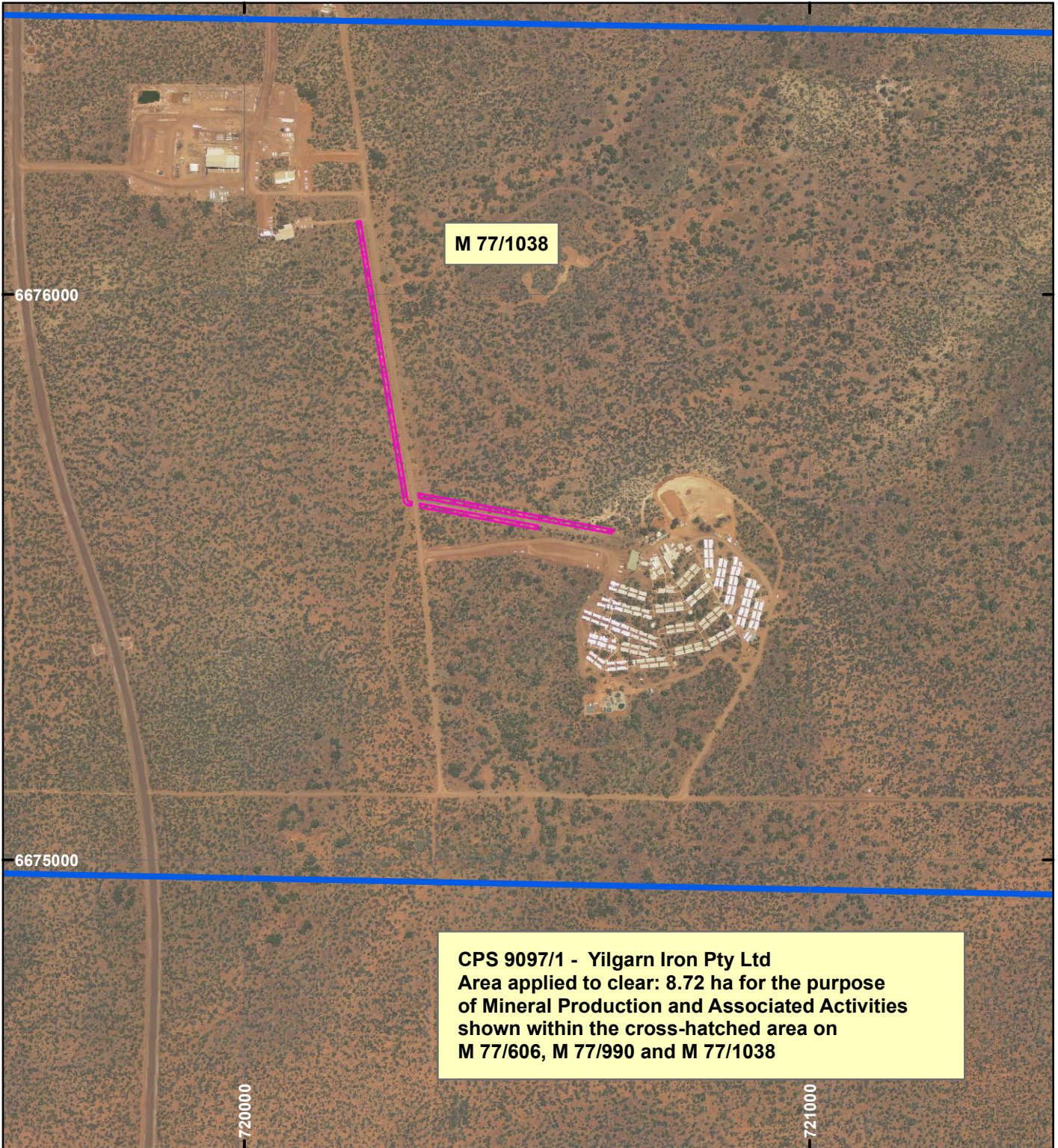


CPS 9097/1 - Yilgarn Iron Pty Ltd



CPS 9097/1 - Yilgarn Iron Pty Ltd
Area applied to clear: 8.72 ha for the purpose
of Mineral Production and Associated Activities
shown within the cross-hatched area on
M 77/606, M 77/990 and M 77/1038

LEGEND

 **Clearing Instruments**

 **Mining Tenements**

Orthophotography sourced from Landgate



Scale 1:10,000

(Approximate when reproduced at A4)

Geocentric Datum Australia 1994

Note: the data in this map have not been projected. This may result in geometric distortion or measurement inaccuracies.

..... Date

Officer with delegated authority under Section 20 of the Environmental Protection Act 1986

Information derived from this map should be confirmed with the data custodian acknowledged by the agency acronym in the legend.



WA Crown Copyright 2002