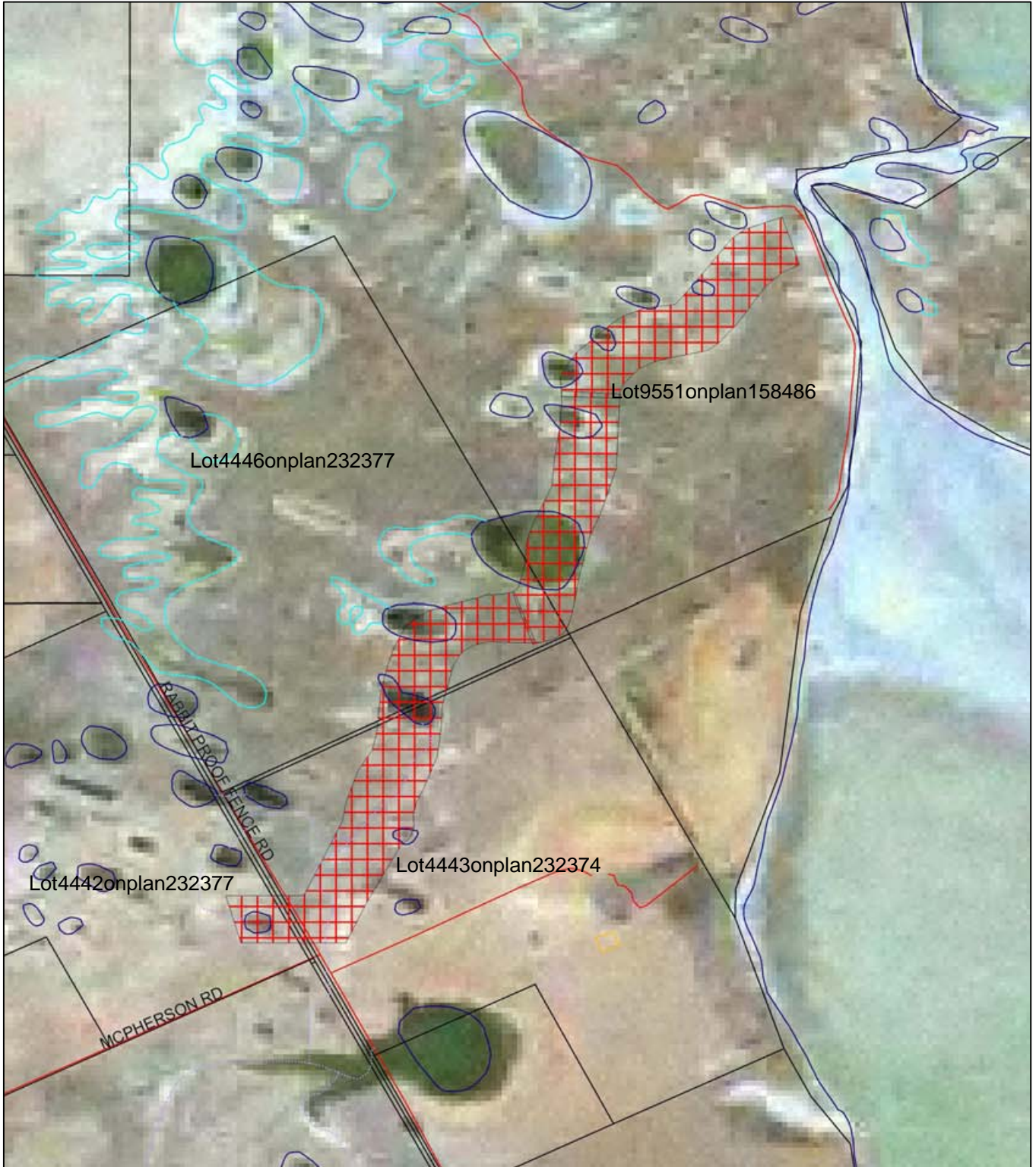
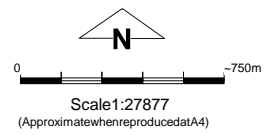


# Plan910/1-2



## LEGEND

- |  |   |   |  |
|--|---|---|--|
| <ul style="list-style-type: none"> <li> Road Centrelines - DLI 1/5/04</li> <li> Cadastre - DLI 1/12/05</li> <li> Towns - DLI 8/04</li> <li> Carnamah 1.4m Orthomosaic - DLI Mar01</li> <li> Badgingarra 1.4m Orthomosaic - DLI 01</li> <li><b>Clearing Instruments</b></li> <li> Areas Subject to Conditions</li> <li><b>Hydrography, linear - DOE 1/2/04</b></li> <li> Area Subject to Inundation (cont)</li> </ul> | <ul style="list-style-type: none"> <li> Braided Stream Area</li> <li> Claypan</li> <li> Coastal Waterline</li> <li> Dam Wall</li> <li> Dam Wall - carrying road</li> <li> Drain - major</li> <li> Drain - minor</li> <li> Earth Dam</li> <li> Estuarine</li> <li> Flood Limit Area</li> <li> Flow Direction Arrow</li> <li> Foreshore Flats or Sandbank</li> <li> Groyne Area</li> <li> Lake - artificial</li> <li> Lake - non-perennial</li> <li> Lake - perennial (cont)</li> </ul> | <ul style="list-style-type: none"> <li> Levee Bank</li> <li> Marine Construction - wharf/jetty</li> <li> Marsh Area</li> <li> Natural Pool - non-perennial</li> <li> Natural Pool - perennial</li> <li> Reef Area</li> <li> Rock Wash Offshore</li> <li> Sump</li> <li> Supply Channel</li> <li> Swamp - non-perennial</li> <li> Swamp - perennial</li> <li> Tidal Flat</li> <li> Wash Area</li> <li> Water Reservoir</li> <li> Watercourse - indefinite</li> <li> Watercourse - major, non-perennial (cont)</li> </ul> | <ul style="list-style-type: none"> <li> Watercourse - major, perennial</li> <li> Watercourse - minor, non-perennial</li> <li> Watercourse - minor, perennial</li> <li> Watercourse Bank - non-perennial</li> <li> Watercourse Bank - perennial</li> <li> Waterfalls</li> </ul> <p><b>Western Australia ETM 25m 321 - GA 99</b></p> |
|--|---|---|--|



Geocentric Datum Australia 1994  
*Note: the data in this map have not been projected. This may result in geometric distortion or measurement inaccuracies.*

.....Date.....

Officer with delegated authority under Section 20 of the Environmental Protection Act 1986

Information derived from this map should be confirmed with the data custodian acknowledged by the agency acronym in the legend.



WACrown Copyright 2002