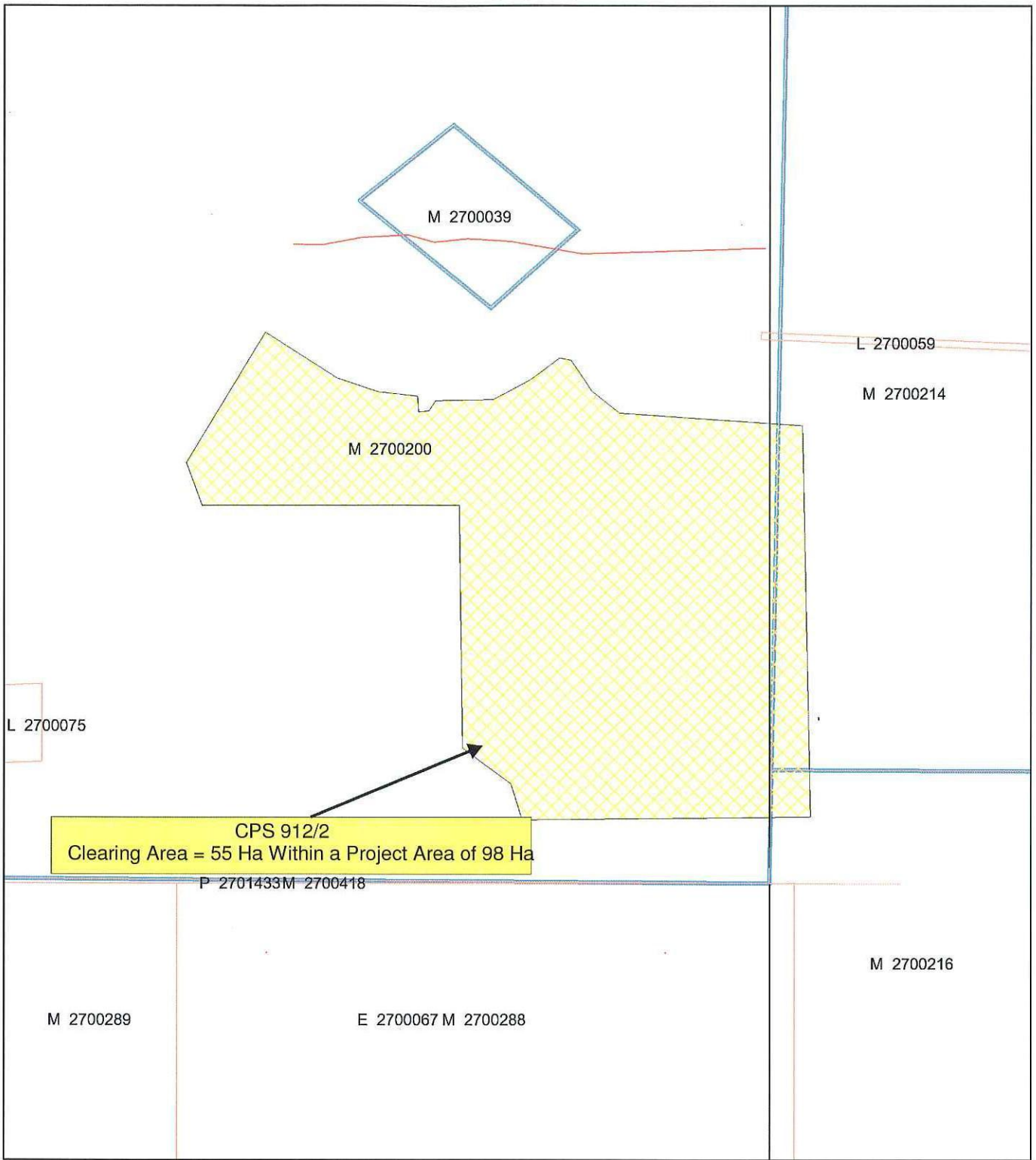


# CPS 912/2



## LEGEND

- |                                    |                               |                           |
|------------------------------------|-------------------------------|---------------------------|
| Land parcels related to instrument | Areas Approved to Clear       | Mining Tenements - DOIR_1 |
| Clearing Instruments               | Road Centrelines - DLI 1/5/04 |                           |
| Areas Applied to Clear             | Cadastre - DLI 1/12/05        |                           |
| Areas Subject to Conditions (cont) | Towns - DLI 8/04              |                           |
|                                    | Petroleum Titles - DOIR       |                           |



Scale 1:13224  
(Approximate when reproduced at A4)  
Geocentric Datum Australia 1994

*Note: the data in this map have not been projected. This may result in geometric distortion or measurement inaccuracies.*

Date 15.06.06

Kim Anderson  
Officer with delegated authority under Section 20 of the Environmental Protection Act 1986

Information derived from this map should be confirmed with the data custodian acknowledged by the agency acronym in the legend.