

CPS 9134/1 - Map b

117°0.750'E

117°0.900'E

117°1.050'E

117°1.200'E

117°1.350'E

34°17.550'S

34°17.700'S

34°17.850'S

34°18.000'S

34°18.150'S

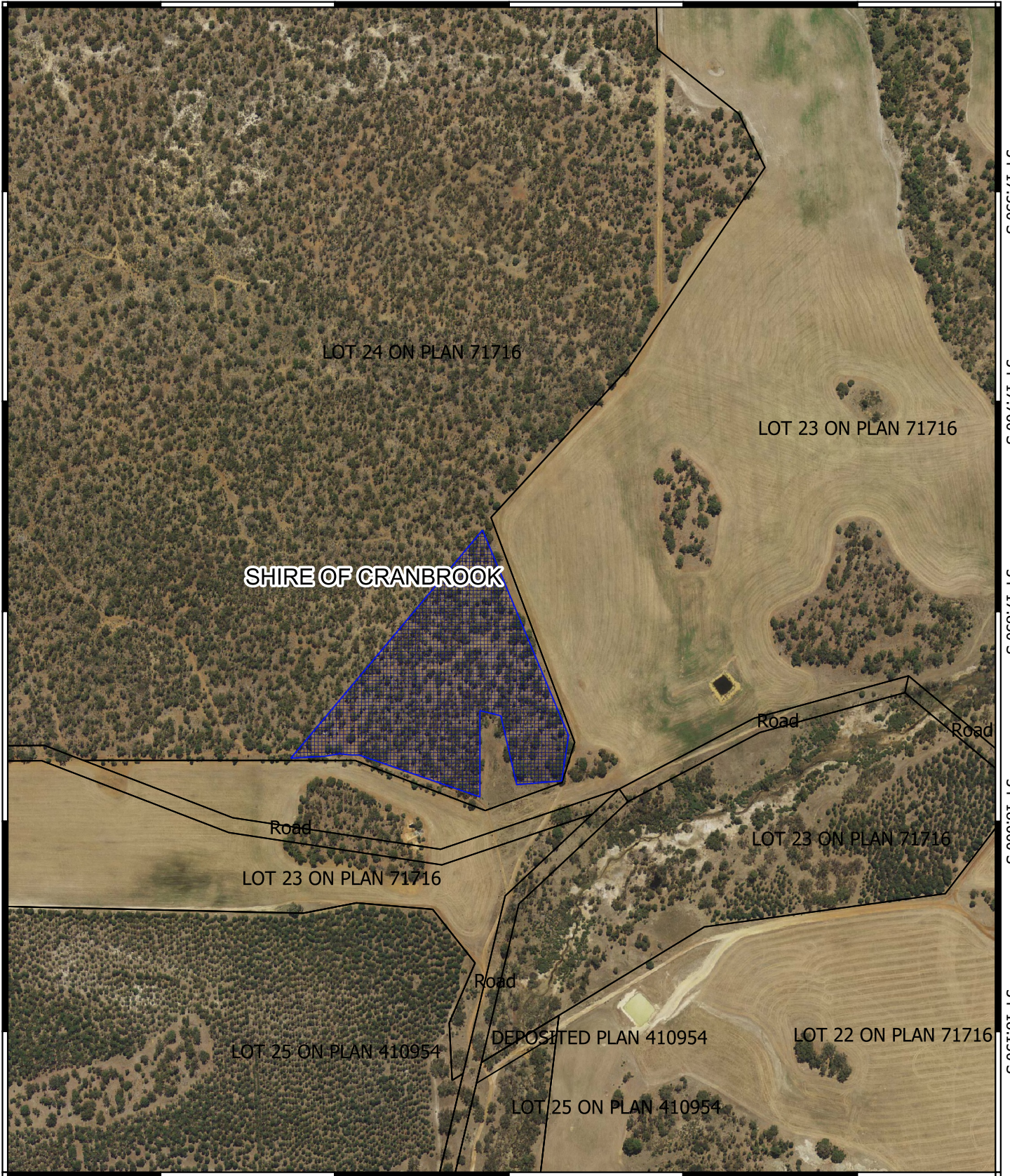
34°17.550'S

34°17.700'S

34°17.850'S

34°18.000'S

34°18.150'S



117°0.750'E

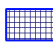
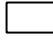

117°0.900'E

117°1.050'E

117°1.200'E

117°1.350'E

Legend

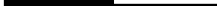
-  CPS areas applied to clear
-  Land TenureLGATE - 226
-  Local Government Authority

Image



1:7000

0 100 200 m



MGA 94
Geocentric Datum of Australia 1994



**GOVERNMENT OF
WESTERN AUSTRALIA**