

CPS 9139/1 - Map c

115°47.370'E

115°47.532'E

115°47.694'E

115°47.856'E

31°44.616'S

31°44.784'S

31°44.952'S

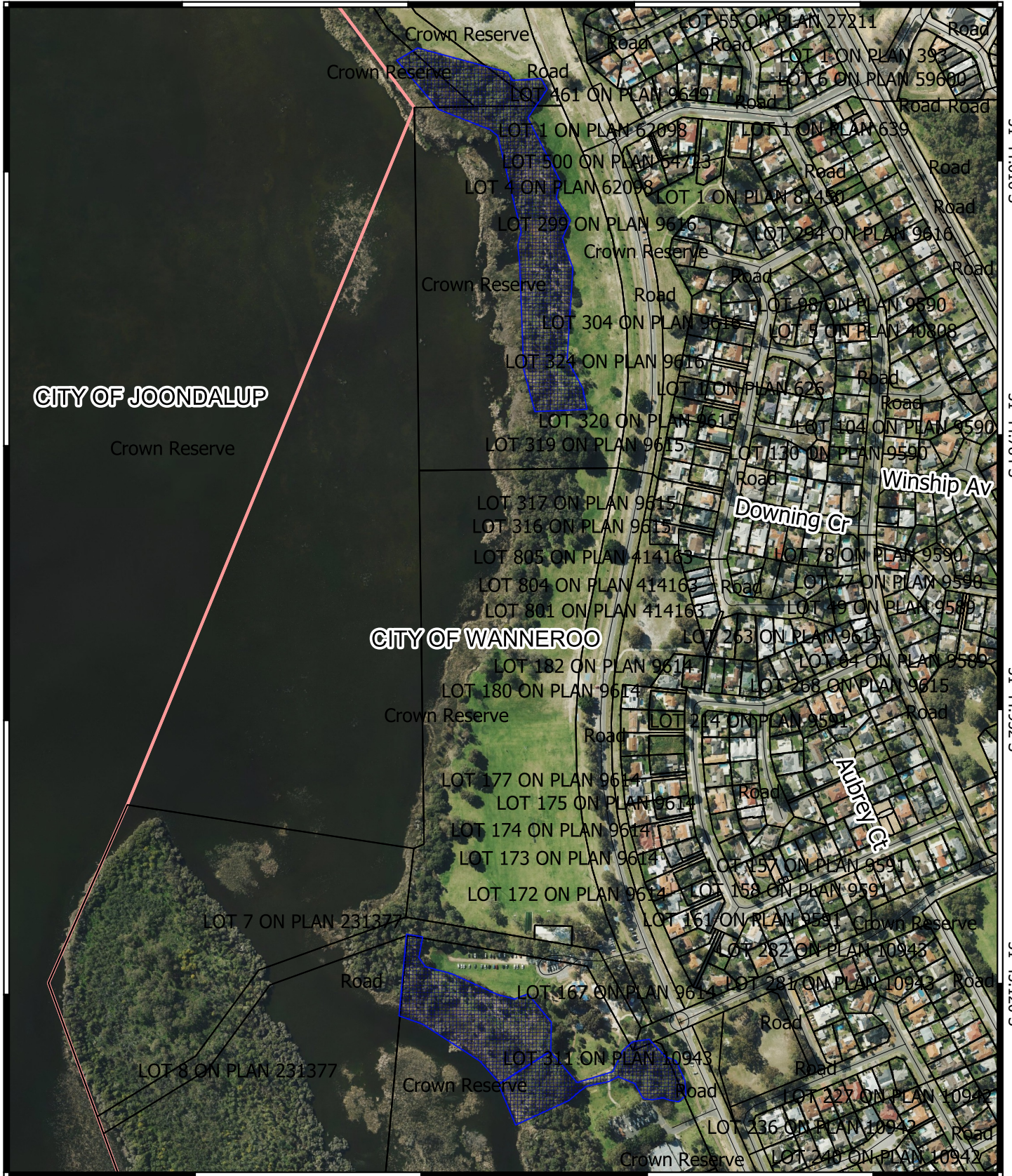
31°45.120'S

31°44.616'S

31°44.784'S

31°44.952'S

31°45.120'S




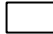

115°47.370'E

115°47.532'E



115°47.694'E

115°47.856'E

Legend

-  CPS areas applied to clear
-  Land TenureLGATE - 226
-  Local Government Authorities

Road Centrelines

-  Highway
-  Local Rd - Sealed

N



1:6000

0 75 150 225 300 m



MGA 94
Geocentric Datum of Australia 1994



**GOVERNMENT OF
WESTERN AUSTRALIA**