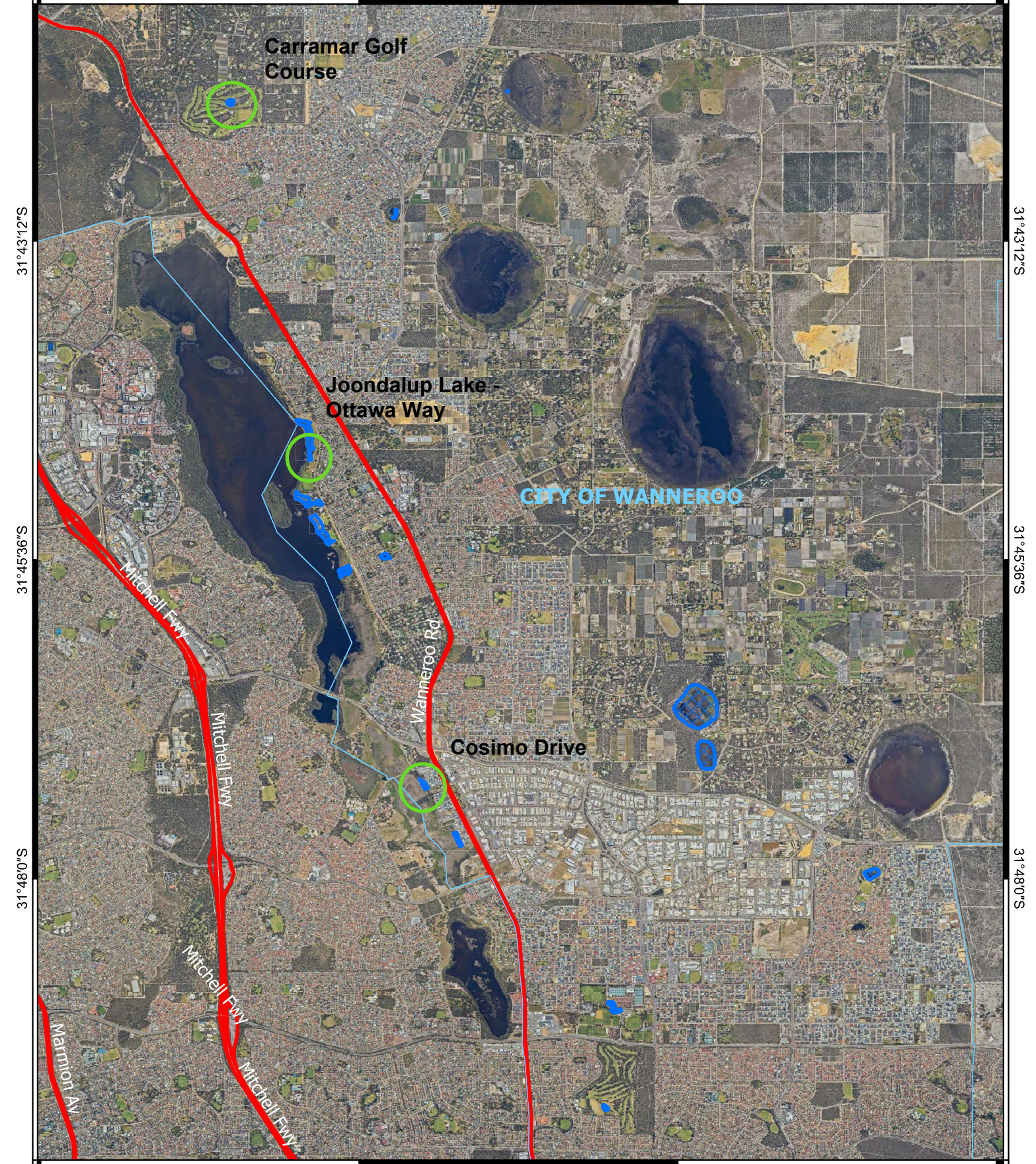


# CPS 9139/3 - Context map

115°45'36"E      115°48'0"E      115°50'24"E      115°52'48"E




115°45'36"E      115°48'0"E      115°50'24"E      115°52'48"E

**Legend**

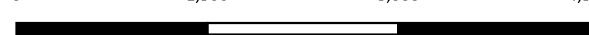
- CPS areas applied to clear
- Local Government Authorities
- New areas under the amendment application

**Road Centrelines**

- Freeway
- Highway




0      1,500      3,000      4,500 m



1:45,000

Projection: GDA 2020



**GOVERNMENT OF  
WESTERN AUSTRALIA**