

# CPS 9139/3 - Map G

115°49'5"E

115°49'8"E

31°42'4"S

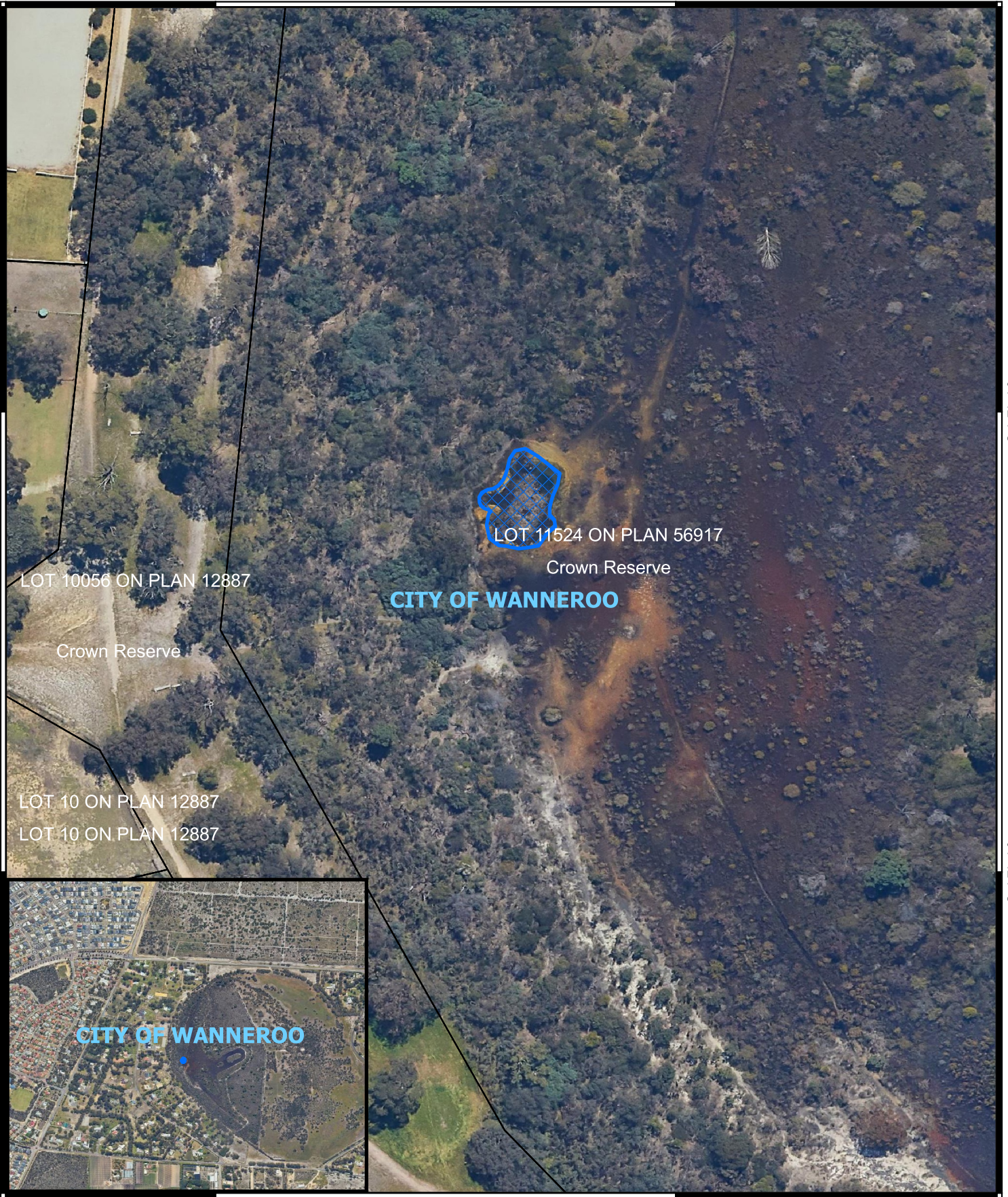
31°42'4"S

31°42'7"S




31°42'7"S

115°49'5"E

115°49'8"E



## Legend

-  CPS areas applied to clear
-  Land Tenure (LGATE\_226) - SLIP
-  Local Government Authorities

