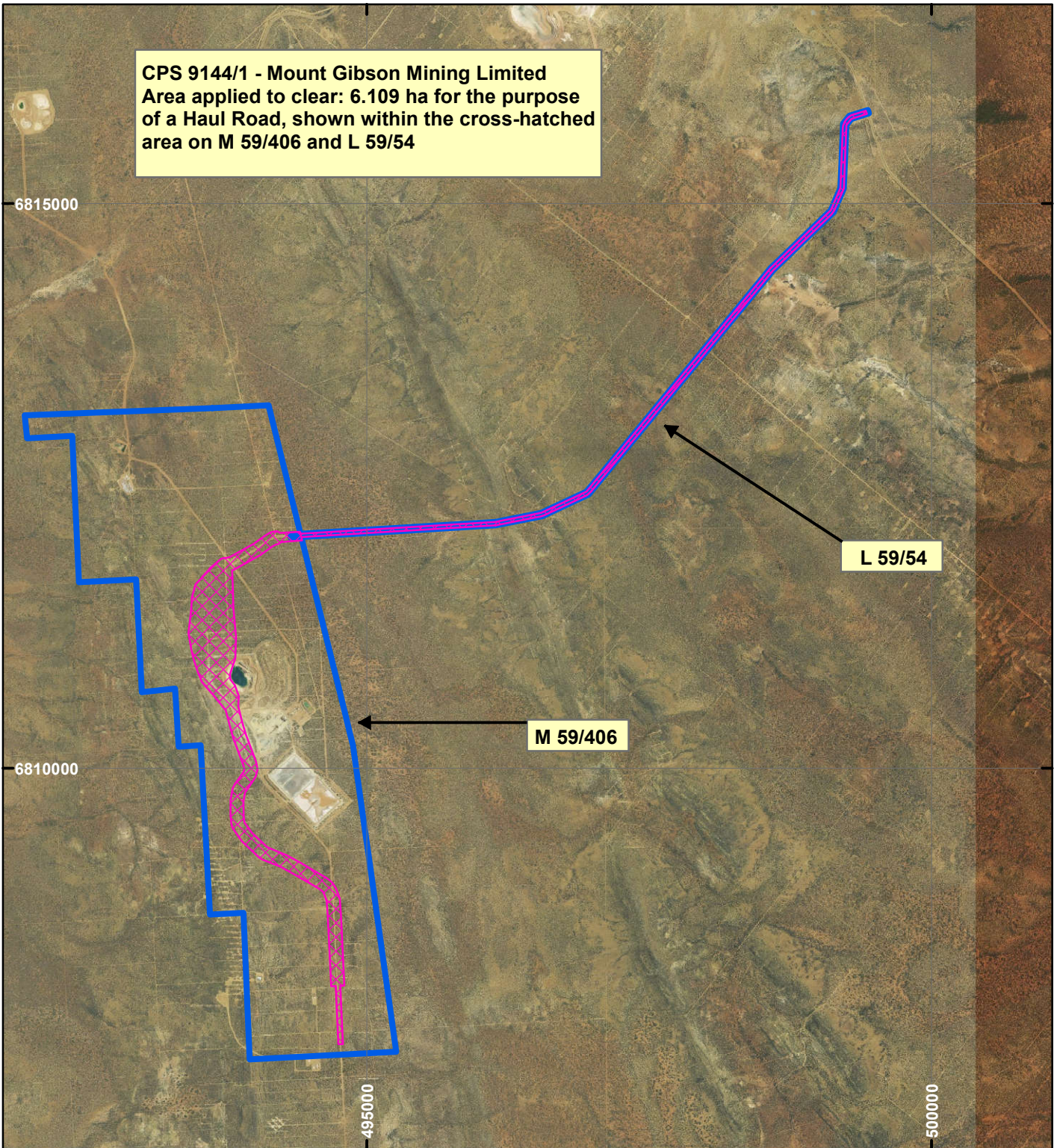


# CPS 9144/1 - Mount Gibson Mining Limited

CPS 9144/1 - Mount Gibson Mining Limited  
 Area applied to clear: 6.109 ha for the purpose  
 of a Haul Road, shown within the cross-hatched  
 area on M 59/406 and L 59/54

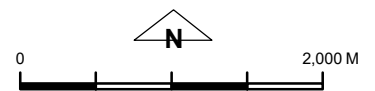


## LEGEND

 Clearing Instruments

 Mining Tenements

Orthophotography sourced from Landgate



Scale 1:50,000

(Approximate when reproduced at A4)

Geocentric Datum Australia 1994

Note: the data in this map have not been projected. This may result in geometric distortion or measurement inaccuracies.

..... Date .....

Officer with delegated authority under Section 20 of the Environmental Protection Act 1986

Information derived from this map should be confirmed with the data custodian acknowledged by the agency acronym in the legend.



WA Crown Copyright 2002