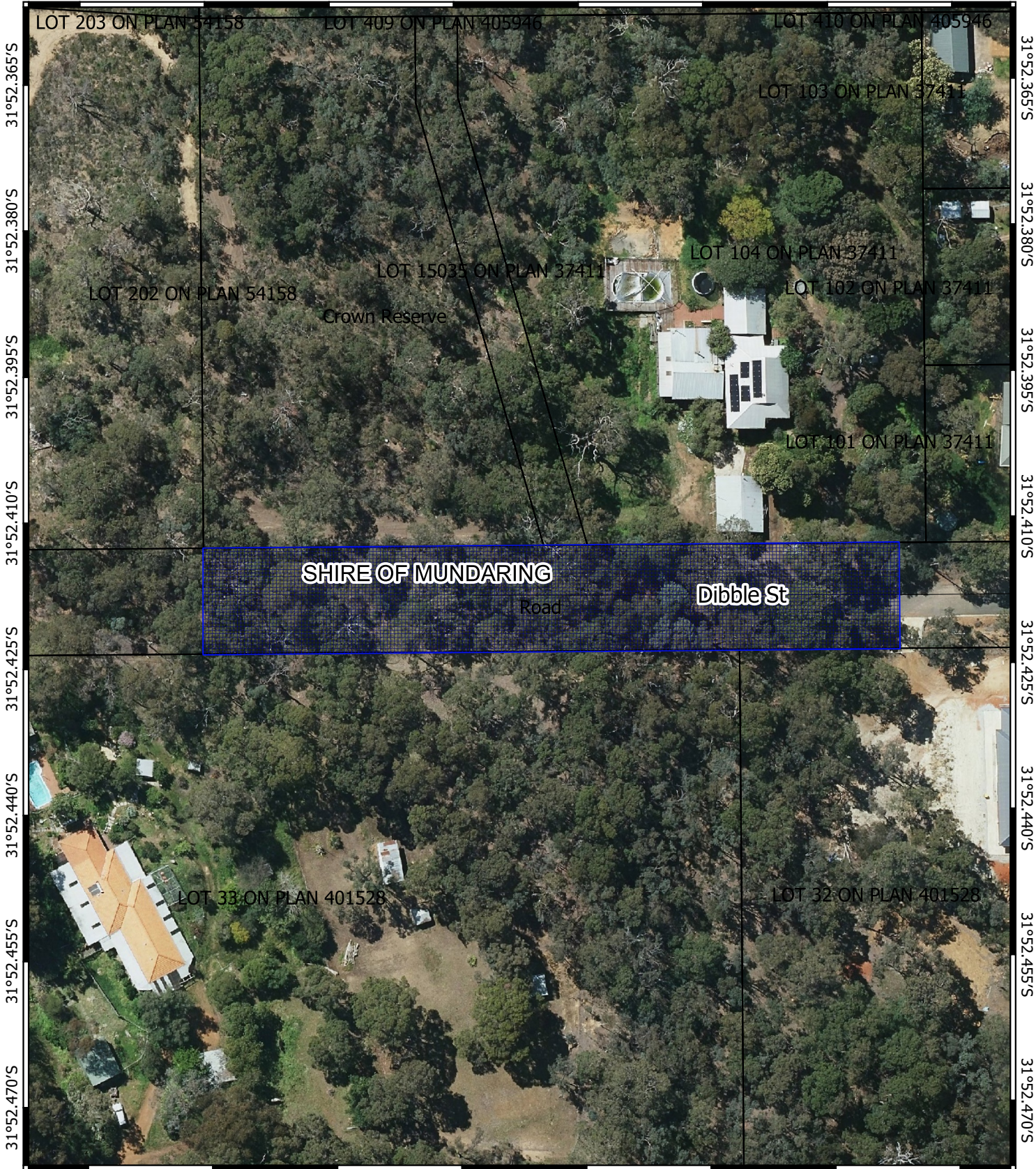


# CPS 9161/1 - Map

116°12.135'E 116°12.150'E 116°12.165'E 116°12.180'E 116°12.195'E 116°12.210'E 116°12.225'E 116°12.240'E


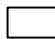




31°52.365'S  
31°52.380'S  
31°52.395'S  
31°52.410'S  
31°52.425'S  
31°52.440'S  
31°52.455'S  
31°52.470'S

31°52.365'S  
31°52.380'S  
31°52.395'S  
31°52.410'S  
31°52.425'S  
31°52.440'S  
31°52.455'S  
31°52.470'S

116°12.135'E 116°12.150'E 116°12.165'E 116°12.180'E 116°12.195'E 116°12.210'E 116°12.225'E 116°12.240'E

## Legend

-  CPS areas applied to clear
-  Land TenureLGATE - 226
-  Local Government Authorities

Road Centrelines  
 Local Rd - Sealed

Image



1:1000

0 10 20 30 m



MGA 94  
Geocentric Datum of Australia 1994



**GOVERNMENT OF  
WESTERN AUSTRALIA**