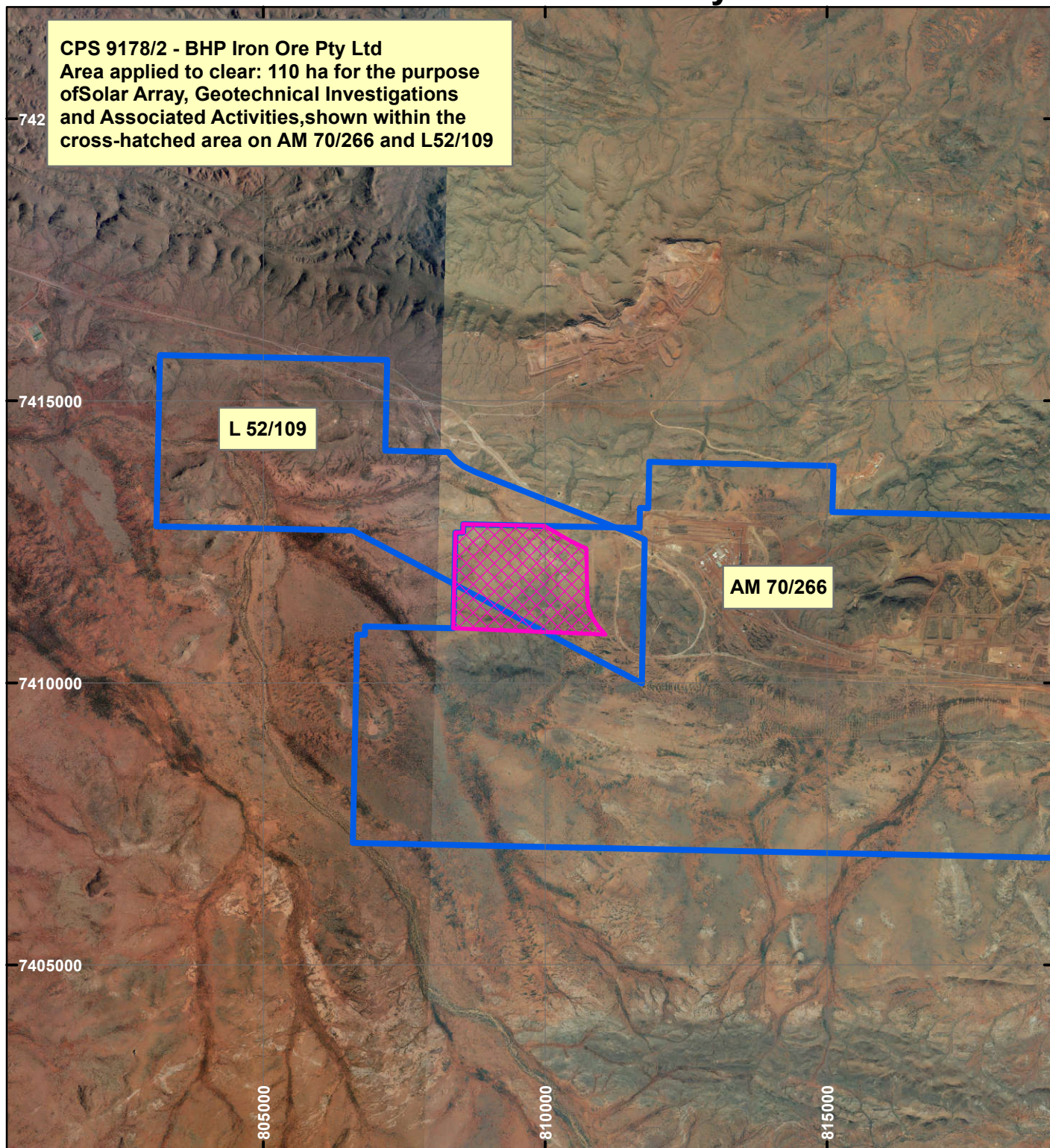


CPS 9178/2 - BHP Iron Ore Pty Ltd

CPS 9178/2 - BHP Iron Ore Pty Ltd
Area applied to clear: 110 ha for the purpose
of Solar Array, Geotechnical Investigations
and Associated Activities, shown within the
cross-hatched area on AM 70/266 and L52/109



LEGEND

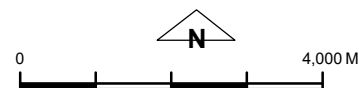


Clearing Instruments



Mining Tenements

Orthophotography sourced from Landgate



Scale 1:100,000

(Approximate when reproduced at A4)

Geocentric Datum Australia 1994

Note: the data in this map have not been
projected. This may result in geometric
distortion or measurement inaccuracies.

..... Date

Officer with delegated authority under Section 20 of
the Environmental Protection Act 1986

Information derived from this map should be
confirmed with the data custodian acknowledged
by the agency acronym in the legend.



WA Crown Copyright 2002