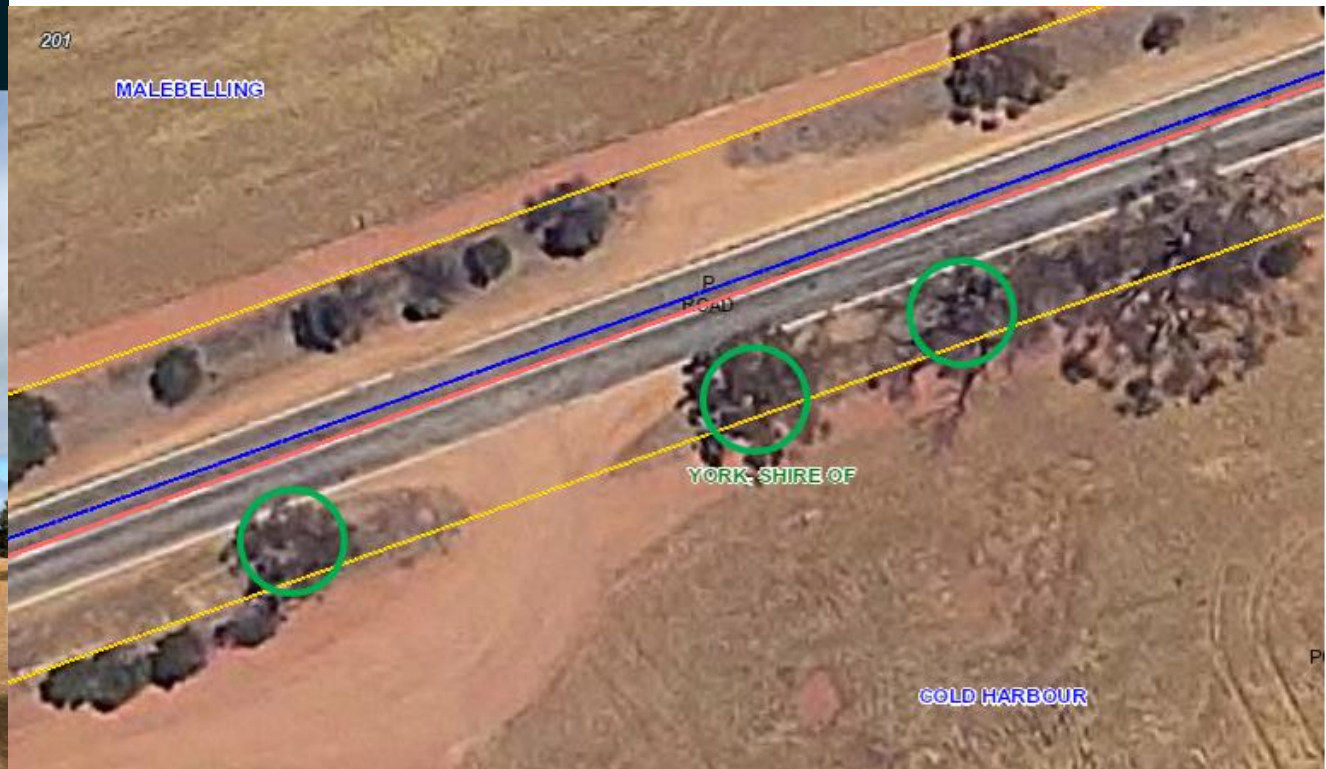


Area 1	SLK 3.59-3.62	4330001 - York-Tammin Rd (Goldfields Rd)
Clearance Details	Removal of three trees creating a sight line obstruction for vehicles exiting from property. Area of canopy approximately 100m ² .	



[Link to TEC and Black Cockatoo Assessments](#)

The proposed removal includes Tree 1 identified in Black Cockatoo Assessment – no large hollows.
 Tree 2 from the assessment is proposed to remain.

Area 2	SLK 18.73-18.87	4330001 - York-Tammin Rd (Goldfields Rd)
Clearance Details	Removal of two trees that would be close to widened road surface. Area of canopy approximately 70m ² . Pruning of other trees where necessary.	

A
4330001

York - Tammin Rd
0019.04

SINGLE
Lat/Long: -31.849891, 116.999597
Created on: 7/09/2022 10:18:57 AM



[Link to TEC and Black Cockatoo Assessments](#)
 The proposed removal includes Tree 83 identified in Black Cockatoo Assessment – no large hollows.
 Trees 82, 84-87 to remain.

Area 3	SLK 19.68-19.76	4330001 - York-Tammin Rd (Goldfields Rd)
Clearance Details	Removal of five trees that would be close to widened road surface. Area of canopy approximately 70m ² . Pruning of other trees where necessary.	



[Link to TEC and Black Cockatoo Assessments](#)

Trees 80 and 81 to be removed – offset project recommended.

This Area meets the criteria of the TEC Eucalypt Woodlands. Vegetation on private property not to be impacted.

Area 4	SLK 21.30-21.65	4330001 - York-Tammin Rd (Goldfields Rd)
Clearance Details	Only pruning where necessary.	



[Link to TEC and Black Cockatoo Assessments](#)
Trees 74-79 to remain but pruned where necessary

Area 5	SLK 22.07-23.03	4330001 - York-Tammin Rd (Goldfields Rd)
Clearance Details	Only pruning where necessary. Road could be widened to North side and 50m barrier installed in front of larger gum trees.	



[Link to TEC and Black Cockatoo Assessments](#)

Trees 19-73 to remain but pruned where necessary.

Area 6	SLK 23.54-23.56	4330001 - York-Tammin Rd (Goldfields Rd)
Clearance Details	Removal of one tree (Tree 17) Approximately 35m ² .	

A
4330001
York - Tammin Rd
0023.52
Lat/Long: -31.834497, 117.042357
Created on: 7/09/2022 11:06:08 AM
SINGLE

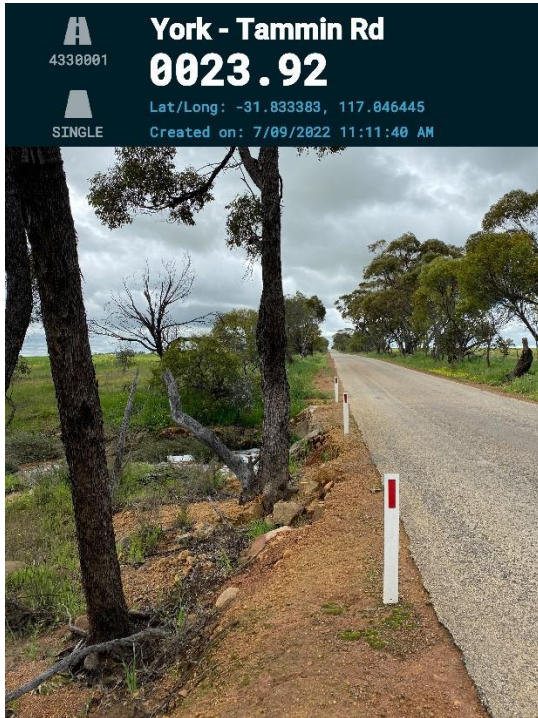


[Link to TEC and Black Cockatoo Assessments](#)

Tree 17 to be removed – identified large hollows – offset may be required.

Tree 18 to remain.

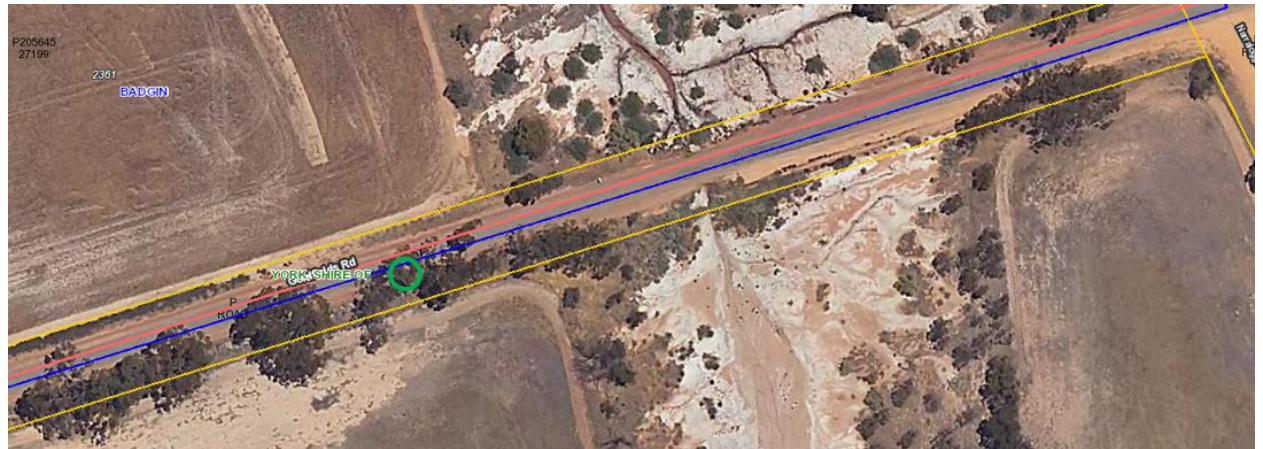
Area 7	SLK 23.93-24.65	4330001 - York-Tammin Rd (Goldfields Rd)
Clearance Details	Removal of two trees to allow for widening of road surface and extension of culvert – approximately 70m ² . No other trees to be removed in this section – pruning only.	



Link to TEC and Black Cockatoo Assessments

Proposed trees for removal not identified in assessments.
Trees 9-15 to remain in addition to tree identified by DWER.

Area 8	SLK 25.04-25.08	4330001 - York-Tammin Rd (Goldfields Rd)
Clearance Details	Removal of one tree that is leaning towards road (Approximately 35m ²), prune several large overhanging branches to prevent lane deviation of high vehicles.	



[Link to TEC and Black Cockatoo Assessments](#)

Tree 4 proposed for removal – no large hollows.
Trees 3, 5-8 to remain but pruned where necessary.