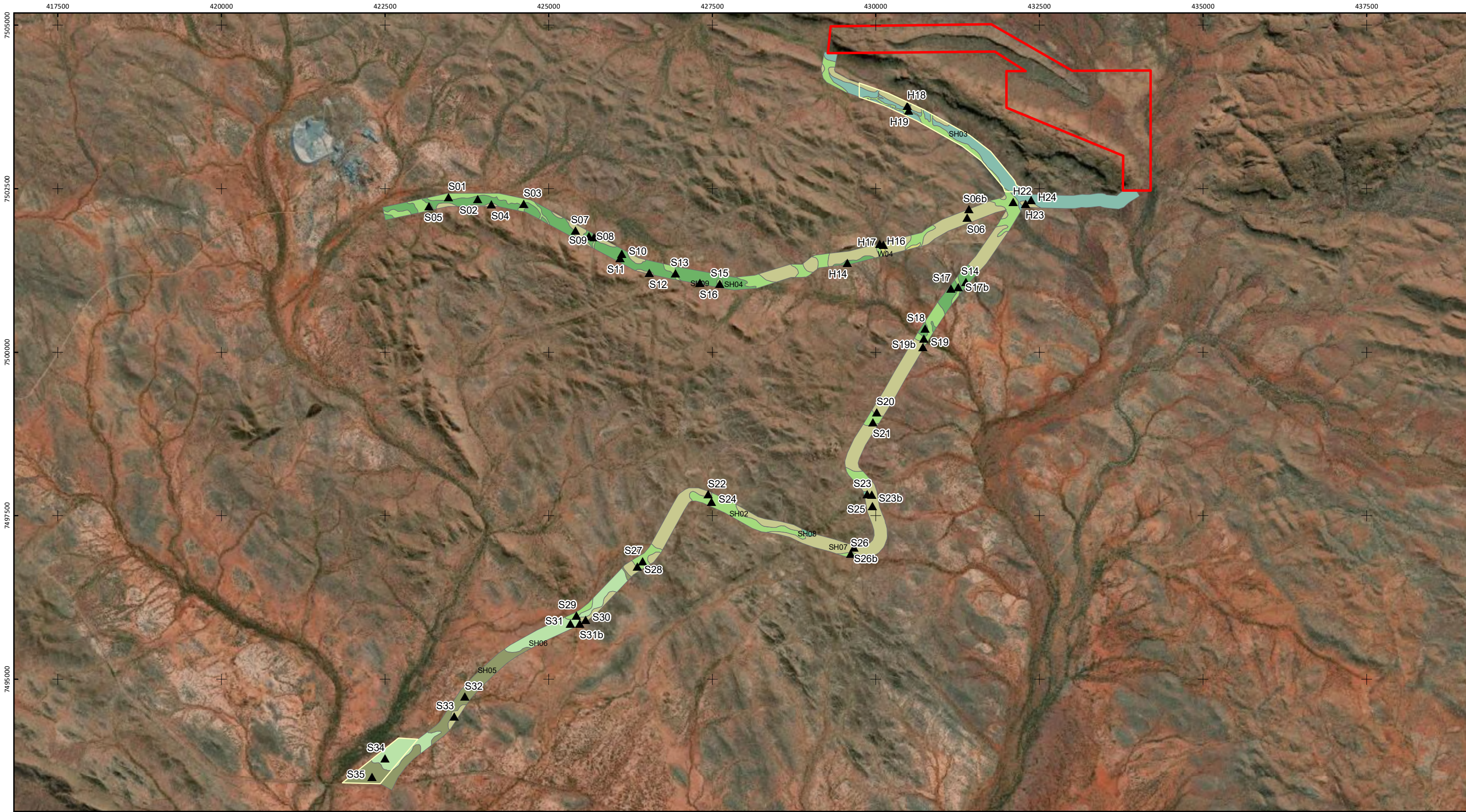


- ▭ Mine-site survey area
- ▭ Haul road survey area
- Priority 1**
- *Triodia* sp. Silvergrass (P.-L. de Kock BES 00808)
- Priority 2**
- *Dicladanthera glabra*
- ▭ *Paspalidium retiglume*
- Priority 3**
- *Cyanthillium gracile*
- ▭ *Eremophila magnifica* subsp. *velutina*
- ▲ *Glycine falcata*
- ◆ *Indigofera* sp. Bungaroo Creek (S. van Leeuwen 4301)
- ◆ *Owenia acidula*
- *Sida* sp. Hamersley Range (K. Newbey 10692)
- ▭ *Solanum* sp. Red Hill (S. van Leeuwen et al. PBS 5415)
- ◆ *Terminalia supranitifolia*
- *Themeda* sp. Hamersley Station (M.E. Trudgen 11431)
- ◆ *Triodia pisoliticola*
- Priority 4**
- *Goodenia nuda*
- ▭ *Ptilotus mollis*
- ▲ *Rhynchosia bungarensis*

Figure 5.6: DBCA Threatened and Priority flora records within 50 km of the Applicaton area.





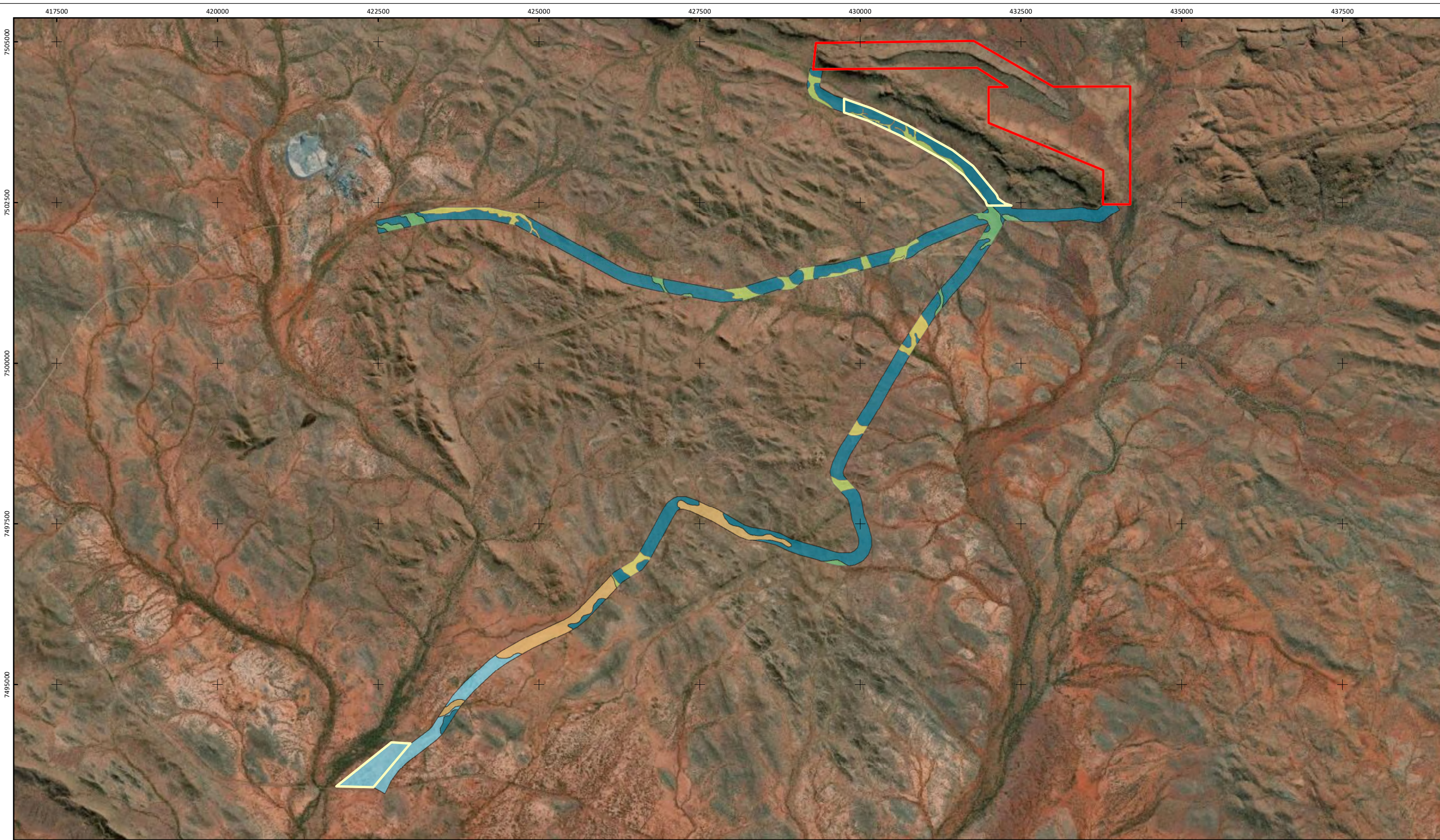
- ▭ Mine-site survey area
- ▭ Haul road survey area
- ▲ Vegetation description site

Vegetation unit

- ▭ SH02: *Acacia* spp. (*A. citrinoviridis*, *A. bivenosa*, *A. synchronica*, *A. trachycarpa*) tall open shrubland; *Triodia epactia*, *T. wiseana*, *Cenchrus ciliaris* low sparse hummock grassland/tussock grassland.
- ▭ SH03: *Acacia* spp. (*A. inaequilatera*, *A. pruinocarpa*, *A. bivenosa*, *A. synchronica*, *A. acradenia*) tall sparse shrubland; *Triodia epactia*, *Triodia wiseana* low sparse hummock grassland.
- ▭ SH04: *Acacia* spp. (*A. synchronica*, *A. xiphophylla*, *A. tetragonophylla*) tall sparse shrubland; *Triodia epactia*, *Triodia wiseana* low sparse hummock grassland.
- ▭ SH05: *Acacia xiphophylla*, *Acacia synchronica* tall sparse shrubland; *Cynodon convergens*, *Dactyloctenium radulans*, *Trianthema triquetrum* low sparse tussock grassland/herbland.
- ▭ SH06: *Acacia synchronica* tall sparse shrubland; *Cynodon convergens*, *Dactyloctenium radulans*, *Trianthema triquetrum* low sparse tussock grassland/herbland.
- ▭ SH07: ±*Corymbia hamersleyana*, ±*Eucalyptus leucophloia* low isolated trees; *Acacia* spp. (*A. bivenosa*, *A. inaequilatera*, *A. pruinocarpa*, *A. synchronica*) tall-mid sparse shrubland; *Triodia wiseana* low sparse hummock g.
- ▭ SH08: *Senna glutinosa* subsp. *glutinosa*, *Senna artemisioides* subsp. *oligophylla* tall/mid sparse shrubland; *Triodia wiseana*, *Eriachne mucronata* low open hummock grassland/tussock grassland.
- ▭ SH09: *Acacia citrinoviridis* tall sparse shrubland; *Eremophila fraseri* subsp. *fraseri* low sparse shrubland; *Triodia wiseana*, *Cenchrus ciliaris* low open hummock grassland/tussock grassland.
- ▭ W04: *Eucalyptus victrix*, *Acacia citrinoviridis* low open woodland/tall sparse shrubland; *Cenchrus ciliaris*, *Cenchrus setiger*, *Triodia wiseana* low sparse tussock grassland/hummock grassland.

Figure 5.2: Vegetation types within the haul road survey area (ecologia 2020).





▭ Mine-site survey area **Vegetation condition**
 Haul road survey area ▭ Excellent
▭ Very Good to Excellent
▭ Very Good
▭ Good to Very Good
▭ Good
▭ Poor

Figure 5.4: Vegetation condition haul road survey area.

