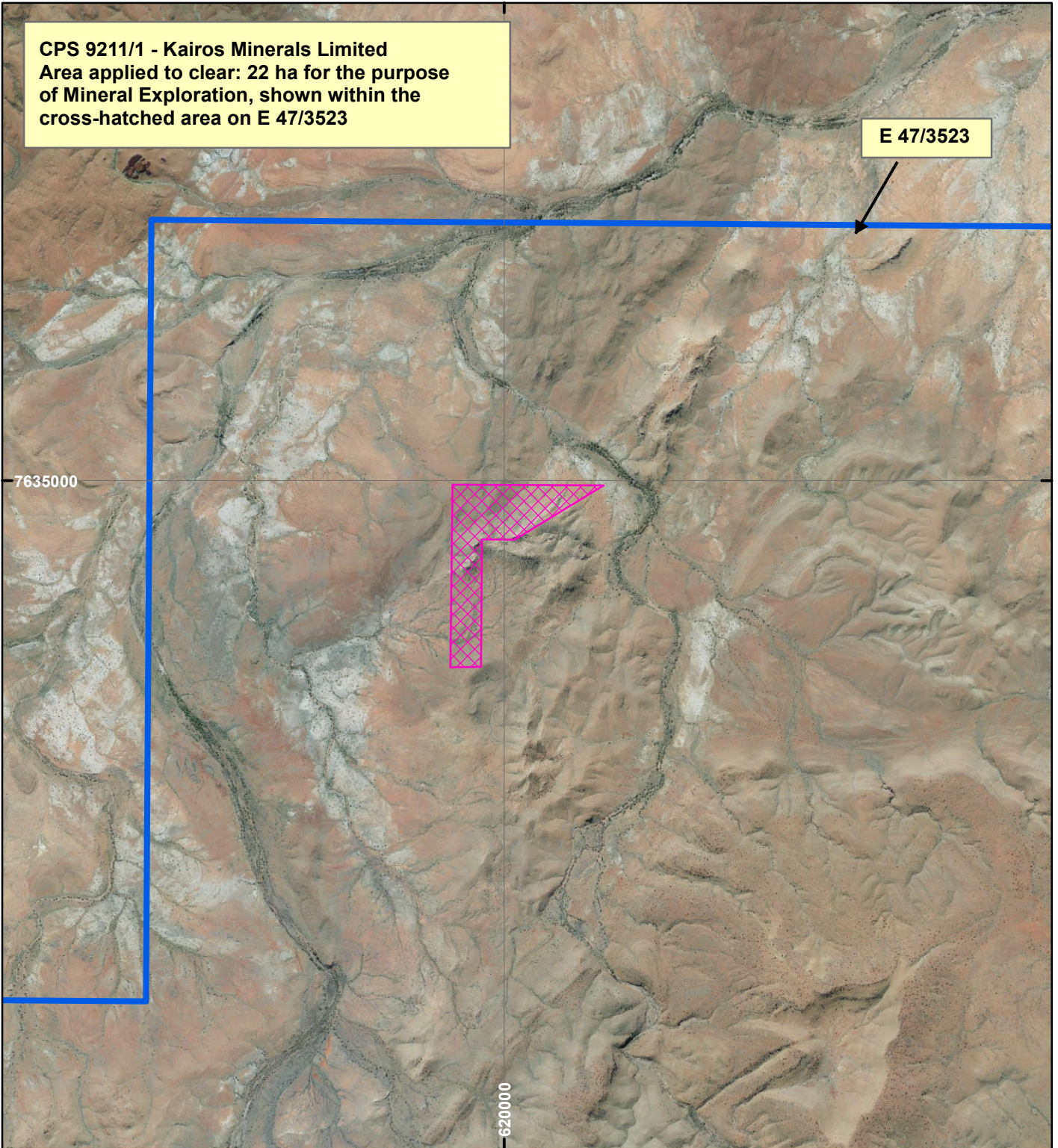


CPS 9211/1 - Kairos Minerals Limited



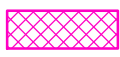

CPS 9211/1 - Kairos Minerals Limited
 Area applied to clear: 22 ha for the purpose
 of Mineral Exploration, shown within the
 cross-hatched area on E 47/3523

E 47/3523

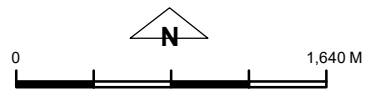
7635000

620000

LEGEND

-  Clearing Instruments
-  Mining Tenements

Orthophotography sourced from Landgate



Scale 1:40,000
 (Approximate when reproduced at A4)
 Geocentric Datum Australia 1994
 Note: the data in this map have not been
 projected. This may result in geometric
 distortion or measurement inaccuracies.

..... Date

Officer with delegated authority under Section 20 of
 the Environmental Protection Act 1986

Information derived from this map should be
 confirmed with the data custodian acknowledged
 by the agency acronym in the legend.

