

CPS 9213/1 - Map E

119°35'31.200"E

119°35'47.400"E

119°36'3.600"E

32°47'13.200"S

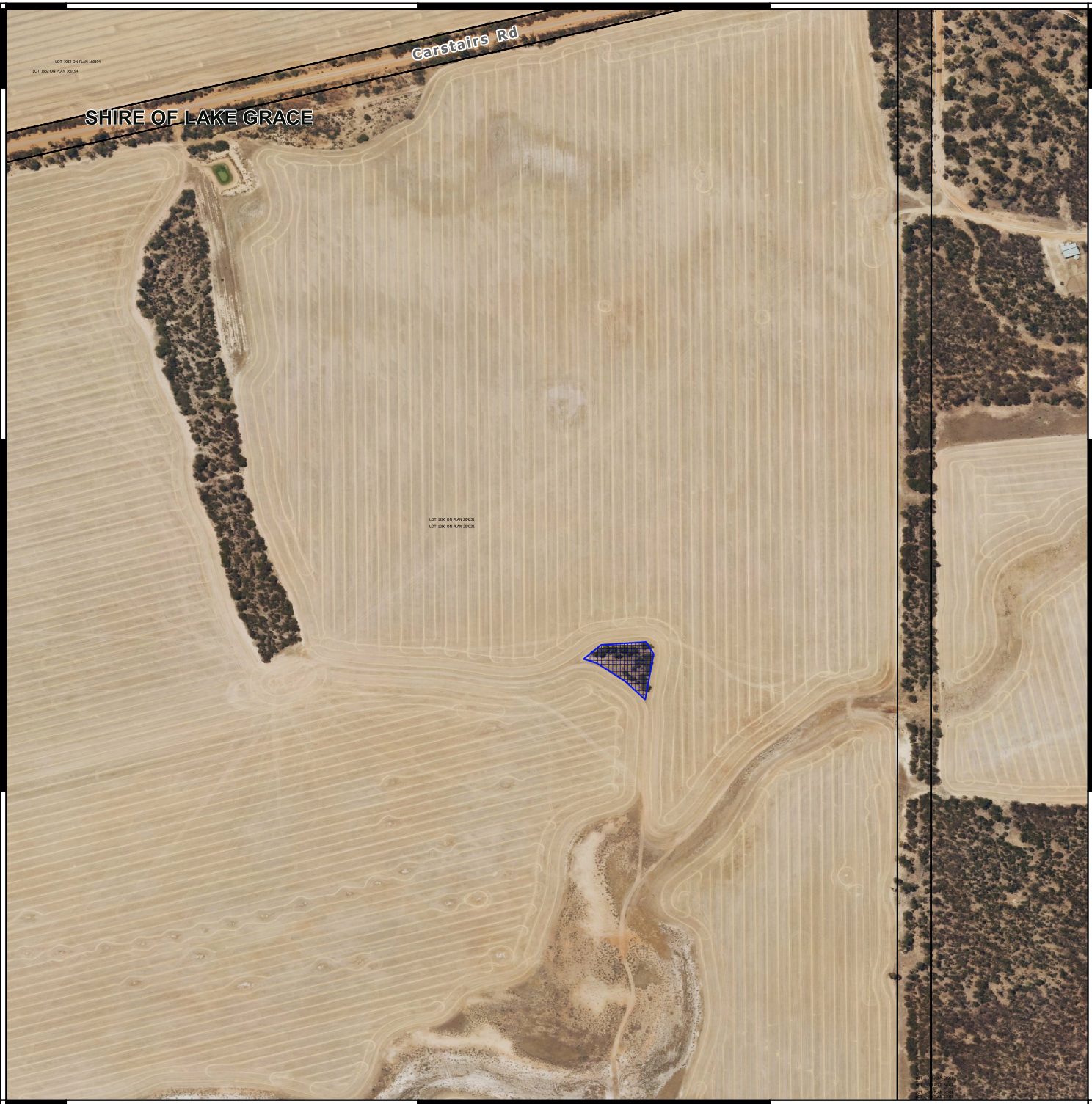
32°47'29.400"S

32°47'45.600"S

32°47'13.200"S

32°47'29.400"S

32°47'45.600"S








119°35'31.200"E

119°35'47.400"E

119°36'3.600"E

Legend

-  Land Tenure
-  CPS 9213-1 Applied to Clear
-  Local Government Authorities
- Road Centrelines
 -  Local Rd - Other
 -  No Classification
- Image



0 100 200 m



1:5000

MGA Zone 50
Geocentric Datum of Australia 1994



**GOVERNMENT OF
WESTERN AUSTRALIA**

Officer delegated under section 20 of the
Environmental Protection Act 1986