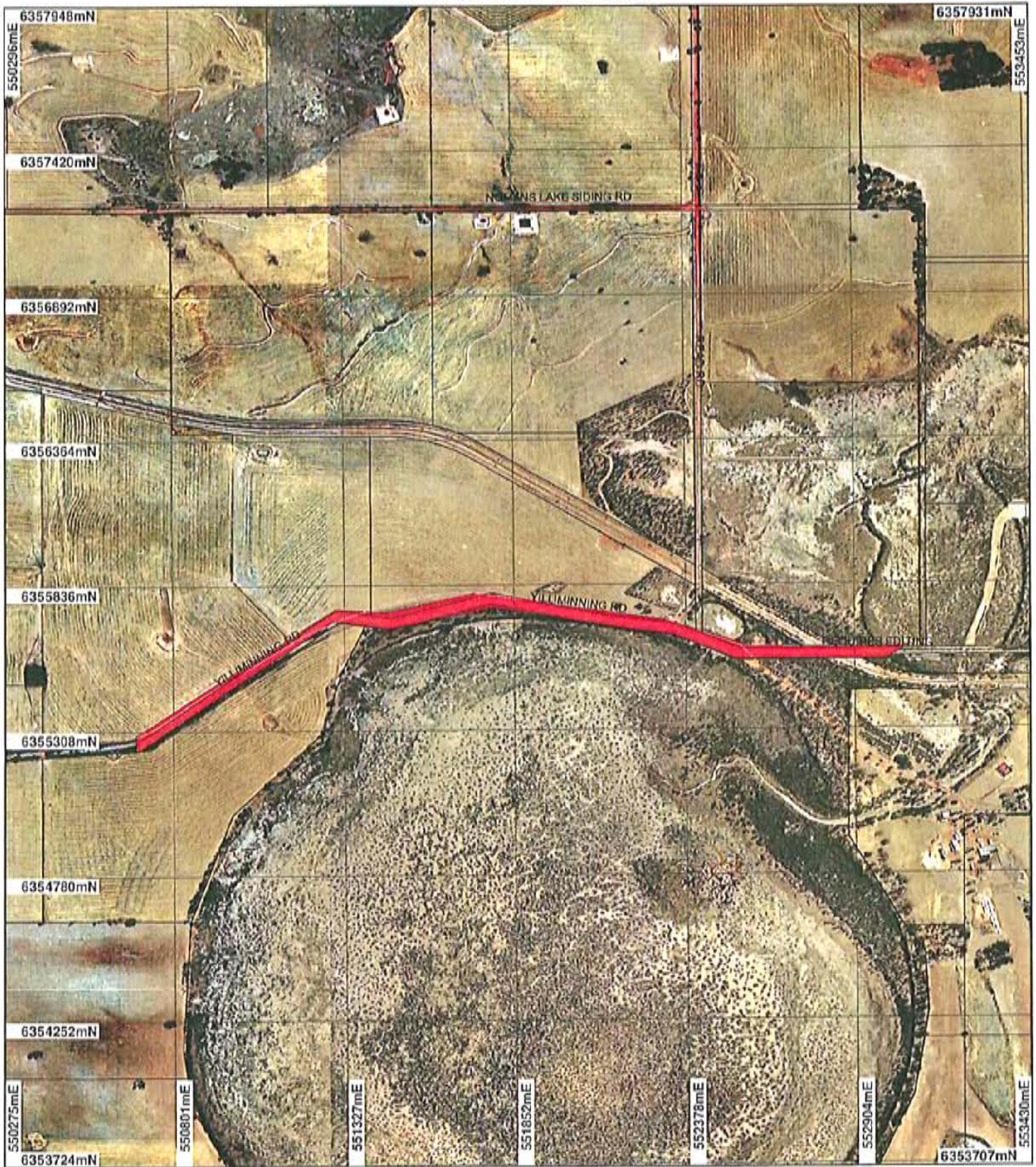
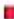

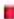


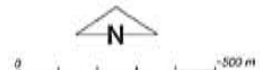


CPS 926/2 a Plan



LEGEND

- | | |
|---|--|
|  Areas Subject to Conditions |  Towns - DLI 8/04 |
|  Areas Approved to Clear | Corrigin South 1.4m |
|  Road Centrelines - DLI 1/5/04 | Orthomosaic - DOLA 00 |
|  Cadastre - DLI | |



Scale 1:18615
(Approximate when reproduced at A1)

Geocentric Datum Australia 1994

Note: The data in this map have not been
checked. This may result in geometric
distortion or measurement inaccuracies.

 Date 20/3/07

Kim Taylor
Officer with delegated authority under Section 20 of
the Environmental Protection Act 1986

Information derived from this map should be
confirmed with the data custodian acknowledged
by the agency acronym in the legend.